

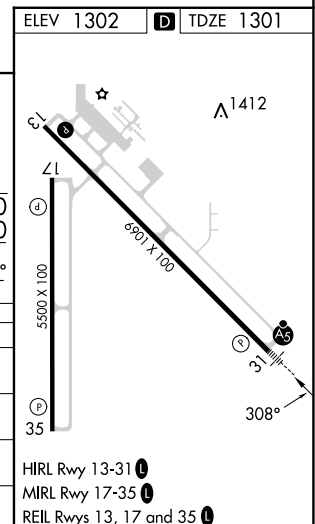
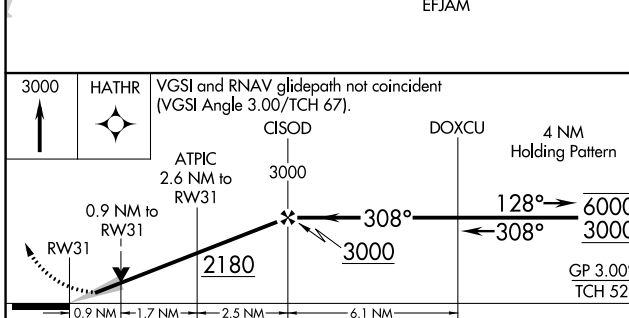
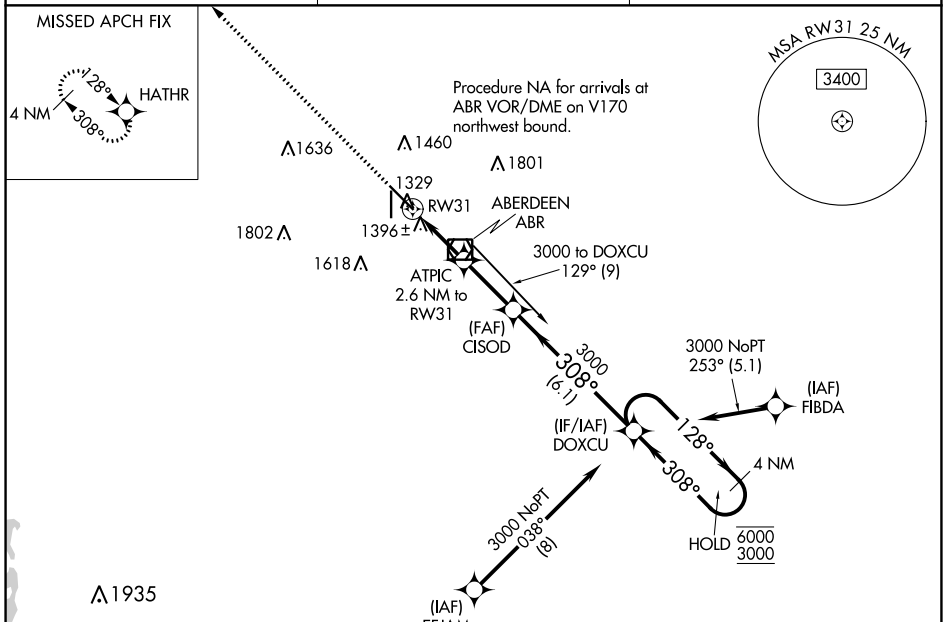
WAAS CH <b>42914</b> <b>W31A</b>	APP CRS <b>308°</b>	Rwy ldg TDZE Apt Elev	<b>6901</b> <b>1301</b> <b>1302</b>
--	------------------------	-----------------------------	---

# RNAV (GPS) RWY 31

ABERDEEN RGNL (ABR)

RNP APCH - GPS.	MALSR	MISSED APPROACH: Climb to 3000 direct HATHR and hold.
⚠ For uncompensated Baro-VNAV systems, LNAV/VNAV NA below -17°C or above 54°C. For inop ALS, increase LNAV/VNAV visibility all Cats to ½ SM and LNAV visibility all Cats to 1 SM.		

ASOS <b>125.875</b>	MINNEAPOLIS CENTER <b>120.6 371.9</b>	UNICOM <b>122.7 (CTAF)</b>
------------------------	--	-------------------------------



CATEGORY	A	B	C	D
LPV DA		1501-½	200 (200-½)	
LNAV/VNAV DA		1599-½	298 (300-½)	
LNAV MDA	1660-½	359 (400-½)	1660-⅝	359 (400-⅝)
CIRCLING	1760-1 458 (500-1)	1860-1 558 (600-1)	1960-1¾ 658 (700-1¾)	2160-2¾ 858 (900-2¾)

NC-1, 05 SEP 2024 to 03 OCT 2024

NC-1, 05 SEP 2024 to 03 OCT 2024