

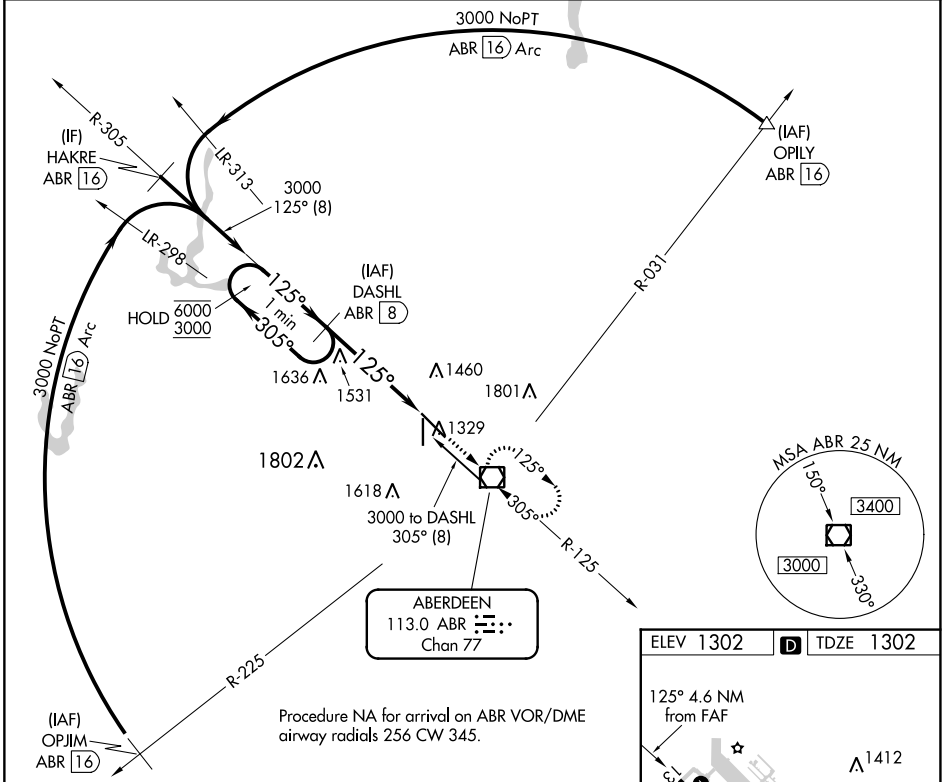
VOR/DME ABR 113.0 Chan 77	APP CRS 125°	Rwy Idg TDZE Apt Elev	6901 1302 1302
---	------------------------	-----------------------------	---

VOR RWY 13

ABERDEEN RGNL (ABR)

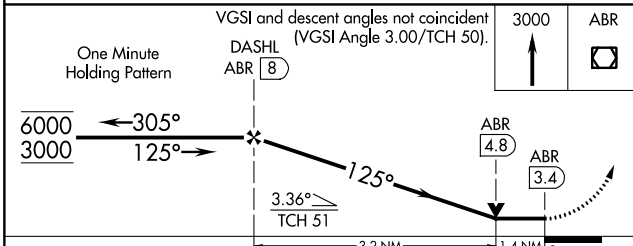
DME required. MISSED APPROACH: Climb to 3000 direct ABR VOR/DME and hold.

ASOS 125.875	MINNEAPOLIS CENTER 120.6 371.9	UNICOM 122.7 (CTAF)
------------------------	--	-------------------------------

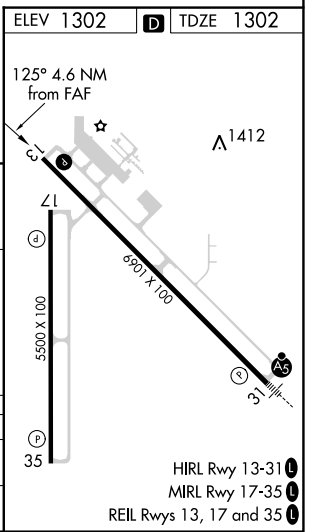


ABERDEEN
113.0 ABR
Chan 77

Procedure NA for arrival on ABR VOR/DME
airway radials 256 CW 345.



CATEGORY	A	B	C	D
S-13	1800-1	498 (500-1)	1800-1 ³ / ₈	498 (500-1 ³ / ₈)
CIRCLING	1800-1 498 (500-1)	1860-1 558 (600-1)	1960-1 ³ / ₄ 658 (700-1 ³ / ₄)	2160-2 ³ / ₄ 858 (900-2 ³ / ₄)



HIRL Rwy 13-31
MIRL Rwy 17-35
REIL Rws 13, 17 and 35

NC-1, 05 SEP 2024 to 03 OCT 2024

NC-1, 05 SEP 2024 to 03 OCT 2024