

WAAS CH 58240 W21A	APP CRS 213°	Rwy Idg TDZE 1194 Apt Elev 1194	5002 1194 1194
--	------------------------	---	---

RNAV (GPS) RWY 21

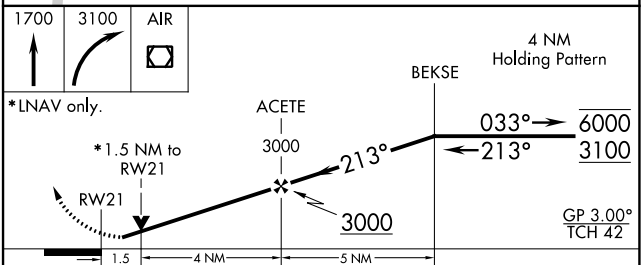
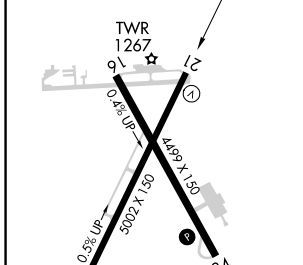
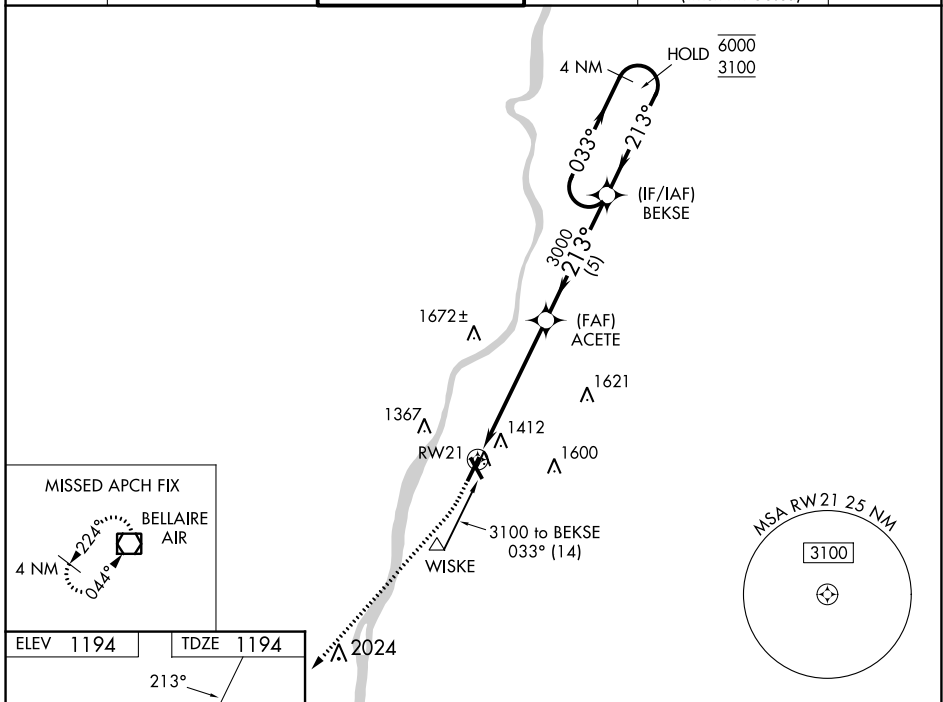
WHEELING OHIO COUNTY (HLG)

RNP APCH.

▼ Rwy 21 helicopter visibility reduction below 3/4 SM NA. For uncompensated Baro-VNAV systems, procedure NA below -17°C or above 54°C.
▲

MISSED APPROACH: Climb to 1700 then climbing right turn to 3100 direct AIR VOR/DME and hold.

ASOS 127.375	PITTSBURGH APP CON 125.275 285.575	WHEELING TOWER * 118.1 (CTAF) 0257.8	GND CON 121.75	CLNC DEL 125.275 (when twr closed)	UNICOM 122.95
------------------------	--	--	--------------------------	---	-------------------------



ELEV 1194	TDZE 1194				
		4 NM Holding Pattern			
* LNAV only.					
RWY 21		ACETE	BEKSE	6000 / 3100	
1.5		4 NM	5 NM	033° / 213°	
CATEGORY	A	B	C	D	
LPV DA	1444/50		250 (300-1)		
LNAV/VNAV DA	1653-1 3/8		459 (500-1 3/8)		
LNAV MDA	1700/55	506 (600-1)		1700-1 3/8 506 (600-1 3/8)	
C CIRCLING	1720-1 526 (600-1)	1740-1 546 (600-1)	1920-2 726 (800-2)	1920-2 1/4 726 (800-2 1/4)	

HIRL Rwy 3-21 **Ⓛ**
MIRL Rwy 16-34 **Ⓛ**
REIL Rwy 21 and 34 **Ⓛ**

NE-4, 05 SEP 2024 to 03 OCT 2024

NE-4, 05 SEP 2024 to 03 OCT 2024