

APP CRS	Rwy Idg	5000
333°	TDZE	999
	Apt Elev	1009

RNAV (GPS) RWY 33

WORCESTER RGNL (ORH)

RNP APCH.

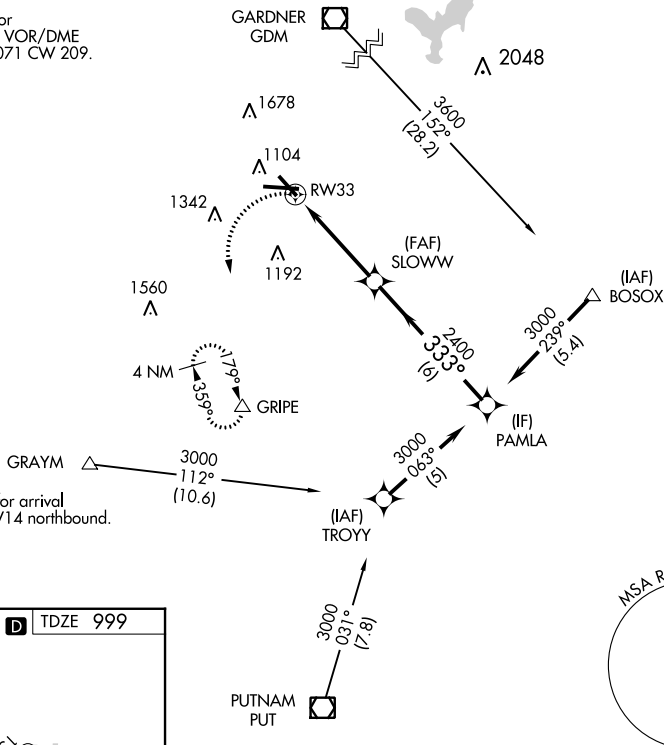
- ▼ When local altimeter setting not received, use Bedford altimeter setting and increase all MDAs 200 feet and visibility LNAV Cat C/D $\frac{5}{8}$ SM and visibility Circling Cat B $\frac{1}{4}$ SM. VDP NA with Bedford altimeter setting.

MISSED APPROACH:
Climbing left turn to 3000
direct GRIPE and hold.

ATIS	BRADLEY APP CON	WORCESTER TOWER★	GND CON	CLNC DEL	CLNC DEL	UNICOM
126.55	119.0 327.1	120.5 (CTAF) 263.0	123.85	128.65	119.0 (When twr closed)	122.95

Procedure NA for arrival on GDM VOR/DME airway radials 071 CW 209.

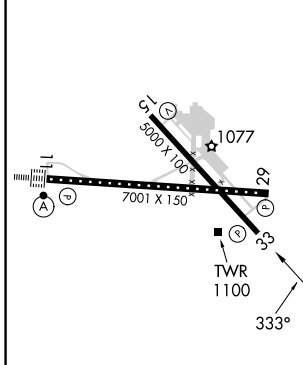
Procedure NA for arrival at GRAYM on V14 northbound.



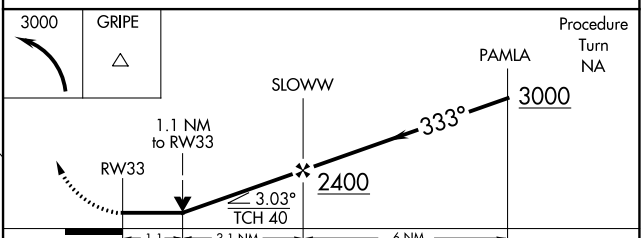
NE-1, 05 SEP 2024 to 03 OCT 2024

NE-1, 05 SEP 2024 to 03 OCT 2024

ELEV 1009	D	TDZE 999
-----------	---	----------



- TDZ/CL Rwy 11
- REIL Rws 15, 29 and 33
- HIRL Rwy 11-29
- MIRL Rwy 15-33



CATEGORY	A	B	C	D
LNAV MDA	1480-1	482 (500-1)	1480 - $1\frac{3}{8}$	482 (500-1 $\frac{3}{8}$)
<input checked="" type="checkbox"/> CIRCLING	1560-1 551 (600-1)	1720-1 711 (800-1)	2000-3 991 (1000-3)	