

APP CRS	Rwy Idg	10000
340°	TDZE	5734
	Apt Elev	5759

RNAV (GPS) RWY 35

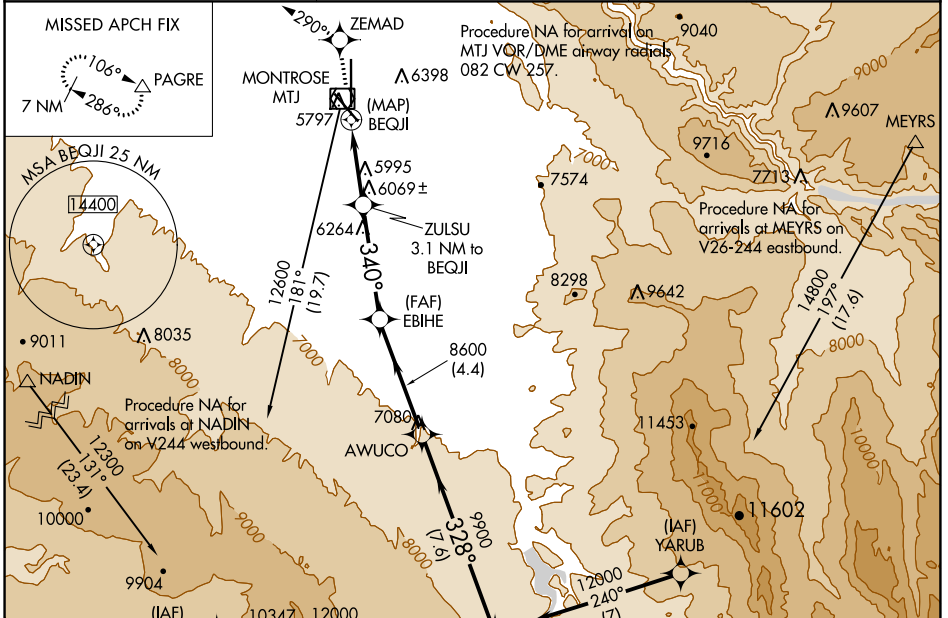
MONTRÖSE RGNL (MTJ)

RNP APCH-GPS.

⚠ When Circling to Rwy 13 at night, operational VGSI required, remain on or above VGSI glidepath until threshold. Circling Rwy 31 NA at night. Rwy 35 helicopter visibility reduction below 3/4 SM NA. Circling NA east of Rwy 17 and northeast of Rwy 31. When local altimeter setting not received, procedure NA.

MISSED APPROACH: Climb to 11000 direct ZEMAD on track 290° to PAGRE and hold, continue climb-in-hold to 11000.

ASOS 135.225	DENVER CENTER 127.1 343.65	UNICOM 122.8 (CTAF)
------------------------	--------------------------------------	-------------------------------

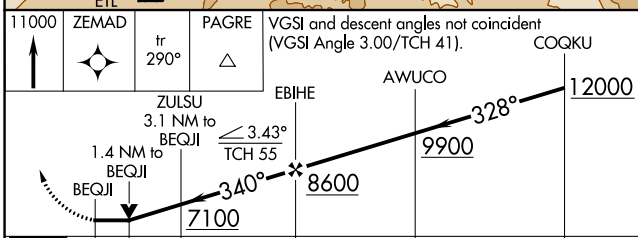


Procedure NA for arrival on MTJ VOR/DME airway radials 082 CW 257.

Procedure NA for arrivals at MEYRS on V26-244 eastbound.

Procedure NA for arrivals at NADIN on V244 westbound!

Procedure NA for arrival on ETL VOR/DME airway radials 019 CW 143.



CATEGORY	A	B	C	D
LNVA MDA	6380-1 646 (700-1)	6380-1 3/4 646 (700-1 3/4)	6380-2 646 (700-2)	6380-2 646 (700-2)
CIRCLING	6380-1 621 (700-1)	6420-1 661 (700-1)	6640-2 3/4 881 (900-2 3/4)	6800-3 1041 (1100-3)

ELEV 5759 **D** TDZE 5734

REIL Rws 31 and 35

HIRL Rws 13-31 and 17-35

The vertical scale diagram shows the altitudes from 5807 to 11000. It includes glide path angles of 0.3% DOWN and 0.3% UP. The diagram also shows the terrain profile and the location of the runway.

SW-1, 05 SEP 2024 to 03 OCT 2024

SW-1, 05 SEP 2024 to 03 OCT 2024