

LOC/DME I-SJC 110.9 Chan 46	APP CRS 306°	Rwy Ldg 7614 TDZE 57 Apt Elev 62
--	------------------------	---

ILS RWY 30L (SA CAT I & II)

NORMAN Y MINETA SAN JOSE INTL (SJC)

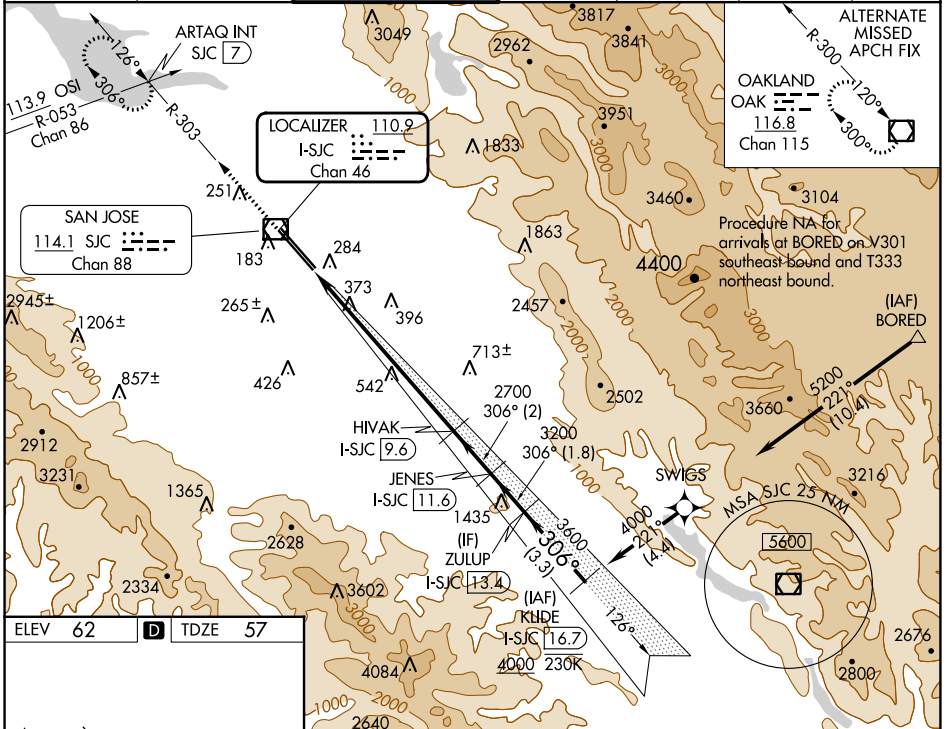
RNAV 1-GPS or RADAR required for procedure entry. DME required.
From BORED: RNAV 1-GPS required.

MALSR

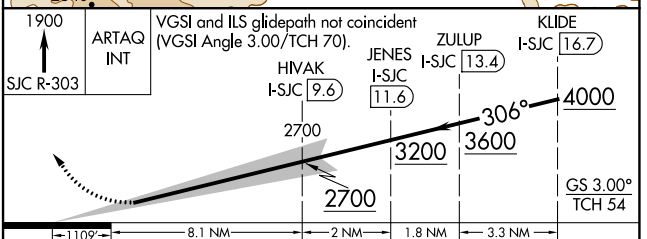
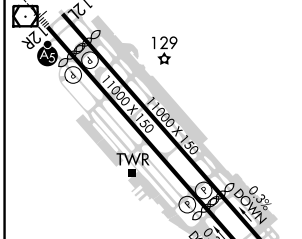
MISSED APPROACH: Climb to 1900 on SJC VOR/DME R-303 to ARTAQ INT/SJC 7 DME and hold.

SA CAT I: Requires specific OPSPEC, MSPEC, or LOA approval and use of HUD to DH.
SA CAT II: Reduced lighting: requires specific OPSPEC, MSPEC, or LOA approval and use of autoland or HUD to touchdown. SA CAT I/II: Procedure NA when tower closed.

D-ATIS 126.95	NORCAL APP CON 120.1 290.25	SAN JOSE TOWER* 124.0 (CTAF) 257.6	GND CON 121.7	CLNC DEL 118.0	CPDLC	UNICOM 122.95
-------------------------	---------------------------------------	--	-------------------------	--------------------------	-------	-------------------------



ELEV 62	D	TDZE 57
---------	----------	---------



CATEGORY	A	B	C	D
S-ILS 30L	SA CAT I	RA 147/14	150 DA 207	
S-ILS 30L	SA CAT II	RA 97/12	100 DA 157	

SA CATEGORY I & II ILS - SPECIAL AIRCREW AND AIRCRAFT CERTIFICATION REQUIRED

SW-2, 05 SEP 2024 to 03 OCT 2024