

LOC/DME I-SJC 110.9 Chan 46	APP CRS 306°	Rwy ldg 7614	30L 7597	30R 57	55 62
		TDZE 57			
		Apt Elev 62			

ILS or LOC RWY 30L

NORMAN Y MINETA SAN JOSE INTL (SJC)

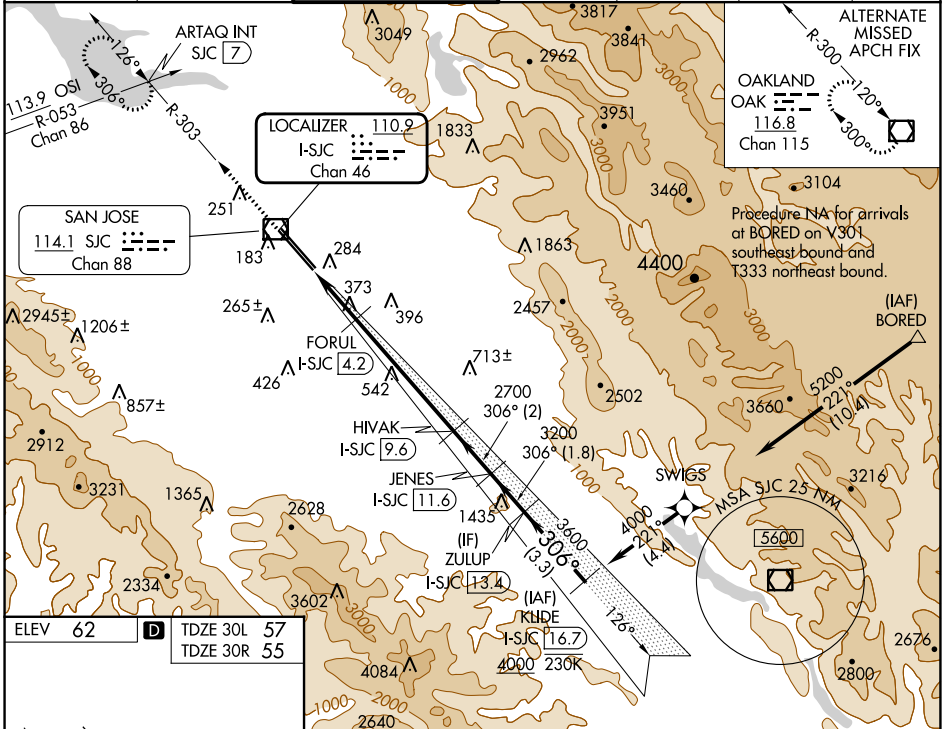
RNAV 1-GPS or RADAR required for procedure entry. DME required.
From BORED: RNAV 1-GPS required.

MALSR
Rwy 30L

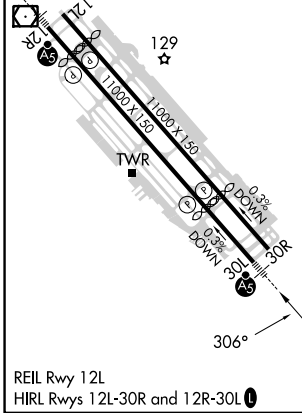
MISSED APPROACH: Climb to 1900 on SJC
VOR/DME R-303 to ARTAQ INT/SJC 7 DME
and hold.

RVR 1800 authorized with use of FD or AP or HUD to DA.

D-ATIS 126.95	NORCAL APP CON 120.1 290.25	SAN JOSE TOWER* 124.0 (CTAF) 257.6	GND CON 121.7	CLNC DEL 118.0	CPDLC	UNICOM 122.95
-------------------------	---------------------------------------	--	-------------------------	--------------------------	-------	-------------------------



ELEV 62	TDZE 30L 57	TDZE 30R 55
---------	-------------	-------------



1900	ARTAQ INT	VGS1 and ILS glidepath not coincident (VGS1 Angle 3.00/TCH 70).				KLIIDE
SJC R-303	FORUL	HIAK	ZULUP	I-SJC 13.4		I-SJC 16.7
*LOC only	I-SJC 4.2	I-SJC 9.6	I-SJC 11.6	I-SJC 13.4		4000
	I-SJC 1.4	I-SJC 3	2700	3200	3600	GS 3.00° TCH 54
	1.6 NM	1.2 NM	5.3 NM	2 NM	1.8 NM	3.3 NM

CATEGORY	A	B	C	D
S-ILS 30L #	257/24 200 (200-1/2)			
S-LOC 30L	640/24	583 (600-1/2)	640-1 1/4	583 (600-1 1/4)
SIDESTEP 30R	640-1	585 (600-1)	640-1 3/4	585 (600-2)

SW-2, 05 SEP 2024 to 03 OCT 2024

SW-2, 05 SEP 2024 to 03 OCT 2024