

APP CRS <b>126°</b>	Rwy Idg TDZE Apt Elev	<b>8831</b> <b>44</b> <b>62</b>
------------------------	-----------------------------	---------------------------------------

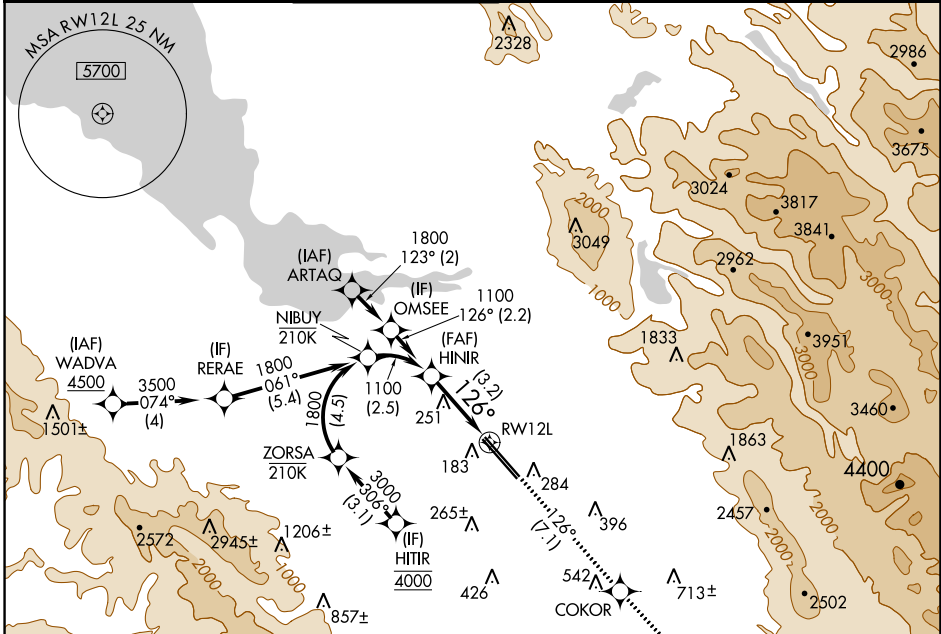
# RNAV (RNP) Z RWY 12L

NORMAN Y MINETA SAN JOSE INTL (SJC)

RNP AR APCH-GPS.  
 For uncompensated Baro-VNAV systems, procedure NA below 0°C or above 54°C.

MISSED APPROACH: Climb to 4600 on track 126° to COKOR and track 124° to GILRO and hold.

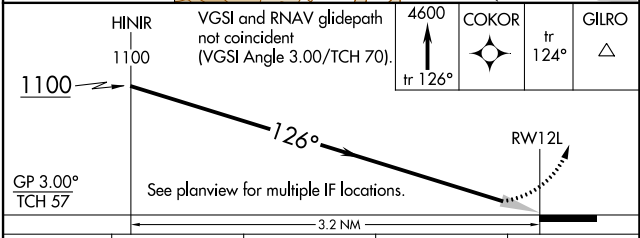
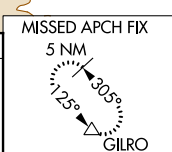
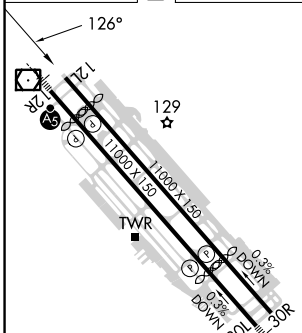
D-ATIS <b>126.95</b>	NORCAL APP CON <b>120.1 290.25</b>	SAN JOSE TOWER* <b>124.0 (CTAF) 257.6</b>	GND CON <b>121.7</b>	CLNC DEL <b>118.0</b>	CPDLC	UNICOM <b>122.95</b>
-------------------------	---------------------------------------	--	-------------------------	--------------------------	-------	-------------------------



SW-2, 05 SEP 2024 to 03 OCT 2024

SW-2, 05 SEP 2024 to 03 OCT 2024

ELEV 62	<b>D</b>	TDZE 44
---------	----------	---------



CATEGORY	A	B	C	D
RNP 0.18 DA		400-1	356 (400-1)	
RNP 0.30 DA		451-1 1/8	407 (400-1 1/8)	

REIL Rwy 12L  
 HIRL Rwy 12L-30R and 12R-30L

## AUTHORIZATION REQUIRED