

APP CRS	Rwy ldg	<b>8587</b>
<b>126°</b>	TDZE	<b>46</b>
	Apt Elev	<b>62</b>

# RNAV (RNP) Z RWY 12R

NORMAN Y MINETA SAN JOSE INTL (SJC)

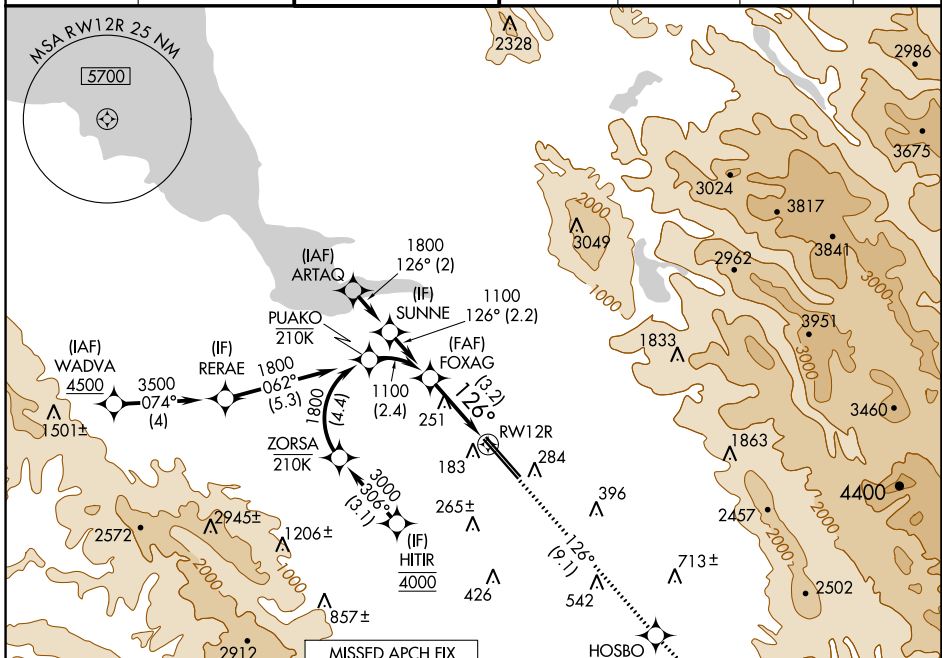
RNP AR APCH-GPS.

▼ For uncompensated Baro-VNAV systems, procedure NA below 0°C or above 54°C. For inop ALS, increase RNP 0.15 all Cats visibility to RVR 5500.



MISSED APPROACH: Climb to 4600 on track 126° to HOSBO and track 124° to GILRO and hold.

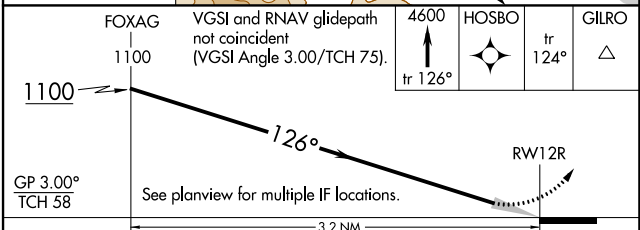
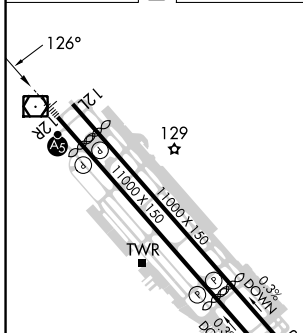
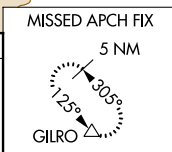
D-ATIS <b>126.95</b>	NORCAL APP CON <b>120.1 290.25</b>	SAN JOSE TOWER* <b>124.0 (CTAF) 257.6</b>	GND CON <b>121.7</b>	CLNC DEL <b>118.0</b>	CPDLC	UNICOM <b>122.95</b>
-------------------------	---------------------------------------	--	-------------------------	--------------------------	-------	-------------------------



SW-2, 05 SEP 2024 to 03 OCT 2024

SW-2, 05 SEP 2024 to 03 OCT 2024

ELEV	62	TDZE	46
------	----	------	----



CATEGORY	A	B	C	D
RNP 0.15 DA		394/30	348 (400- <sup>3</sup> / <sub>4</sub> )	
RNP 0.30 DA		486/40	440 (500- <sup>3</sup> / <sub>4</sub> )	

**AUTHORIZATION REQUIRED**