

WAAS CH 90106 W12A	APP CRS 126°	Rwy ldg TDZE Apt Elev	12R 8587 46 62	12L 8831 44 62
----------------------------------------	------------------------	-----------------------------	----------------------------------------------	----------------------------------------------

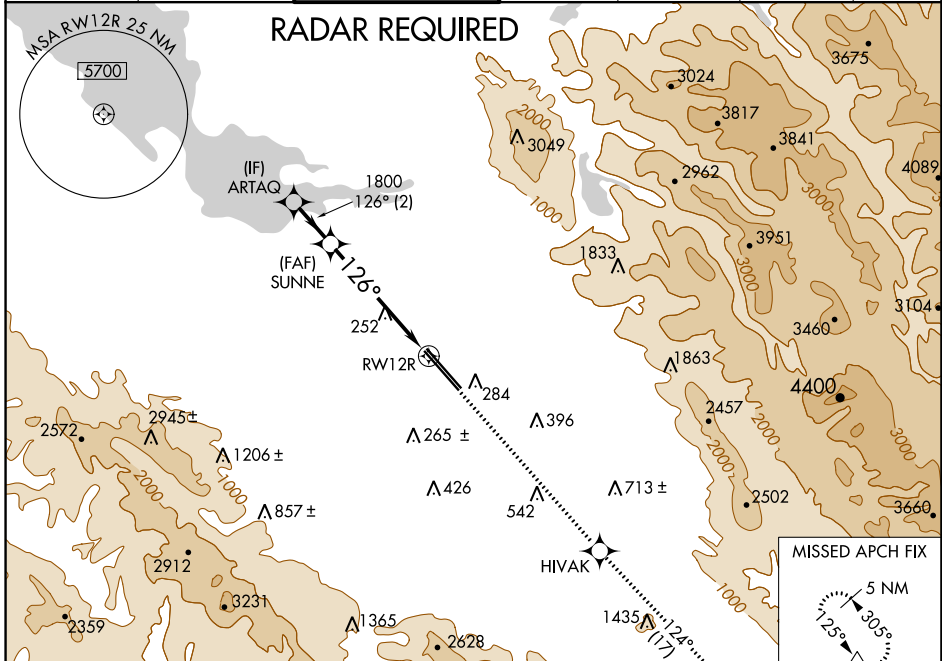
RNAV (GPS) Y RWY 12R

NORMAN Y MINETA SAN JOSE INTL (SJC)

For uncompensated Baro-VNAV systems, LNAV/VNAV NA below -1°C (31°F) or above 54°C (130°F). DME/DME RNP-0.3 NA. For inoperative MALS, increase LNAV/VNAV all Cats visibility to 1 mile and LNAV Cats C/D visibility to 1½ mile.

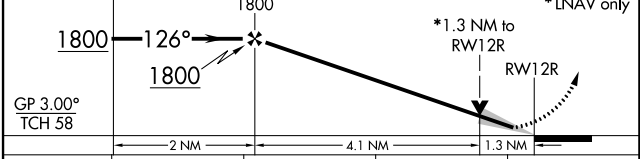
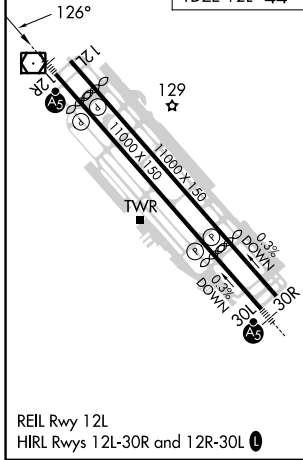
MALS Rwy 12R
MISSED APPROACH: Climb to 4600 direct HIVAK and on track 124° to GILRO and hold.

D-ATIS 126.95	NORCAL APP CON 120.1 290.25	SAN JOSE TOWER ★ 124.0 (CTAF) 0 257.6	GND CON 121.7	CLNC DEL 118.0	CPDLC	UNICOM 122.95
-------------------------	---------------------------------------	-------------------------------------------------	-------------------------	--------------------------	-------	-------------------------



ELEV 62	TDZE 12R 46	TDZE 12L 44
---------	-------------	-------------

VGSI and RNAV glidepath not coincident (VGSI Angle 3.00/TCH 75).



CATEGORY	A	B	C	D
LPV DA	246-½		200 (200-½)	
LNAV/VNAV DA	371-⅝ 325 (400-⅝)		371-1 325 (400-1)	
LNAV MDA	520-½ 474 (500-½)		520-1 474 (500-1)	
SIDESTEP 12L	520-1 476 (500-1)		520-1½ 476 (500-1½) 520-2 476 (500-2)	

SW-2, 05 SEP 2024 to 03 OCT 2024

SW-2, 05 SEP 2024 to 03 OCT 2024