

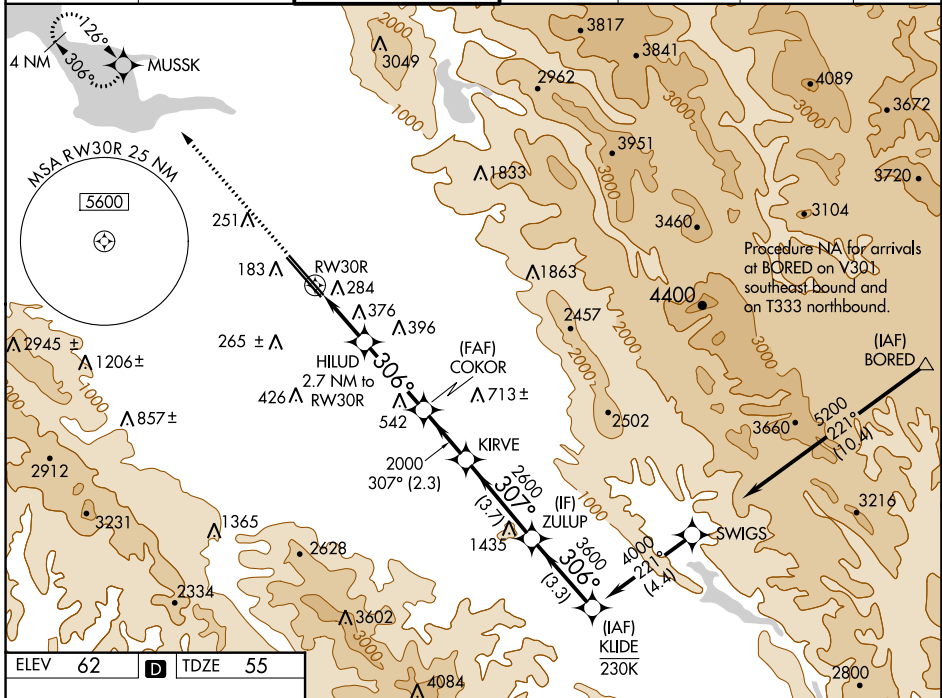
WAAS CH 72901 W30B	APP CRS 306°	Rwy Idg TDZE Apt Elev	7597 55 62
--	------------------------	-----------------------------	---------------------------------------

RNAV (GPS) Y RWY 30R

NORMAN Y MINETA SAN JOSE INTL (SJC)

RNP APCH-GPS.		MISSED APPROACH: Climb to 2300 direct MUSSK and hold.			
⚠ For uncompensated Baro-VNAV systems, LNAV/VNAV NA below -1°C or above 54°C.					

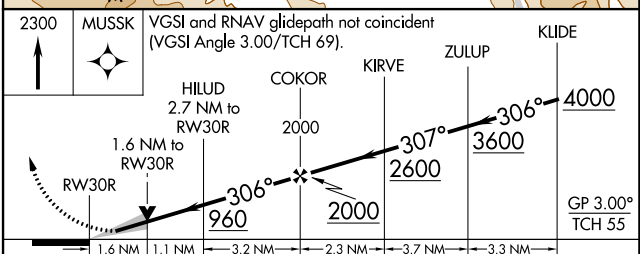
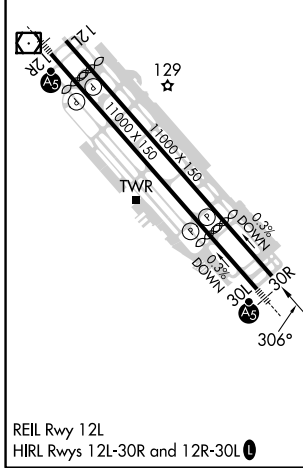
D-ATIS 126.95	NORCAL APP CON 120.1 290.25	SAN JOSE TOWER ★ 124.0 (CTAF) 257.6	GND CON 121.7	CLNC DEL 118.0	CPDLC	UNICOM 122.95
-------------------------	---------------------------------------	---	-------------------------	--------------------------	-------	-------------------------



SW-2, 05 SEP 2024 to 03 OCT 2024

SW-2, 05 SEP 2024 to 03 OCT 2024

ELEV 62	D	TDZE 55
---------	----------	---------



CATEGORY	A	B	C	D
LPV DA		255- ³ / ₄	200 (200- ³ / ₄)	
LNAV/VNAV DA		541-1 ³ / ₈	486 (500-1 ³ / ₈)	
LNAV MDA	640-1	585 (600-1)	640- ³ / ₄	585 (600-1 ³ / ₄)
C CIRCLING	640-1 578 (600-1)	700-1 638 (700-1)	700- ³ / ₄ 638 (700- ³ / ₄)	700-2 638 (700-2)