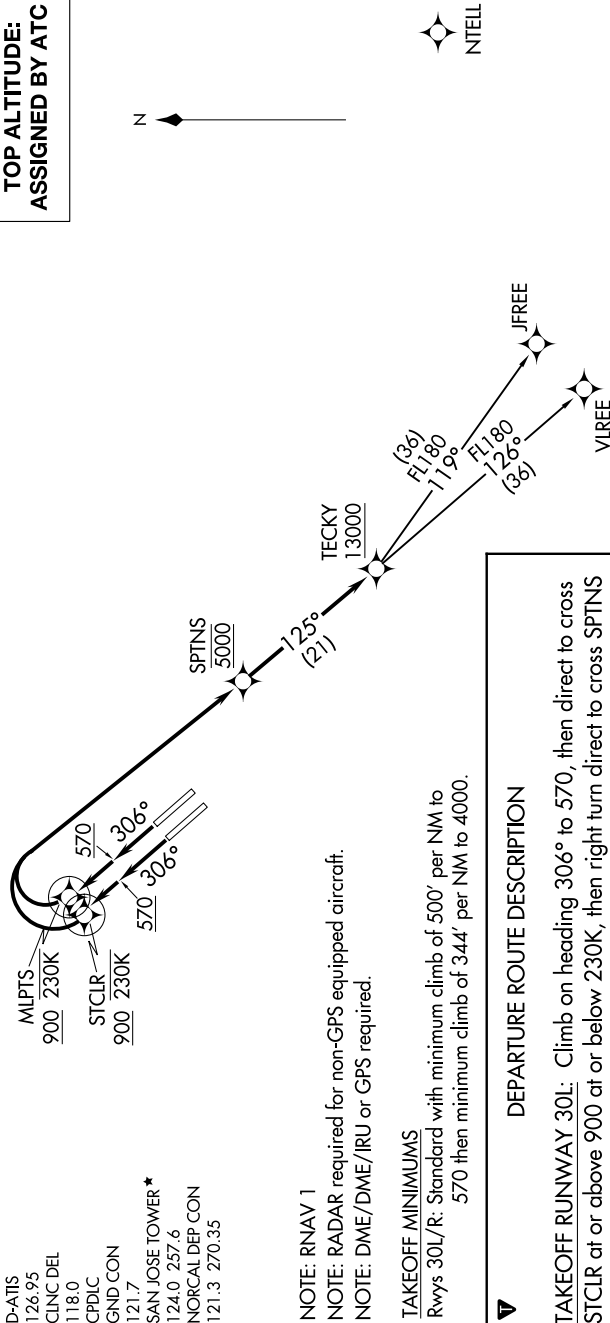


SPTNS ONE DEPARTURE (RNAV)

SW-2, 05 SEP 2024 to 03 OCT 2024



D-ATIS 126.95
CLNC DEL 118.0
CPDLC 121.7
GND CON 121.3
SAN JOSE TOWER* 124.0 257.6
NORCAL DEP CON 121.3 270.35

NOTE: RNAV 1
NOTE: RADAR required for non-GPS equipped aircraft.
NOTE: DME/DME/IRU or GPS required.

TAKEOFF MINIMUMS
Rwys 30L/R: Standard with minimum climb of 500' per NM to 570 then minimum climb of 344' per NM to 4000.

DEPARTURE ROUTE DESCRIPTION

TAKEOFF RUNWAY 30L: Climb on heading 306° to 570, then direct to cross STCLR at or above 900 at or below 230K, then right turn direct to cross SPTNS at 5000, then on track 125° to cross TECKY at or above 13000, thence. . . .

TAKEOFF RUNWAY 30R: Climb on heading 306° to 570, then direct to cross MLPTS at or above 900 at or below 230K, then right turn direct to cross SPTNS at 5000, then on track 125° to cross TECKY at or above 13000, thence. . . .

. . . . (on transition), maintain ATC assigned altitude. Expect filed altitude 10 minutes after departure.

JFREE TRANSITION (SPTNS1..JFREE)
VLIREE TRANSITION (SPTNS1..VLIREE)

TOP ALTITUDE:
ASSIGNED BY ATC



NOTE: Chart not to scale.

SW-2, 05 SEP 2024 to 03 OCT 2024