

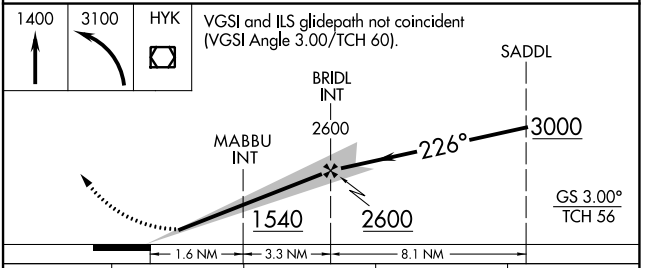
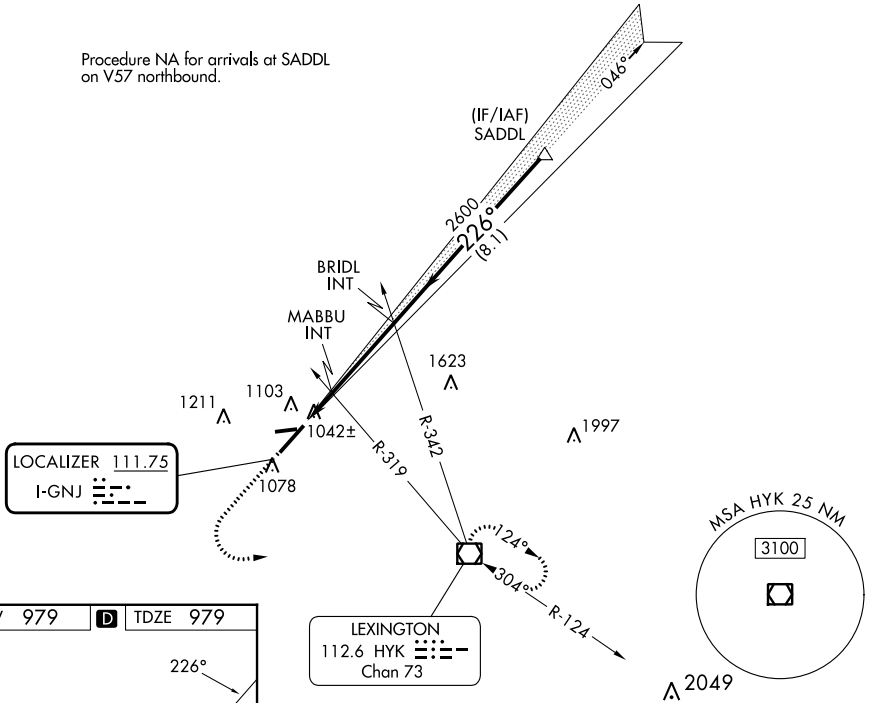
LOC I-GNJ 111.75	APP CRS 226°	Rwy Idg TDZE Apt Elev	6604 979 979
----------------------------	------------------------	-----------------------------	---

ILS or LOC RWY 22

BLUE GRASS (LEX)

<p>⚠ When local altimeter setting not received, use Frankfort altimeter setting: increase S-ILS 22 DA to 1241 feet and all visibilities $\frac{1}{8}$ SM; increase all MDAs 80 feet and visibility Cats C and D $\frac{1}{4}$ SM.</p> <p>⚠ MISSED APPROACH: Climb to 1400 then climbing left turn to 3100 direct HYK VOR/DME and hold, continue climb-in-hold to 3100.</p>				
ATIS 126.3	LEXINGTON APP CON 120.15 259.3 (040°-220°) 120.75 298.9 (221°-039°)	LEXINGTON TOWER 119.1 257.8	GND CON 121.9	CLNC DEL 132.35

Procedure NA for arrivals at SADDL on V57 northbound.



CATEGORY	A	B	C	D
S-ILS 22	1179- $\frac{3}{4}$ 200 (200- $\frac{3}{4}$)			
S-LOC 22	1360-1	381 (400-1)	1360-1 $\frac{1}{8}$	381 (400-1 $\frac{1}{8}$)
C CIRCLING	1420-1 441 (500-1)	1440-1 461 (500-1)	1520-1 $\frac{1}{2}$ 541 (600-1 $\frac{1}{2}$)	1600-2 621 (700-2)

TDZ/CL Rwy 4
REIL Rwys 9, 22 and 27
HIRL Rwy 4-22
MIRL Rwy 9-27

FAF to MAP 4.9 NM

Knots	60	90	120	150	180
Min:Sec	4:54	3:16	2:27	1:58	1:38

SE-1, 05 SEP 2024 to 03 OCT 2024

SE-1, 05 SEP 2024 to 03 OCT 2024