

WAAS CH 70401 W04A	APP CRS 046°	Rwy Idg TDZE Apt Elev	6604 969 979
--	------------------------	-----------------------------	---


RNAV (GPS) RWY 4

BLUE GRASS (LEX)

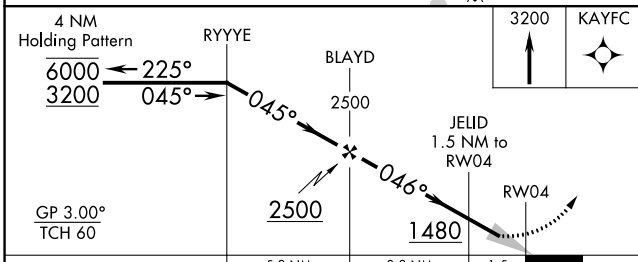
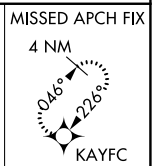
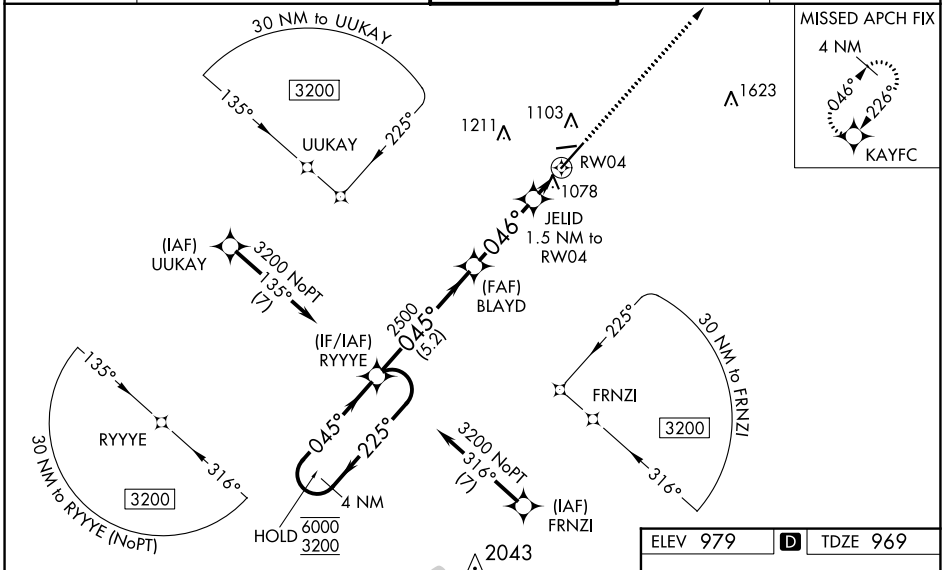
RNP APCH - GPS.

▼ For uncompensated Baro-VNAV systems, LNAV/VNAV NA below -16°C or above 54°C. For inop ALS, increase LNAV/VNAV all Cats visibility to RVR 5500, and LNAV Cats C and D visibility to RVR 5500. When local altimeter setting not received, use Frankfort altimeter setting; increase LPV DA to 1231 feet and all visibilities to RVR 2000; increase LNAV/VNAV DA to 1420 feet and all visibilities to RVR 4000; increase all MDAs 80 feet and LNAV visibility Cat C/D to RVR 4500 and Circling visibility Cat C/D ¼ SM. Baro-VNAV NA when using Frankfort altimeter setting.

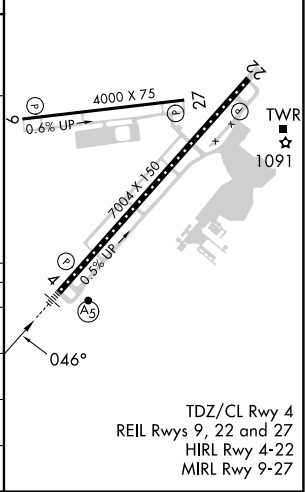
▲ MISSED APPROACH: Climb to 3200 direct KAYFC and hold, continue climb-in-hold to 3200.

MALSR 

ATIS 126.3	LEXINGTON APP CON 120.15 259.3 (040°-220°) 120.75 298.9 (221°-039°)	LEXINGTON TOWER 119.1 257.8	GND CON 121.9	CLNC DEL 132.35
----------------------	---	---------------------------------------	-------------------------	---------------------------



ELEV 979	D	TDZE 969
----------	----------	----------



CATEGORY	A	B	C	D
LPV DA		1169/18	200 (200-½)	
LNAV/VNAV DA		1340/35	371 (400-¾)	
LNAV MDA	1340/24	371 (400-½)	1340/35	371 (400-¾)
C CIRCLING	1420-1 441 (500-1)	1440-1 461 (500-1)	1520-1½ 541 (600-1½)	1600-2 621 (700-2)

TDZ/CL Rwy 4
 REIL Rwys 9, 22 and 27
 HIRL Rwy 4-22
 MIRL Rwy 9-27

SE-1, 05 SEP 2024 to 03 OCT 2024

SE-1, 05 SEP 2024 to 03 OCT 2024