

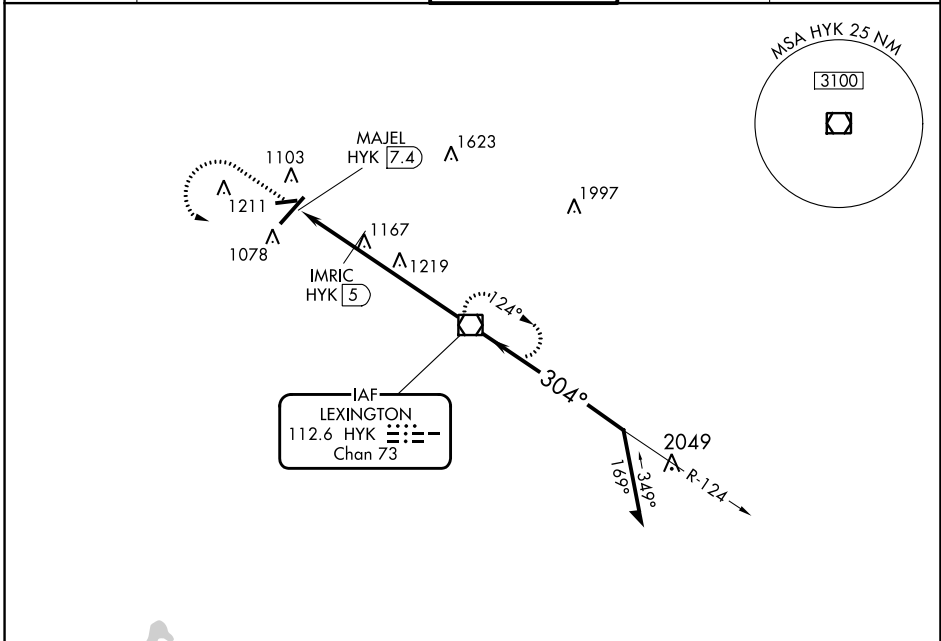
VOR/DME HYK <b>112.6</b> Chan <b>73</b>	APP CRS <b>304°</b>	Rwy Idg TDZE Apt Elev <b>N/A</b> <b>N/A</b> <b>979</b>
---	------------------------	--

**VOR-A**  
BLUE GRASS (LEX)

**▼** When local altimeter setting not received, use Frankfort altimeter setting and increase all MDAs 80 feet and visibility Cats C and D ¼ SM.

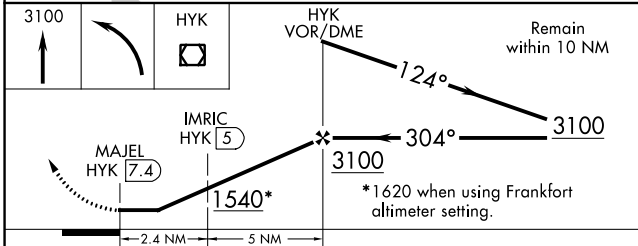
**MISSED APPROACH:** Climb to 3100 then left turn direct HYK VOR/DME and hold.

ATIS <b>126.3</b>	LEXINGTON APP CON <b>120.15 259.3</b> <b>120.75 298.9</b> (040°-220°) (221°-039°)	LEXINGTON TOWER <b>119.1 257.8</b>	GND CON <b>121.9</b>	CLNC DEL <b>132.35</b>
----------------------	--	---------------------------------------	-------------------------	---------------------------

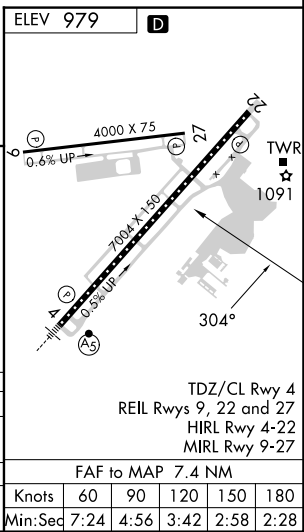


SE-1, 05 SEP 2024 to 03 OCT 2024

SE-1, 05 SEP 2024 to 03 OCT 2024



CATEGORY	A	B	C	D
<b>C</b> CIRCLING	1540-1	561 (600-1)	1540-1½ 561 (600-1½)	1600-2 621 (700-2)
IMRIC DME FIX MINIMUMS				
<b>C</b> CIRCLING	1460-1	481 (500-1)	1520-1½ 541 (600-1½)	1600-2 621 (700-2)



TDZ/CL Rwy 4  
REIL Rwys 9, 22 and 27  
HIRL Rwy 4-22  
MIRL Rwy 9-27

		FAF to MAP 7.4 NM				
Knots	60	90	120	150	180	
Min:Seq	7:24	4:56	3:42	2:58	2:28	