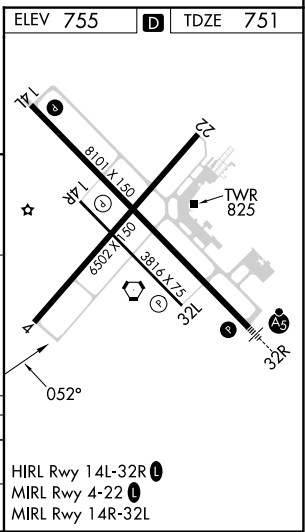
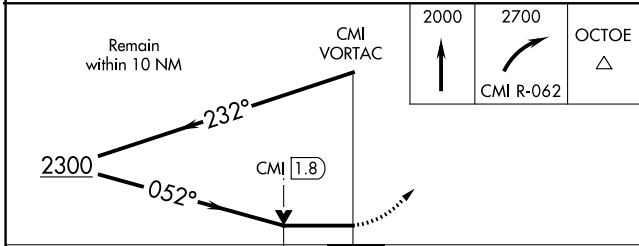
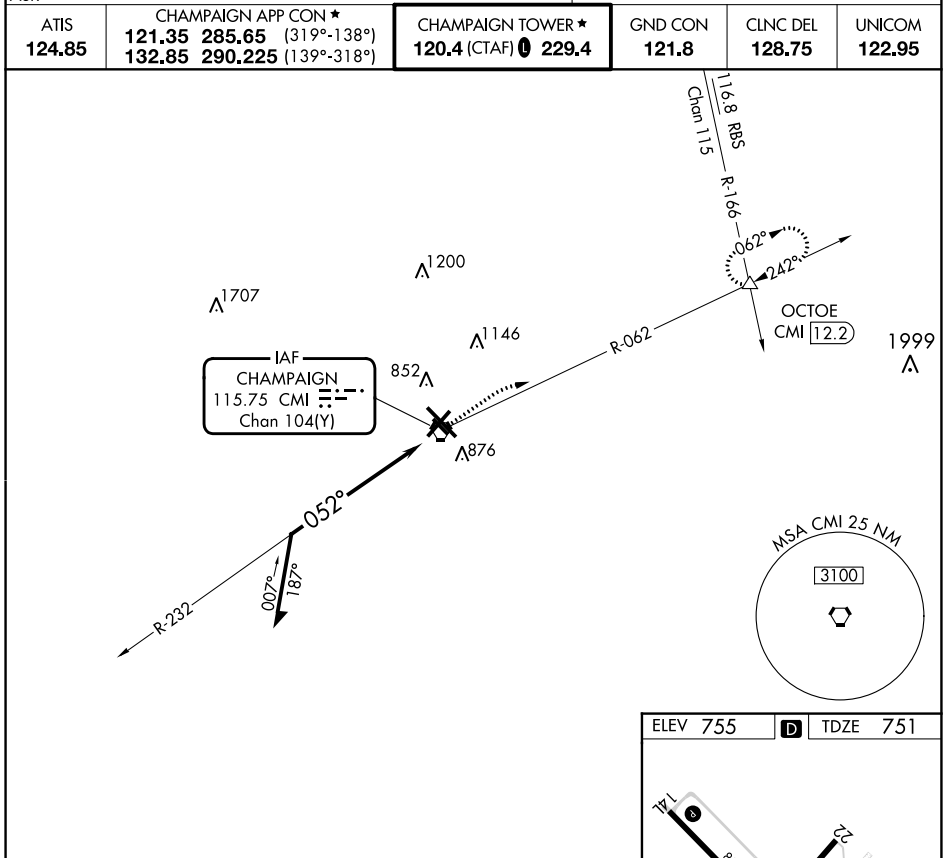


| | | | |
|--------------|---------|----------|------|
| VORTAC CMI | APP CRS | Rwy Idg | 6502 |
| 115.75 | 052° | TDZE | 751 |
| Chan 104 (Y) | | Apt Elev | 755 |

VOR RWY 4

UNIVERSITY OF ILLINOIS/WILLARD (CMI)

| | | | | | |
|------------|---|--|--|-------------------------|---------------------------|
| <p>ASR</p> | MISSED APPROACH: Climb to 2000 then climbing right turn to 2700 on CMI VORTAC R-062 to OCTOE INT/CMI 12.2 DME and hold. | | | | |
| | ATIS 124.85 | CHAMPAIGN APP CON * 121.35 285.65 (319°-138°) 132.85 290.225 (139°-318°) | CHAMPAIGN TOWER * 120.4 (CTAF) 229.4 | GND CON 121.8 | CLNC DEL 128.75 |



| CATEGORY | A | B | C | D |
|----------|--------|-------------|--|--|
| S-4 | 1220-1 | 469 (500-1) | 1220-1 ³ / ₈ 469 (500-1 ³ / ₈) | 1220-1 ¹ / ₂ 469 (500-1 ¹ / ₂) |
| CIRCLING | 1240-1 | 485 (500-1) | 1500-2 ¹ / ₄ 745 (800-2 ¹ / ₄) | 1500-2 ¹ / ₂ 745 (800-2 ¹ / ₂) |

EC-3, 05 SEP 2024 to 03 OCT 2024

EC-3, 05 SEP 2024 to 03 OCT 2024