

LOC I-FTY 109.1	APP CRS 085°	Rwy Idg TDZE Apt Elev	5797 808 841
---------------------------	------------------------	-----------------------------	---

ILS or LOC RWY 8

FULTON COUNTY EXEC/CHARLIE BROWN FLD (FTY)

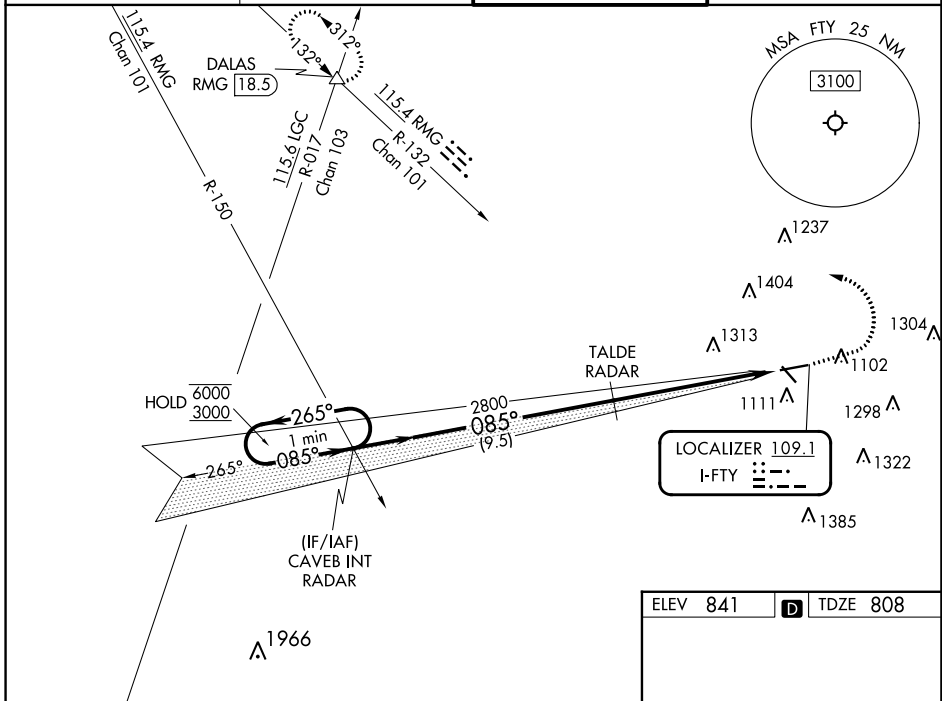
RADAR required to define TALDE.
RADAR required for procedure entry.

⚠ Circling Rwy 14, 32 NA at night. Rwy 8 helicopter visibility reduction below 3/4 SM NA.
⚠ For inop ALS, increase S-LOC 8 Cat A visibility to 1 SM, Cat C/D visibility to 2 1/2 SM.
Ridge with trees to 1299' MSL between FAF and runway threshold may be obscured by clouds even with airfield ceiling at or above procedure minimums.

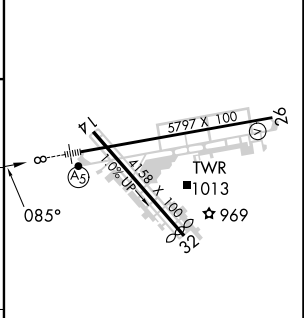
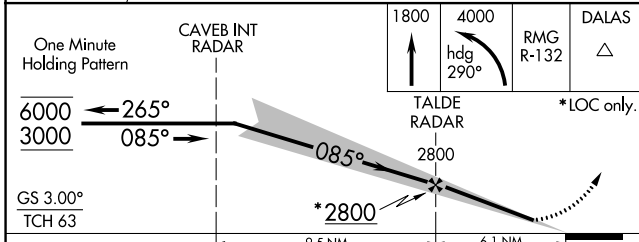


MISSED APPROACH: Climb to 1800 then climbing left turn to 4000 on heading 290° and RMG R-132 to DALAS INT/ RMG VORTAC 18.5 DME and hold.

ATIS 120.175	ATLANTA APP CON 121.0 268.7	FULTON COUNTY TOWER 118.45 257.8	GND CON 121.7 348.6
------------------------	---------------------------------------	--	-------------------------------



ELEV 841	D TDZE 808
----------	-------------------



CATEGORY	A	B	C	D
S-ILS 8	1058-1/2 250 (300-1/2)			
S-LOC 8	1640-3/4	832 (800-3/4)	1640-17/8	832 (800-17/8)
C CIRCLING	1640-1 799 (800-1)	1640-1 1/4 799 (800-1 1/4)	1740-2 3/4 899 (900-2 3/4)	1740-3 899 (900-3)

HIRL Rwy 8-26 REIL Rws 14, 26					
FAF to MAP 6.1 NM					
Knots	60	90	120	150	180
Min:Sec	6:06	4:04	3:03	2:26	2:02

ILS or LOC RWY 8

SE-4, 05 SEP 2024 to 03 OCT 2024

SE-4, 05 SEP 2024 to 03 OCT 2024