

WAAS CH <b>73003</b> <b>W08A</b>	APP CRS <b>083°</b>	Rwy Idg TDZE Apt Elev	<b>5646</b> <b>545</b> <b>545</b>
--	------------------------	-----------------------------	---

# RNAV (GPS) RWY 8

LACONIA MUNI (LCI)

RNP APCH - GPS

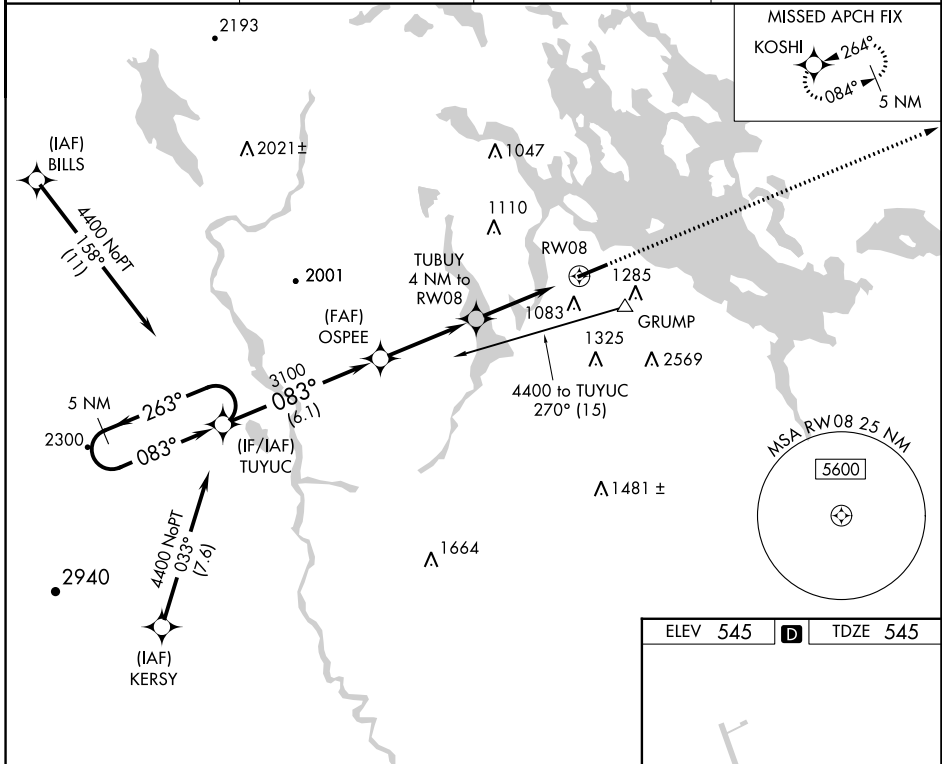
**⚠** When local altimeter setting not received, use Concord altimeter setting and increase LPV DA to 1059 feet and all visibilities ¼ SM. Increase all MDAs 100 feet and LNAV visibility Cat C/D ½ SM. VDP NA when using Concord altimeter setting. Circling NA south of Rwy 8-26. Circling Rwy 26 NA at night. For inop ALS, increase LPV visibility to 1½ SM and LNAV visibility Cat A to 1 SM Cats C and D visibility to 2 ½ SM.

MALSR



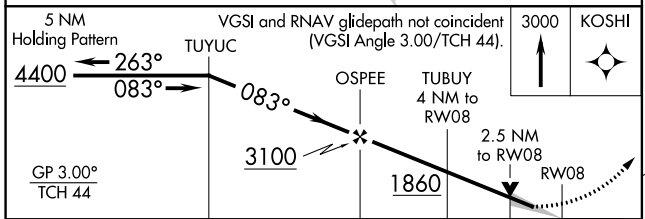
**MISSED APPROACH:**  
Climb to 3000 direct KOSHI and hold.

AWOS-3PT <b>133.525</b>	BOSTON APP CON <b>134.75 254.25</b>	CLNC DEL <b>119.85</b>	UNICOM <b>123.0 (CTAF)</b>
----------------------------	--	---------------------------	-------------------------------

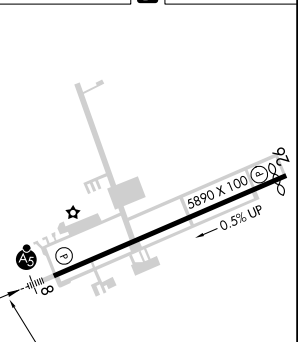


NE-1, 05 SEP 2024 to 03 OCT 2024

NE-1, 05 SEP 2024 to 03 OCT 2024



ELEV 545	<b>D</b>	TDZE 545
----------	----------	----------



CATEGORY	A	B	C	D
LPV DA	978-¾ 433 (500-¾)			
LNAV MDA	1380-¾	835 (900-¾)	1380-17/8	835 (900-17/8)
<b>C</b> CIRCLING	1420-1 875 (900-1)	1600-1½ 1055 (1100-1½)	2160-3 1615 (1700-3)	2860-3 2315 (2400-3)

REIL Rwy 26 **Ⓛ**  
HIRL Rwy 8-26 **Ⓛ**