

LOC I-AWO 111.5	APP CRS 342°	Rwy Idg 5332
		TDZE 135
		Apt Elev 142

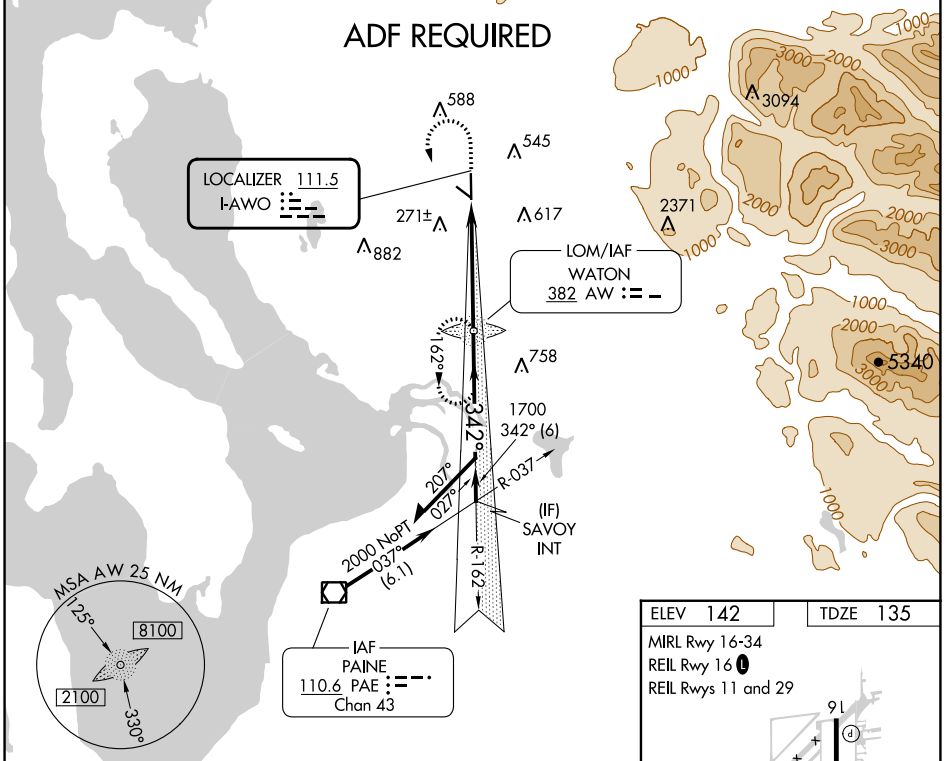
LOC RWY 34

ARLINGTON MUNI (AWO)

ADF REQUIRED. When local altimeter setting not received, use Whidbey Island NAS (Ault Field) altimeter setting: increase all MDA 80 feet and visibility S-34 Cats C and D and Circling Cats B and C ¼ SM. For inop MALS, increase S-34 Cats C and D visibility to 1 ¾.

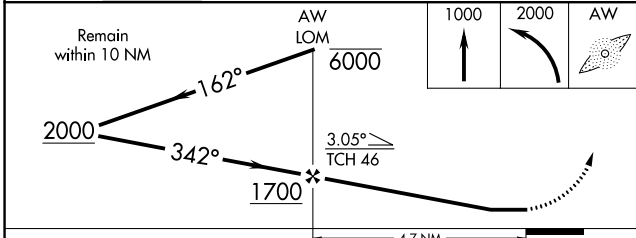
MALS
MISSED APPROACH: Climb to 1000 then climbing left turn to 2000 direct WATON LOM and hold.

AWOS-3PT 135.625	SEATTLE APP CON 128.5 306.9	CLNC DEL 121.725	CTAF 122.725
----------------------------	---------------------------------------	----------------------------	------------------------



NW-1, 05 SEP 2024 to 03 OCT 2024

NW-1, 05 SEP 2024 to 03 OCT 2024



ELEV 142	TDZE 135
MRL Rwy 16-34	
REIL Rwy 16	
REIL Rws 11 and 29	

The diagram shows the runway layout for Runway 34, including the MALS, runway width (5392 x 100 ft), and various altitudes (91, 29, 186) along the approach path.

CATEGORY	A	B	C	D
S-34	580-¾ 445 (500-¾)		580-1 445 (500-1)	
CIRCLING	840-1 698 (700-1)	900-1 758 (800-1)	1000-2½ 858 (900-2½)	1040-3 898 (900-3)

FAF to MAP 4.7 NM					
Knots	60	90	120	150	180
Min:Sec	4:42	3:08	2:21	1:53	1:34