

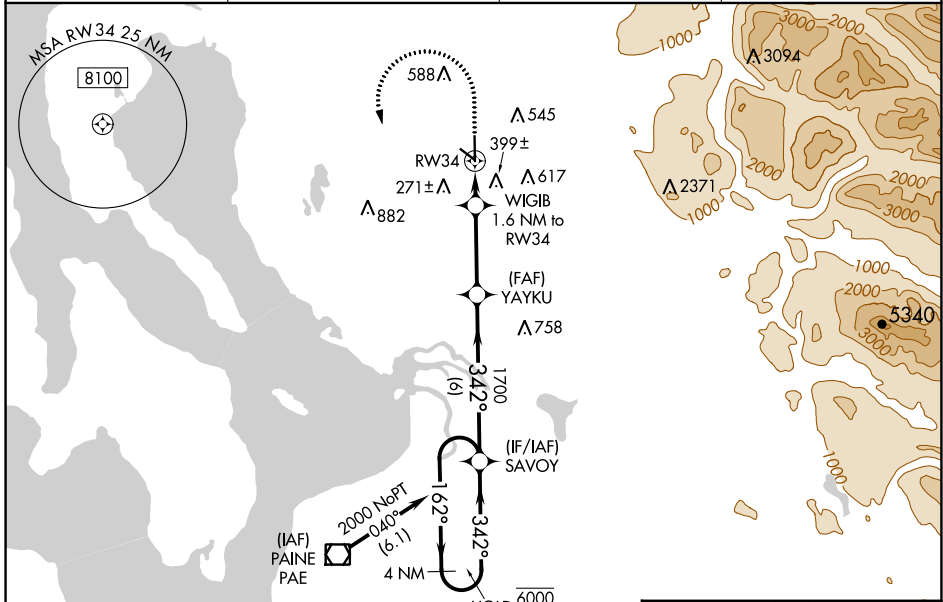
WAAS CH 90324 W34A	APP CRS 342°	Rwy Idg TDZE 135 Apt Elev 142	5332
--	------------------------	---	-------------

RNAV (GPS) RWY 34

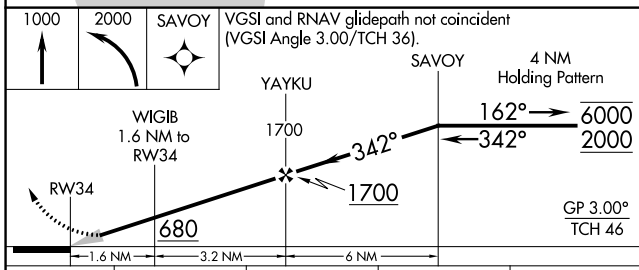
ARLINGTON MUNI (A WO)

RNP APCH-GPS.	MALS	MISSED APPROACH: Climb to 1000 then climbing left turn to 2000 direct SAVOY and hold.
<p> Inop table does not apply to LPV. For uncompensated Baro-VNAV systems, LNAV/VNAV NA below -15°C or above 54°C. For inop ALS, increase LNAV/VNAV all Cats visibility to 1 1/2 SM and LNAV Cat C and D visibility to 1 1/2 SM.</p>		

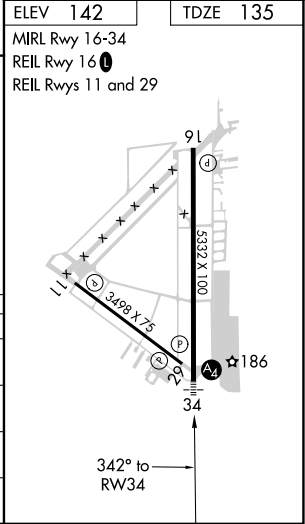
AWOS-3PT 135.625	SEATTLE APP CON 128.5 306.9	CLNC DEL 121.725	CTAF 122.725
----------------------------	---------------------------------------	----------------------------	------------------------



Procedure NA for arrival on PAE VOR/DME airway radials 298 CW 329, and on T268 westbound.



CATEGORY	A	B	C	D
LPV DA		335-3/4	200 (200-3/4)	
LNAV/VNAV DA		510-3/4	375 (400-3/4)	
LNAV MDA	540-3/4	405 (400-3/4)	540-1	405 (400-1)
CIRCLING	840-1 698 (700-1)	900-1 758 (800-1)	1000-2 1/2 858 (900-2 1/2)	1040-3 898 (900-3)



NW-1, 05 SEP 2024 to 03 OCT 2024

NW-1, 05 SEP 2024 to 03 OCT 2024