

WAAS CH 42625 W17A	APP CRS 166°	Rwy Idg TDZE Apt Elev	5840 2364 2380
--	------------------------	-----------------------------	---

RNAV (GPS) RWY 17

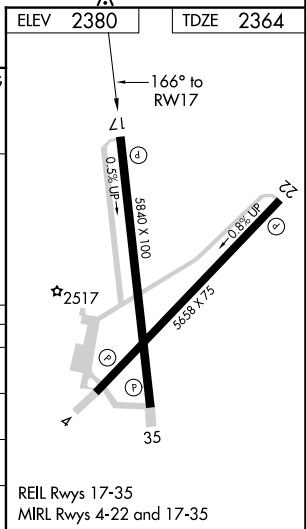
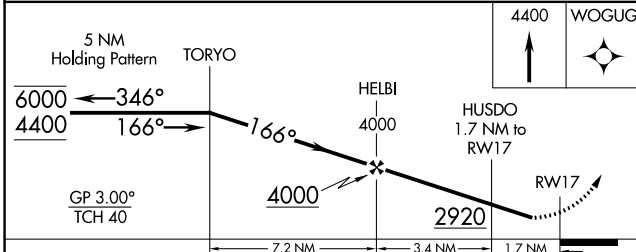
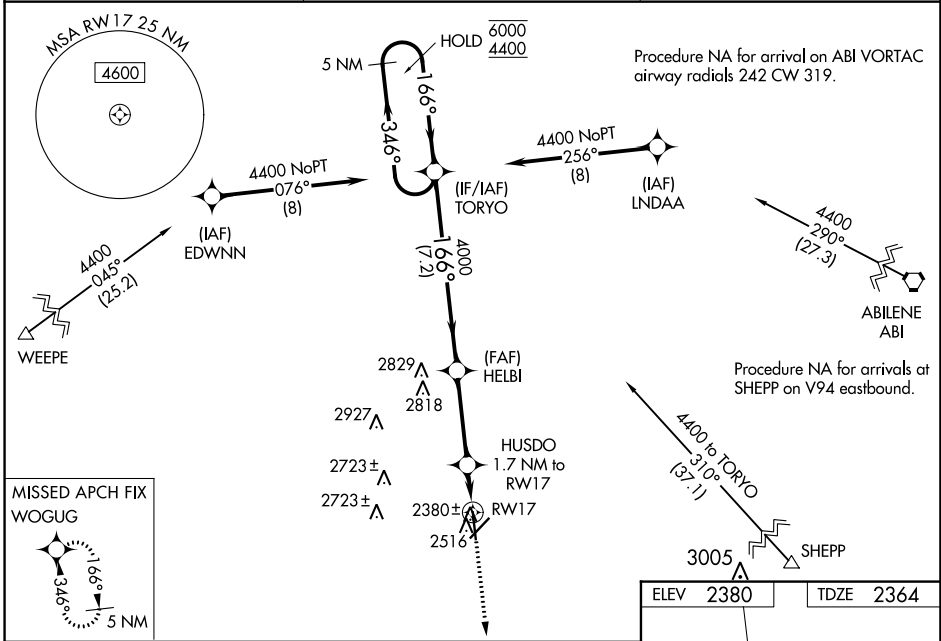
AVENGER FLD (SWW)

RNP APCH - GPS.

▼ Rwy 17 helicopter visibility reduction below 1 SM NA.
 ▲ For uncompensated Baro-VNAV systems, LNAV/VNAV NA below -19°C or above 54°C. Straight-in Rwy 17 and Circling Rwy 17, 22 NA at night.

MISSED APPROACH: Climb to 4400 direct WOGUG and hold.

AWOS-3 119.025	ABILENE APP CON 127.2 282.3	UNICOM 122.8 (CTAF)
--------------------------	---------------------------------------	-------------------------------



CATEGORY	A	B	C	D
LPV DA		2614-1	250 (300-1)	
LNAV/VNAV DA		2619-1	255 (300-1)	
LNAV MDA		2680-1	316 (300-1)	
C CIRCLING	2880-1	500 (500-1)	3080-2 700 (700-2)	3080-2 1/4 700 (700-2 1/4)

SC-2, 05 SEP 2024 to 03 OCT 2024

SC-2, 05 SEP 2024 to 03 OCT 2024