

APP CRS 057°
Rwy ldg 4380
TDZE 644
Apt Elev 644

RNAV (GPS) RWY 7

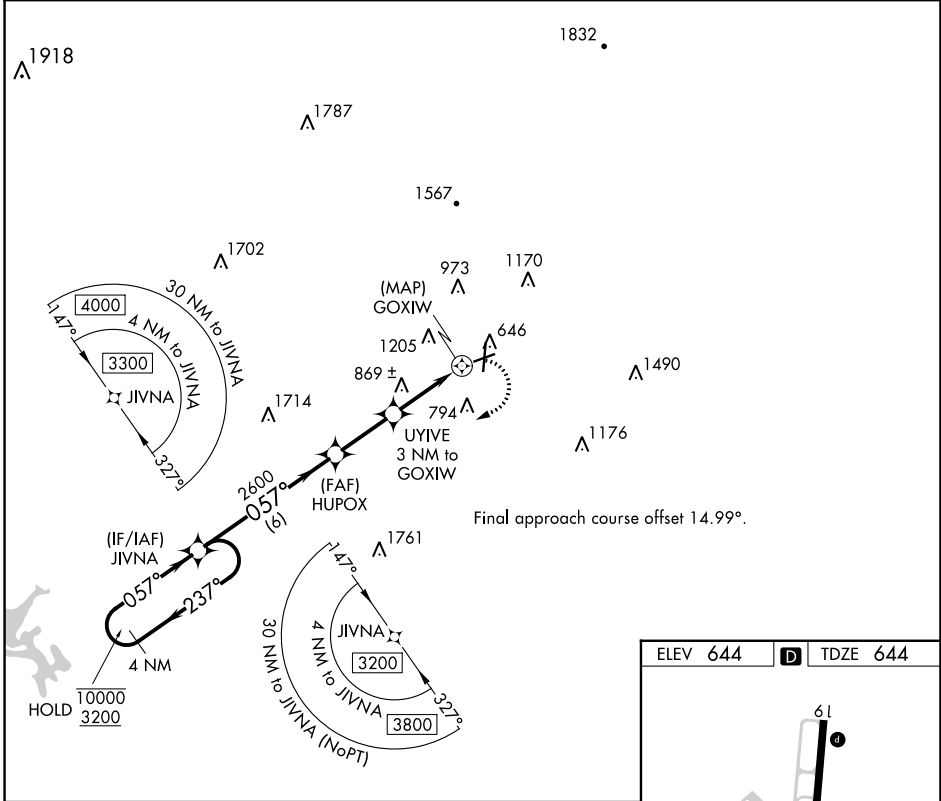
RICHARD B RUSSELL RGNL - J H TOWERS FLD (RMG)

RNP APCH - GPS.

⚠ Rwy 7 helicopter visibility reduction below 3/4 SM NA.
⚠ Straight-in minimums NA at night.
Circling NA northwest of Rwy 7 and 19.

MISSED APPROACH: Climbing right turn to 3200 direct JIVNA and hold.

ASOS 119.925	ATLANTA CENTER 124.5 270.325	GCO 121.725	UNICOM 122.725 (CTAF) 0
------------------------	--	-----------------------	-----------------------------------



SE-4, 05 SEP 2024 to 03 OCT 2024

SE-4, 05 SEP 2024 to 03 OCT 2024

ELEV 644 **D** TDZE 644

10000
3200

← 237°

057° →

057°

3200

JIVNA

HUPOX

UYIVE
3 NM to
GOXIW

3.00°

TCH 45

1800

1.7 NM to
GOXIW

GOXIW

057°

61

0.4% UP

4495 X 100

151 X 900

600

AS

057°

CATEGORY	A	B	C	D
LNNAV MDA	1380-1	736 (800-1)	1380-2	736 (800-2)
C CIRCLING	1380-1	736 (800-1)	1480-2½ 836 (900-2½)	1840-3 1196 (1200-3)

HIRL Rwy 1-19 **L**