

WAAS CH 93836 W12A	APP CRS 127°	Rwy Idg TDZE Apt Elev	7506 4457 4457
---------------------------------	------------------------	-----------------------------	---

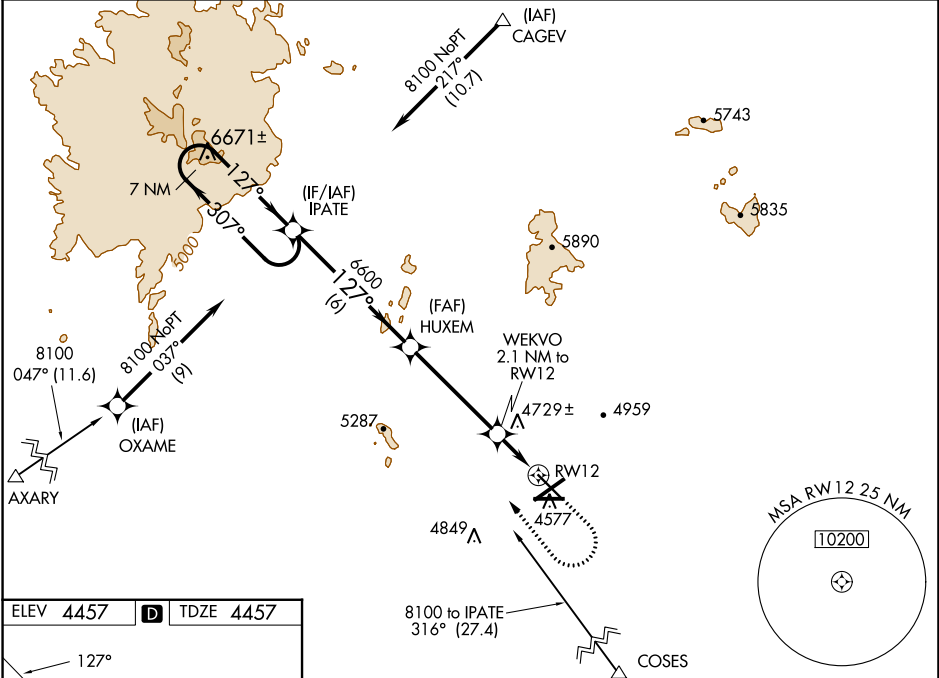
RNAV (GPS) RWY 12

LAS CRUCES INTL (LRU)

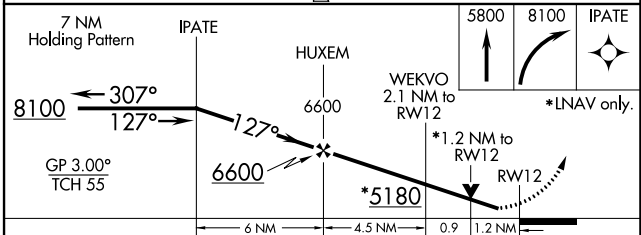
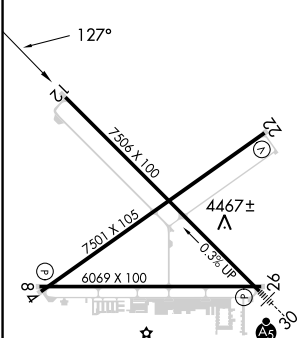
⚠ For uncompensated Baro-VNAV systems, LNAV/VNAV NA below -12 °C (11°F) or above 49°C (120°F). DME/DME RNP-0.3 NA. Helicopter visibility reduction below ¾ SM NA. Baro-VNAV and VDP NA when using Deming altimeter setting. When local altimeter setting not received, use Deming altimeter setting; increase LPV DA to 4821 feet and LNAV/VNAV DA to 4824 feet and all visibilities ½ mile; increase all MDA 120 feet and visibility Cat C and D ½ mile.

MISSED APPROACH: Climb to 5800 then climbing right turn to 8100 direct IPATE and hold.

AWOS-3 119,025	ALBUQUERQUE CENTER 128.2 285.5	UNICOM 122.7 (CTAF) 0
--------------------------	--	---------------------------------



ELEV 4457	D	TDZE 4457
------------------	----------	------------------



CATEGORY	A	B	C	D
LPV DA		4707-¾	250 (300-¾)	
LNAV/VNAV DA		4710-¾	253 (300-¾)	
LNAV MDA	4900-1	443 (500-1)	4900-1⅜	443 (500-1⅜)
C CIRCLING	4900-1 443 (500-1)	5040-1 583 (600-1)	5320-2½ 863 (900-2½)	5320-2¾ 863 (900-2¾)

REIL Rwy 12
HIRL Rwy 12-30 0
MIRL Rwy 4-22 and 8-26 0

LAS CRUCES, NEW MEXICO
Amdt 2 18AUG16

32°17'N-106°55'W

LAS CRUCES INTL (LRU)

RNAV (GPS) RWY 12

SW-1, 05 SEP 2024 to 03 OCT 2024

SW-1, 05 SEP 2024 to 03 OCT 2024