

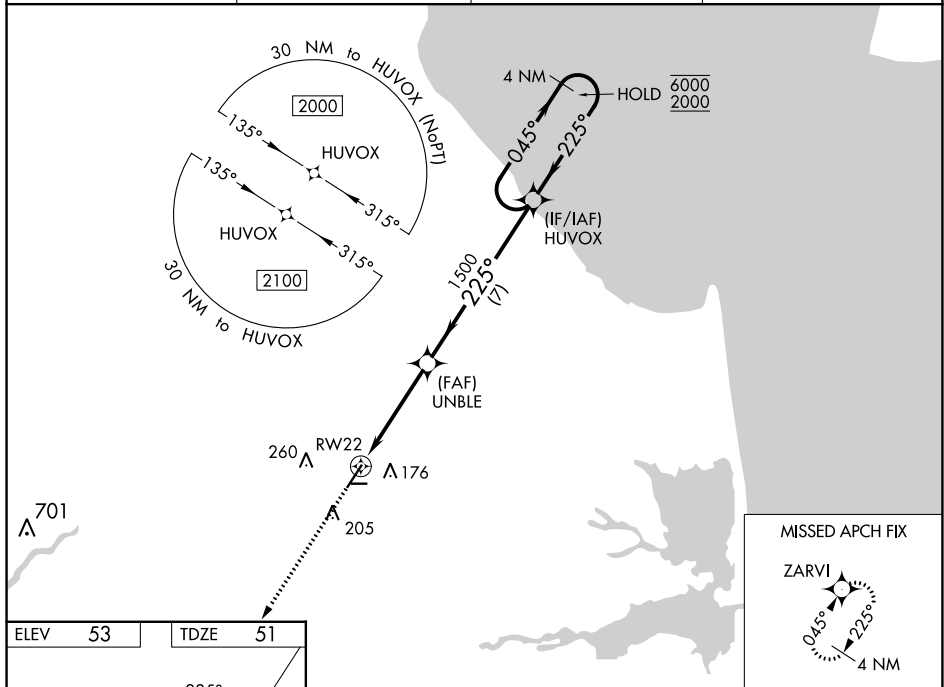
WAAS CH <b>60921</b> <b>W22A</b>	APP CRS <b>225°</b>	Rwy Idg TDZE Apt Elev	<b>5331</b> <b>51</b> <b>53</b>
--	------------------------	-----------------------------	---------------------------------------

# RNAV (GPS) RWY 22

DELAWARE COASTAL (GED)

RNP APCH.		MISSED APPROACH: Climb to 2000 direct ZARVI and hold.	
<p><b>⚠</b> Rwy 22 helicopter visibility reduction below <math>\frac{3}{4}</math> NA. For uncompensated Baro-VNAV systems, LNAV/VNAV NA below -11°C or above 54°C.</p>			

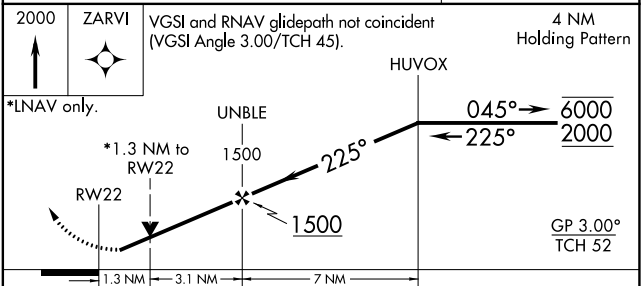
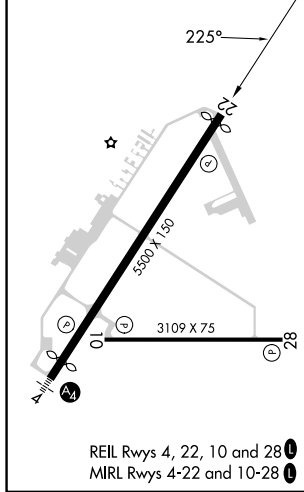
ASOS <b>118.375</b>	DOVER APP CON <b>132.425 257.875</b>	GCO <b>125.55</b>	UNICOM <b>123.0 (CTAF)</b> <b>📻</b>
------------------------	---	----------------------	--



NE-3, 05 SEP 2024 to 03 OCT 2024

NE-3, 05 SEP 2024 to 03 OCT 2024

ELEV 53	TDZE 51
---------	---------



CATEGORY	A	B	C	D
LPV DA		321- $\frac{7}{8}$	270 (300- $\frac{7}{8}$ )	
LNAV/VNAV DA		446-1 $\frac{1}{8}$	395 (400-1 $\frac{1}{8}$ )	
LNAV MDA	500-1	449 (500-1)	500-1 $\frac{1}{8}$	449 (500-1 $\frac{1}{8}$ )
<b>CIRCLING</b>	560-1 507 (600-1)	580-1 527 (600-1)	720-1 $\frac{3}{4}$ 667 (700-1 $\frac{3}{4}$ )	720-2 667 (700-2)