

WAAS CH 78240 W20A	APP CRS 196°	Rwy ldg 5529 TDZE 3908 Apt Elev 3908
--	------------------------	---

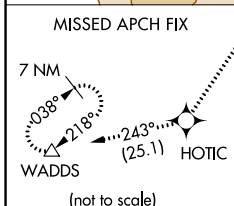
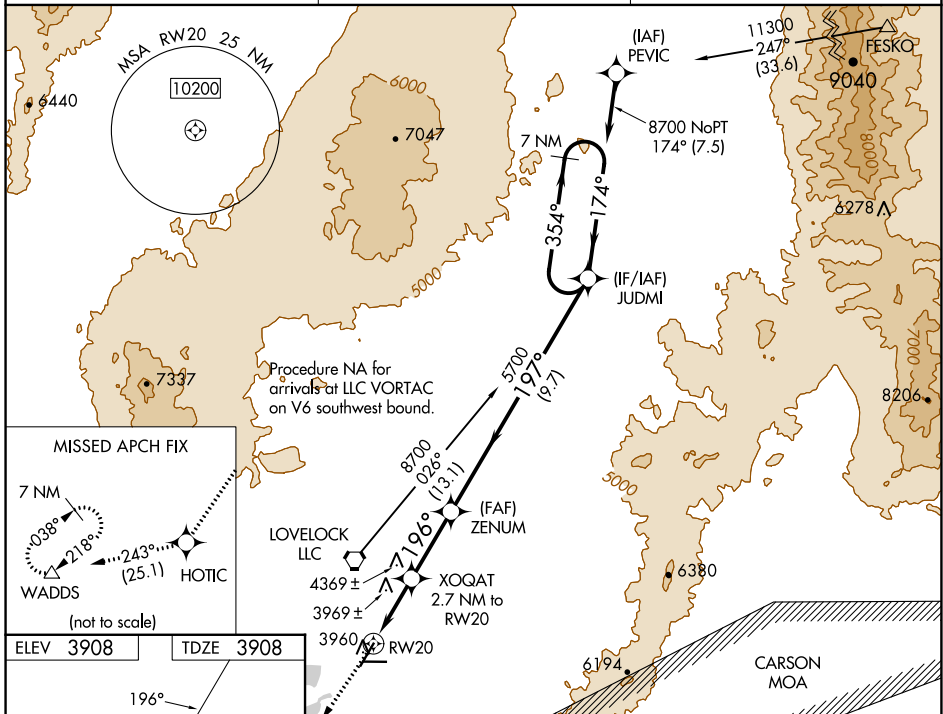
RNAV (GPS) RWY 20

DERBY FLD (LOL)

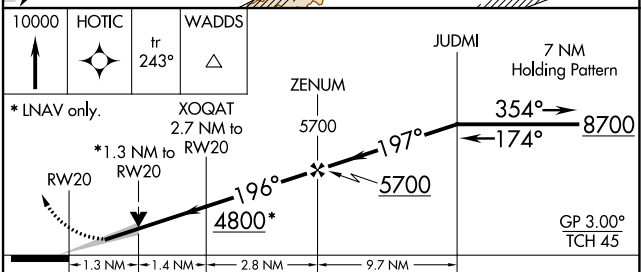
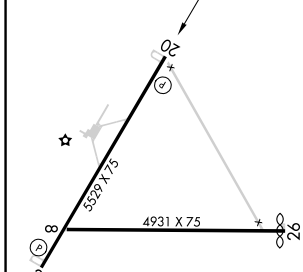
⚠ For uncompensated Baro-VNAV systems, LNAV/VNAV NA below -19°C (-2°F) or above 52°C (127°F). Circling NA northwest of Rwy 2-20. DME/DME RNP-0.3 NA.

MISSED APPROACH: Climb to 10000 direct HOTIC and on track 243° to WADDS and hold.

ASOS 120.675	OAKLAND CENTER 128.8 285.5	UNICOM 122.8 (CTAF)
------------------------	--------------------------------------	-------------------------------



ELEV 3908	TDZE 3908
-----------	-----------



CATEGORY	A	B	C	D
LPV DA	4158-1		250 (300-1)	
LNAV/VNAV DA	4249-1 1/8		341 (400-1 1/8)	
LNAV MDA	4360-1	452 (500-1)	4360-1 3/8	452 (500-1 3/8)
C CIRCLING	4360-1	452 (500-1)	4540-1 3/4 632 (700-1 3/4)	4680-2 1/2 772 (800-2 1/2)

REIL Rwy 2 and 20
MIRL Rwy 2-20

SW-4, 05 SEP 2024 to 03 OCT 2024

SW-4, 05 SEP 2024 to 03 OCT 2024