

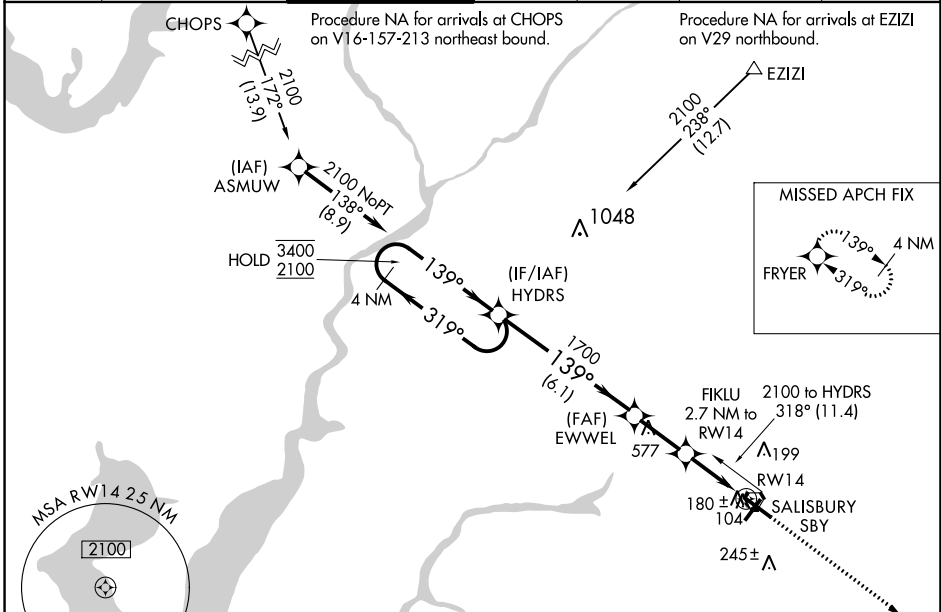
WAAS CH 56320 W14A	APP CRS 139°	Rwy Idg TDZE Apt Elev	6400 49 53
----------------------------------------	------------------------	-----------------------------	---------------------------------------

RNAV (GPS) RWY 14

SALISBURY-OCEAN CITY WICOMICO RGNL (SBY)

RNP APCH.						MISSED APPROACH: Climb to 2000 direct FRYER and hold.
<p>T Rwy 14 helicopter visibility reduction below 3/4 SM NA. A For uncompensated Baro-VNAV systems, LNAV/VNAV NA below -16° C or above 54° C.</p>						

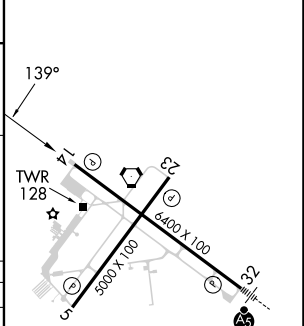
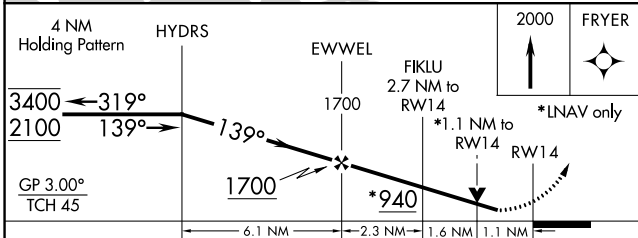
ASOS 118.325	PATUXENT APP CON ★ 127.95 314.0	SALISBURY TOWER ★ 119.425 (CTAF) 0	GND CON 123.775	CLNC DEL 123.775	CLNC DEL 118.55 (when twr closed)	UNICOM 122.95
------------------------	-------------------------------------------	----------------------------------------------	---------------------------	----------------------------	------------------------------------------------	-------------------------



NE-3, 05 SEP 2024 to 03 OCT 2024

NE-3, 05 SEP 2024 to 03 OCT 2024

ELEV 53	D TDZE 49
---------	------------------



CATEGORY	A	B	C	D
LPV DA	363-1 314 (400-1)			
LNAV/VNAV DA	453-1½ 404 (400-1½)			
LNAV MDA	440-1 391 (400-1)	440-1½ 391 (400-1½)		440-1¼ 391 (400-1¼)
C CIRCLING	480-1 427 (500-1)	520-1 467 (500-1)	560-1½ 507 (600-1½)	700-2 647 (700-2)

REIL Rwy 5, 14 and 23
MIRL Rwy 5-23
HIRL Rwy 14-32