

WAAS CH <b>78018</b> <b>W23A</b>	APP CRS <b>229°</b>	Rwy Idg <b>5000</b> TDZE <b>49</b> Apt Elev <b>53</b>
--	------------------------	---

# RNAV (GPS) RWY 23

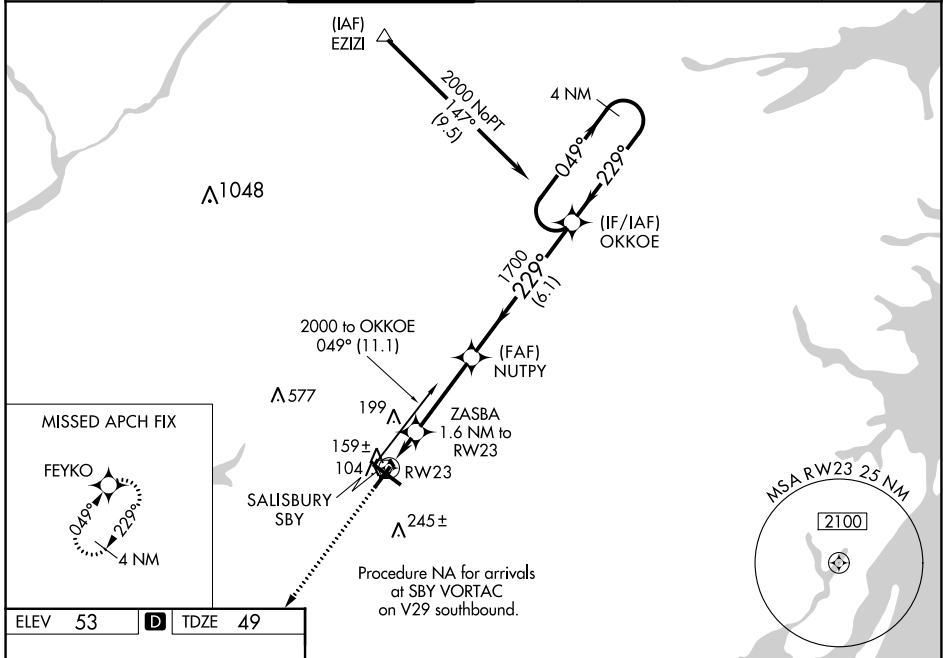
SALISBURY-OCEAN CITY WICOMICO RGNL (SBY)

RNP APCH

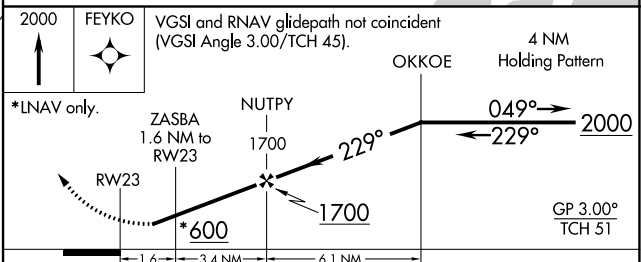
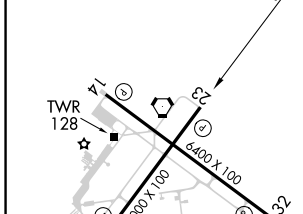
Baro-VNAV NA when using Georgetown altimeter setting. For uncompensated Baro-VNAV systems, LNAV/VNAV NA below -15°C or above 43°C. Rwy 23 helicopter visibility reduction below ¾ SM NA. When local altimeter setting not received use Georgetown altimeter setting: increase LPV DA to 426 feet and all Cats visibility ¼ SM; increase LNAV/VNAV DA to 503 feet; increase all MDA 60 feet and LNAV Cat C/D and Circling Cat D visibility ¼ SM.

MISSED APPROACH:  
Climb to 2000 direct FEYKO and hold.

ASOS <b>118.325</b>	PATUXENT APP CON ★ <b>127.95 314.0</b>	SALISBURY TOWER ★ <b>119.425</b> (CTAF) <b>0</b>	GND CON <b>123.775</b>	CLNC DEL <b>123.775</b>	CLNC DEL <b>118.55</b> (when twr closed)	UNICOM <b>122.95</b>
------------------------	---	---	---------------------------	----------------------------	--	-------------------------



ELEV 53	<b>D</b>	TDZE 49
---------	----------	---------



CATEGORY	A	B	C	D
LPV DA		374-1	325 (400-1)	
LNAV/VNAV DA		451-1½	402 (400-1½)	
LNAV MDA		420-1	371(400-1)	420-1¼ 371 (400-1¼)
CIRCLING	480-1 427 (500-1)	520-1 467 (500-1)	560-1½ 507 (600-1½)	700-2 647 (700-2)

REIL Rwy 5, 14 and 23 **0**  
MIRL Rwy 5-23 **0**  
HIRL Rwy 14-32 **0**

NE-3, 05 SEP 2024 to 03 OCT 2024

NE-3, 05 SEP 2024 to 03 OCT 2024