

WAAS CH 62820 W05A	APP CRS 049°	Rwy Idg TDZE Apt Elev	5000 48 53
--	------------------------	-----------------------------	---------------------------------------

RNAV (GPS) RWY 5

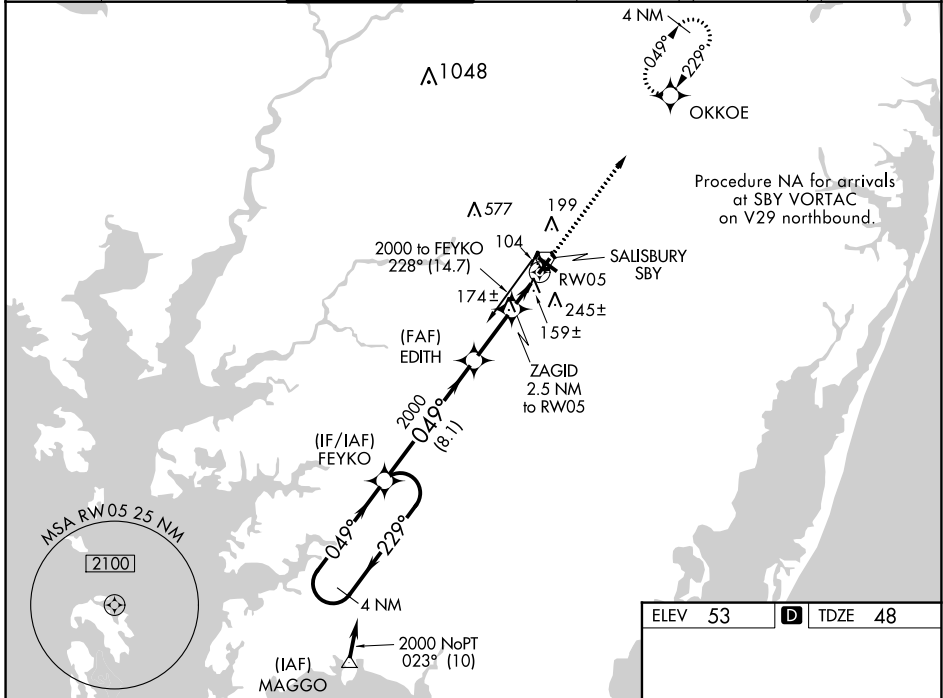
SALISBURY-OCEAN CITY WICOMICO RGNL (SBY)

RNP APCH.

Baro-VNAV NA when using Georgetown altimeter setting. For uncompensated Baro-VNAV systems, LNAV/VNAV NA below -15°C or above 49°C. Visibility reduction by helicopters NA. When local altimeter setting not received use Georgetown altimeter setting: increase LPV DA to 394 feet and increase all Cats visibility ¼ SM; increase LNAV/VNAV DA to 512 feet and all Cats visibility ¼ SM; increase all MDA 60 feet and LNAV Cat C/D and Circling Cat D visibility ¼ SM.

MISSED APPROACH: Climb to 2000 direct OKKOE and hold.

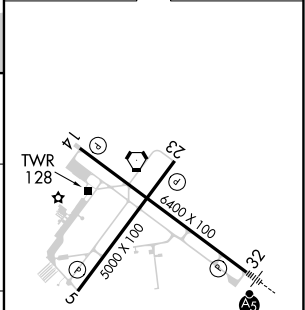
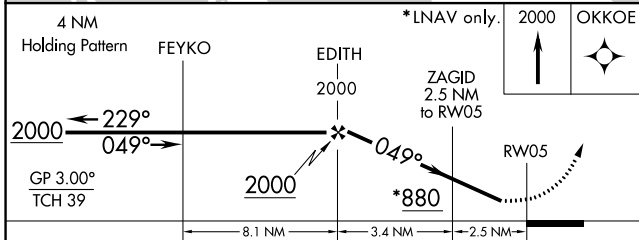
ASOS 118.325	PATUXENT APP CON* 127.95 314.0	SALISBURY TOWER* 119.425 (CTAF) 0	GND CON 123.775	CLNC DEL 123.775	CLNC DEL 118.55 (when twr closed)	UNICOM 122.95
------------------------	--	--	---------------------------	----------------------------	--	-------------------------



NE-3, 05 SEP 2024 to 03 OCT 2024

NE-3, 05 SEP 2024 to 03 OCT 2024

ELEV 53	D TDZE 48
---------	------------------



CATEGORY	A	B	C	D
LPV DA	342-1		294 (300-1)	
LNAV/VNAV DA	460-1½		412 (500-1½)	
LNAV MDA	440-1 392 (400-1)		440-1¼ 392 (400-1¼)	
CIRCLING	480-1 427 (500-1)	520-1 467 (500-1)	560-1½ 507 (600-1½)	700-2 647 (700-2)



REIL Rwy 5, 14 and 23
MRL Rwy 5-23
HIRL Rwy 14-32