


LOC/DME I-VQO 109.5 Chan 32	APP CRS 005°	Rwy Idg TDZE Apt Elev	12503 72 80
---	------------------------	-----------------------------	--

ILS or LOC RWY 36R

CECIL (VQO)

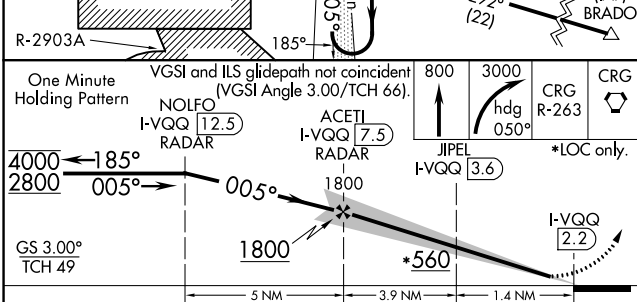
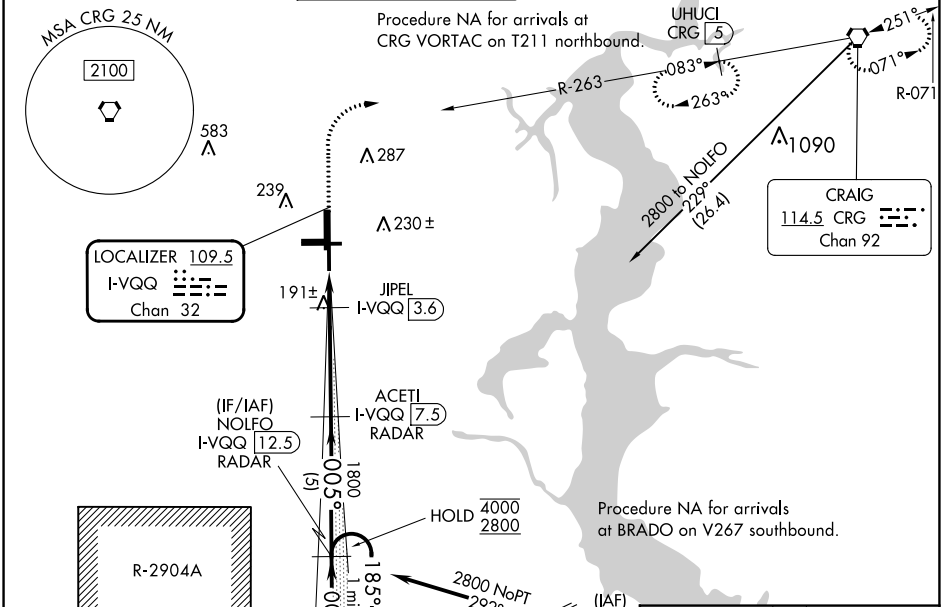
From BRADO: RNAV 1-GPS required.
DME or RADAR required for LOC only.

MALS 

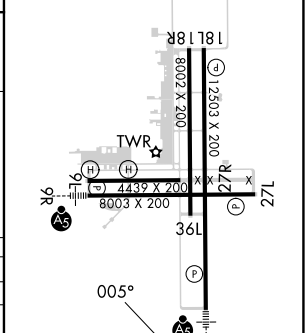
MISSED APPROACH: Climb to 800 then climbing right turn to 3000 on heading 050° and on CRG VORTAC R-263 to CRG VORTAC and hold. (TACAN aircraft climb to 800 then climbing right turn to 3000 on heading 050° and on CRG VORTAC R-263 to UHUCI/CRG 5 DME and hold west, right turn, 083° inbound).

For inop ALS, increase S-ILS 36R Cat E visibility to 3/4 SM, S-LOC 36R Cats C/D/E visibility to 1 3/8 SM, increase JIPEL fix minimums S-LOC 36R Cat E visibility to 1 1/8 SM.

ATIS 125.275	JACKSONVILLE APP CON 127.775 377.075	CECIL TOWER* 126.1 (CTAF) 235.625	GND CON 121.625 226.675	CLNC DEL 123.975 254.25	GCO 135.075
------------------------	--	--	-----------------------------------	-----------------------------------	-----------------------



ELEV 80	TDZE 72
---------	---------



CATEGORY	A	B	C	D	E
S-ILS 36R	272-1/2 200 (200-1/2)				
S-LOC 36R	560-1/2	488 (500-1/2)	560-1	488 (500-1)	
C CIRCLING	560-1	480 (500-1)	600-1 1/2 520 (600-1 1/2)	640-2 560 (600-2)	900-3 820 (900-3)
JIPEL FIX MINIMUMS (DME REQUIRED)					
S-LOC 36R	460-1/2	388 (400-1/2)	460-5/8	388 (400-5/8)	
C CIRCLING	540-1 460 (500-1)	560-1 480 (500-1)	600-1 1/2 520 (600-1 1/2)	640-2 560 (600-2)	900-3 820 (900-3)
FAF to MAP 5.3 NM					
Knots	60	90	120	150	180
Min:Sec	5:18	3:32	2:39	2:07	1:46

SE-3, 05 SEP 2024 to 03 OCT 2024

SE-3, 05 SEP 2024 to 03 OCT 2024