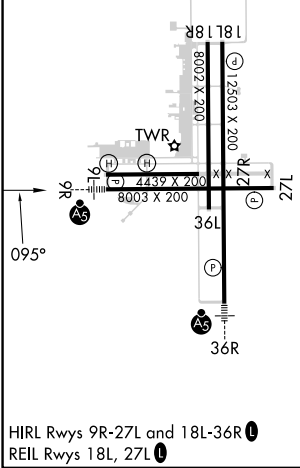
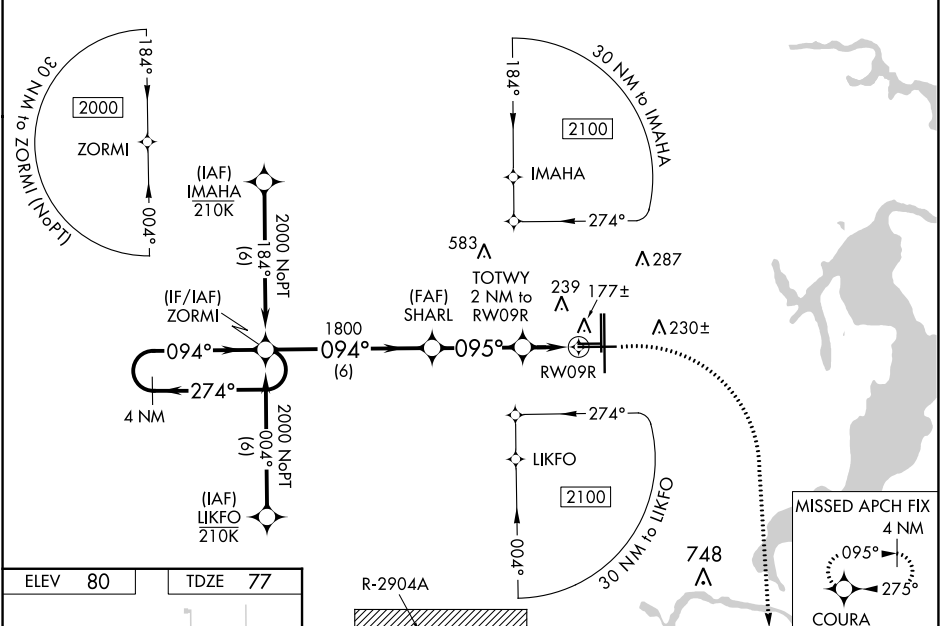


WAAS CH <b>50516</b> <b>W09A</b>	APP CRS <b>095°</b>	Rwy Idg <b>8003</b> TDZE <b>77</b> Apt Elev <b>80</b>
--	------------------------	---

# RNAV (GPS) RWY 9R

CECIL (VQQ)

<p><b>▼</b> Baro-VNAV NA when using Jacksonville Intl altimeter setting. For uncompensated Baro-VNAV systems, LNAV/VNAV NA below -15°C (5°F) or above 54°C (130°F). DME/DME RNP-0.3 NA.</p> <p><b>▲</b> Helicopter visibility reduction below 3/4 SM NA. When local altimeter setting not received, use Jacksonville Intl altimeter setting and increase all DA 52 feet and all MDA 60 feet. For inop MALSRS, increase LPV and LNAV/VNAV all Cats visibility to 7/8 mile, and LNAV all Cats visibility to 1 mile. For inop MALSRS, when using Jacksonville Intl altimeter setting, increase LPV all Cats visibility to 1 mile, LNAV/VNAV all Cats visibility to 1 mile, and LNAV Cats C/D visibility to 1 1/8 mile.</p>		<p>MALSRS</p>	<p>MISSED APPROACH: Climb to 700 then climbing right turn to 2000 direct COURA and hold.</p>		
ATIS <b>125.275</b>	JACKSONVILLE APP CON <b>127.775 377.075</b>	CECIL TOWER* <b>126.1 (CTAF) 235.625</b>	GND CON <b>121.625 226.675</b>	CINC DEL <b>123.975 254.25</b>	GCO <b>135.075</b>



<p>4 NM Holding Pattern ZORMI</p> <p>VGSI and RNAV glidepath not coincident (VGSI Angle 3.00/TCH 68).</p> <p>GP 3.00° TCH 53</p>		<p>700</p> <p>2000</p> <p>COURA</p>																													
<p>2000 ← 274° → 094°</p> <p>1800</p> <p>094°</p> <p>095°</p> <p>*760</p> <p>*0.9 NM to RWY09R</p> <p>RWY09R</p>		<p>*LNAV only.</p> <p>TOTWY 2 NM to RWY09R</p>																													
<p>6 NM</p> <p>3.3 NM</p> <p>1.1</p> <p>0.9</p>																															
<table border="1"> <thead> <tr> <th>CATEGORY</th> <th>A</th> <th>B</th> <th>C</th> <th>D</th> </tr> </thead> <tbody> <tr> <td>LPV DA</td> <td></td> <td>351-3/4</td> <td>274 (300-3/4)</td> <td></td> </tr> <tr> <td>LNAV/VNAV DA</td> <td></td> <td>338-3/4</td> <td>261 (300-3/4)</td> <td></td> </tr> <tr> <td>LNAV MDA</td> <td></td> <td>440-3/4</td> <td>363 (400-3/4)</td> <td></td> </tr> <tr> <td rowspan="2">CIRCLING</td> <td>540-1</td> <td>560-1</td> <td>600-1 1/2</td> <td>640-2</td> </tr> <tr> <td>460 (500-1)</td> <td>480 (500-1)</td> <td>520 (600-1 1/2)</td> <td>560 (600-2)</td> </tr> </tbody> </table>	CATEGORY	A	B	C	D	LPV DA		351-3/4	274 (300-3/4)		LNAV/VNAV DA		338-3/4	261 (300-3/4)		LNAV MDA		440-3/4	363 (400-3/4)		CIRCLING	540-1	560-1	600-1 1/2	640-2	460 (500-1)	480 (500-1)	520 (600-1 1/2)	560 (600-2)		
CATEGORY	A	B	C	D																											
LPV DA		351-3/4	274 (300-3/4)																												
LNAV/VNAV DA		338-3/4	261 (300-3/4)																												
LNAV MDA		440-3/4	363 (400-3/4)																												
CIRCLING	540-1	560-1	600-1 1/2	640-2																											
	460 (500-1)	480 (500-1)	520 (600-1 1/2)	560 (600-2)																											

SE-3, 05 SEP 2024 to 03 OCT 2024

SE-3, 05 SEP 2024 to 03 OCT 2024