

TACAN NIP Chan 19 (108.2)	APP CRS 269°	Rwy Idg TDZE Apt Elev	8003 72 80
--	------------------------	-----------------------------	---------------------------------------

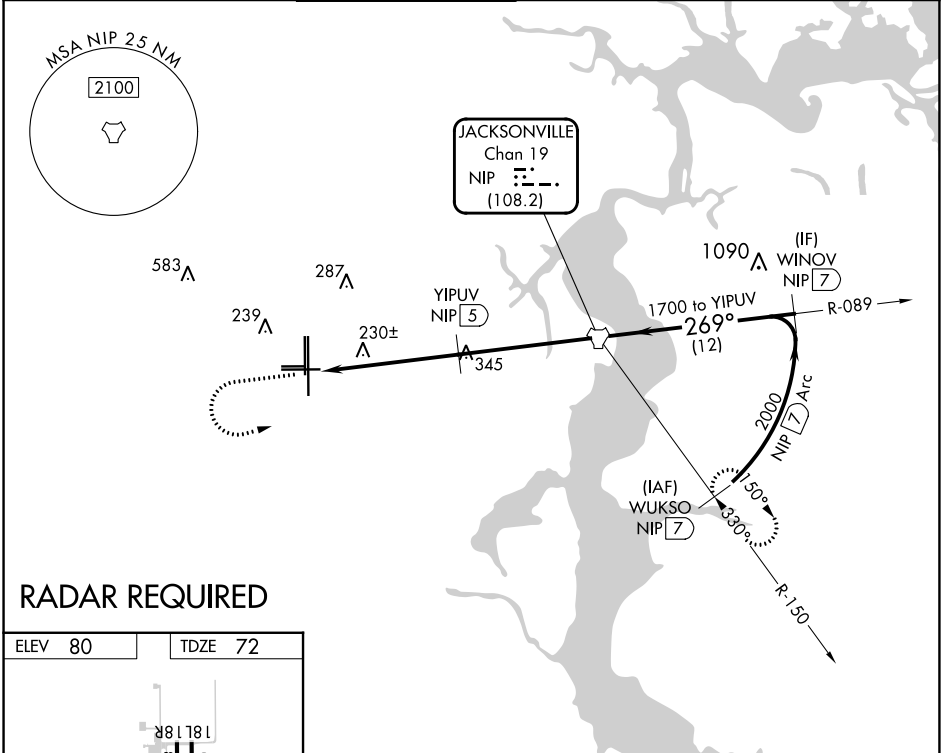
TACAN RWY 27L

CECIL (VQQ)

⚠ VDP NA with Jacksonville Intl altimeter setting. Helicopter visibility reduction below $\frac{3}{4}$ SM NA. When local altimeter setting not received, use Jacksonville Intl altimeter setting and increase all MDA 60 feet, increase S-27L Cats C, D, E visibility $\frac{1}{8}$ mile.

⚠ MISSED APPROACH: Climb to 700 then climbing left turn to 2100 direct NIP TACAN and continue on NIP TACAN R-150 to WUKSO/7 DME and hold.

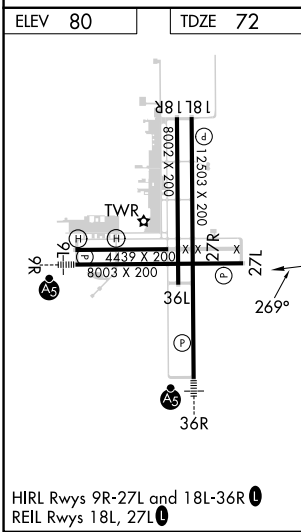
ATIS 125.275	JACKSONVILLE APP CON 127.775 377.075	CECIL TOWER* 126.1 (CTAF) 235.625	GND CON 121.625 226.675	CLNC DEL 123.975 254.25	GCO 135.075
------------------------	--	--	-----------------------------------	-----------------------------------	-----------------------



SE-3, 05 SEP 2024 to 03 OCT 2024

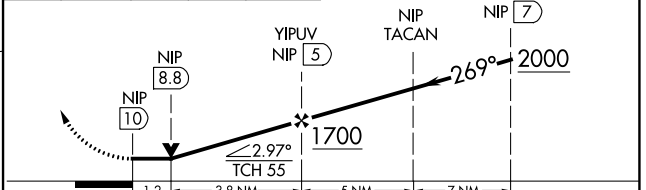
SE-3, 05 SEP 2024 to 03 OCT 2024

RADAR REQUIRED



700 2100 NIP WUKSO
NIP R-150 NIP 7

VGSI and descent angles not coincident (VGSI Angle 3.00/TCH 67).



CATEGORY	A	B	C	D	E
S-27L	540-1	468 (500-1)	540-1 $\frac{3}{8}$	468 (500-1 $\frac{3}{8}$)	
C CIRCLING	540-1 460 (500-1)	560-1 480 (500-1)	600-1 $\frac{1}{2}$ 520 (600-1 $\frac{1}{2}$)	640-2 560 (600-2)	900-3 820 (900-3)