

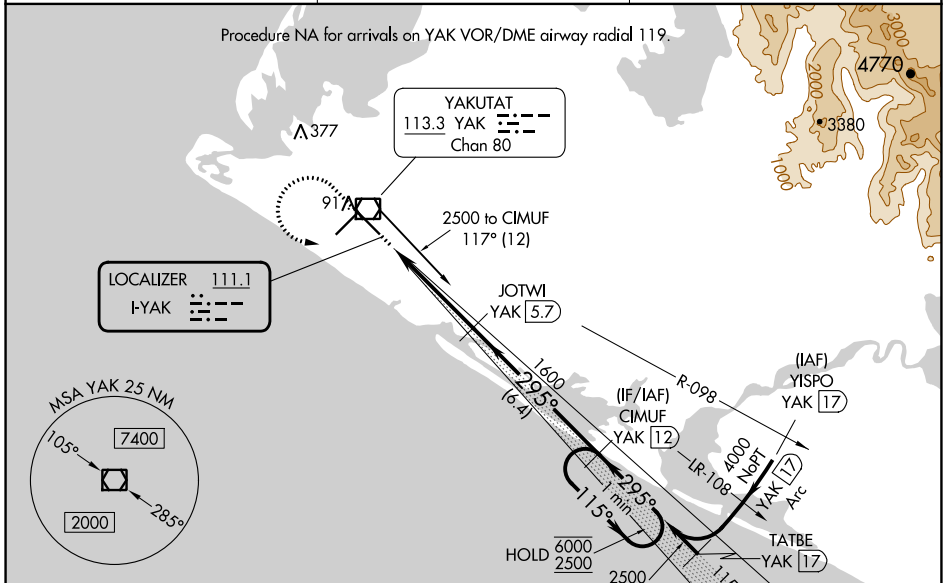
LOC I-YAK <b>111.1</b>	APP CRS <b>295°</b>	Rwy Idg <b>7732</b> TDZE <b>32</b> Apt Elev <b>40</b>
---------------------------	------------------------	---

# LOC BC RWY 29

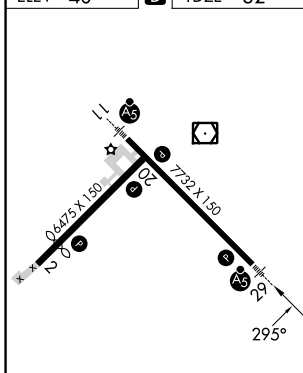
YAKUTAT (YAK) (PAYA)

DME required.	MALSR	MISSED APPROACH: Climb to 2000 then climbing left turn to 2500 on YAK VOR/DME R-117 to CIMUF/YAK 12 DME and hold.
<p><b>⚠</b> Circling Rwy 20 NA at night. Rwy 29 helicopter visibility reduction below 3/4 SM NA. Inop table does not apply to S-LOC 29 Cats A and B. When Yakutat altimeter setting not received, procedure NA. For inop ALS, increase S-LOC 29 Cats C and D visibility to 1 3/8 SM. DME from YAK VOR/DME. DME use requires simultaneous reception of I-YAK and YAK DME.</p>		

ASOS <b>135.75</b>	ANCHORAGE CENTER <b>119.0 263.1</b>	JUNEAU RADIO <b>123.6 (CTAF) 0</b>
-----------------------	--	---------------------------------------



ELEV 40	<b>D</b> TDZE 32
---------	------------------



REIL Rws 2 and 20	<b>0</b>
HIRL Rws 2-20 and 11-29	<b>0</b>
FAF to MAP 4.1 NM	
Knots	60 90 120 150 180
Min:Sec	4:06 2:44 2:03 1:38 1:22

## BACK COURSE

	2000	2500	CIMUF YAK 12	CIMUF YAK 12	One Minute Holding Pattern
	↑	YAK R-117	JOTWI YAK 5.7	YAK 2.3	11.5° → 6000
				← 295°	← 295° 2500
					1600
					3.00° TCH 52
					0.7 0.7 3.3 NM 6.4 NM
CATEGORY	A	B	C	D	
S-LOC 29	540-1 508 (500-1)				
<b>C</b> CIRCLING	540-1	500 (500-1)	820-2 1/4	820-2 1/2	
			780 (800-2 1/4)	780 (800-2 1/2)	

AK, 05 SEP 2024 to 31 OCT 2024

AK, 05 SEP 2024 to 31 OCT 2024