

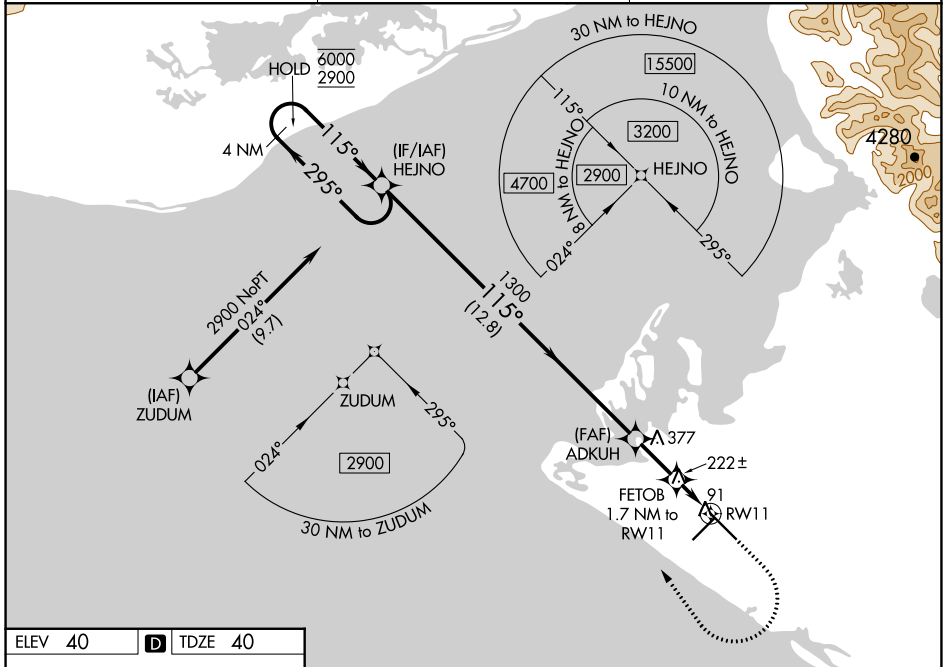
WAAS CH <b>86414</b> <b>W11A</b>	APP CRS <b>115°</b>	Rwy Idg TDZE Apt Elev	<b>7732</b> <b>40</b> <b>40</b>
--	------------------------	-----------------------------	---------------------------------------

# RNAV (GPS) RWY 11

YAKUTAT (YAK) (PAYA)

RNP APCH - GPS.	MALSR	MISSED APPROACH: Climb to 600 then climbing right turn to 2900 direct HEJNO and hold.
<p><b>⚠</b> Circling Rwy 20 NA at night. When Yakutat altimeter setting not received, procedure NA. For uncompensated Baro-VNAV systems, LNAV/VNAV NA below -1.6° C or above 54° C.</p>		

ASOS <b>135.75</b>	ANCHORAGE CENTER <b>119.0 263.1</b>	JUNEAU RADIO <b>123.6 (CTAF) 0</b>
-----------------------	--	---------------------------------------



	<table border="1"> <tr> <td>600</td> <td>2900</td> <td>HEJNO</td> </tr> <tr> <td>↑</td> <td>↷</td> <td>✧</td> </tr> </table>				600	2900	HEJNO	↑	↷	✧																			
	600	2900	HEJNO																										
↑	↷	✧																											
<table border="1"> <tr> <td>GP 3.00°</td> <td>TCH 53</td> <td>12.8 NM</td> <td>2.1 NM</td> <td>0.5</td> <td>1.2 NM</td> </tr> </table>	GP 3.00°	TCH 53	12.8 NM	2.1 NM	0.5	1.2 NM																							
GP 3.00°	TCH 53	12.8 NM	2.1 NM	0.5	1.2 NM																								
<table border="1"> <tr> <th>CATEGORY</th> <th>A</th> <th>B</th> <th>C</th> <th>D</th> </tr> <tr> <td>LPV DA</td> <td colspan="2">240/24</td> <td colspan="2">200 (200-½)</td> </tr> <tr> <td>LNAV/VNAV DA</td> <td colspan="2">445/50</td> <td colspan="2">405 (500-1)</td> </tr> <tr> <td>LNAV MDA</td> <td>480/24</td> <td>440 (500-½)</td> <td>480/40</td> <td>440 (500-¾)</td> </tr> <tr> <td><b>C</b> CIRCLING</td> <td>520-1 480 (500-1)</td> <td>540-1 500 (500-1)</td> <td>820-2¼ 780 (800-2¼)</td> <td>820-2½ 780 (800-2½)</td> </tr> </table>	CATEGORY	A	B	C	D	LPV DA	240/24		200 (200-½)		LNAV/VNAV DA	445/50		405 (500-1)		LNAV MDA	480/24	440 (500-½)	480/40	440 (500-¾)	<b>C</b> CIRCLING	520-1 480 (500-1)	540-1 500 (500-1)	820-2¼ 780 (800-2¼)	820-2½ 780 (800-2½)				
CATEGORY	A	B	C	D																									
LPV DA	240/24		200 (200-½)																										
LNAV/VNAV DA	445/50		405 (500-1)																										
LNAV MDA	480/24	440 (500-½)	480/40	440 (500-¾)																									
<b>C</b> CIRCLING	520-1 480 (500-1)	540-1 500 (500-1)	820-2¼ 780 (800-2¼)	820-2½ 780 (800-2½)																									

YAKUTAT, ALASKA  
Amdt 5 08SEP22

59°30'N-139°40'W

# YAKUTAT (YAK) (PAYA)

## RNAV (GPS) RWY 11

AK, 05 SEP 2024 to 31 OCT 2024

AK, 05 SEP 2024 to 31 OCT 2024