

LOC/DME F-ADQ <b>110.9</b> Chan <b>46</b>	APP CRS <b>258°</b>	Rwy Idg <b>7534</b> TDZE <b>32</b> Apt Elev <b>79</b>
---	------------------------	---

# ILS Y or LOC Y RWY 26

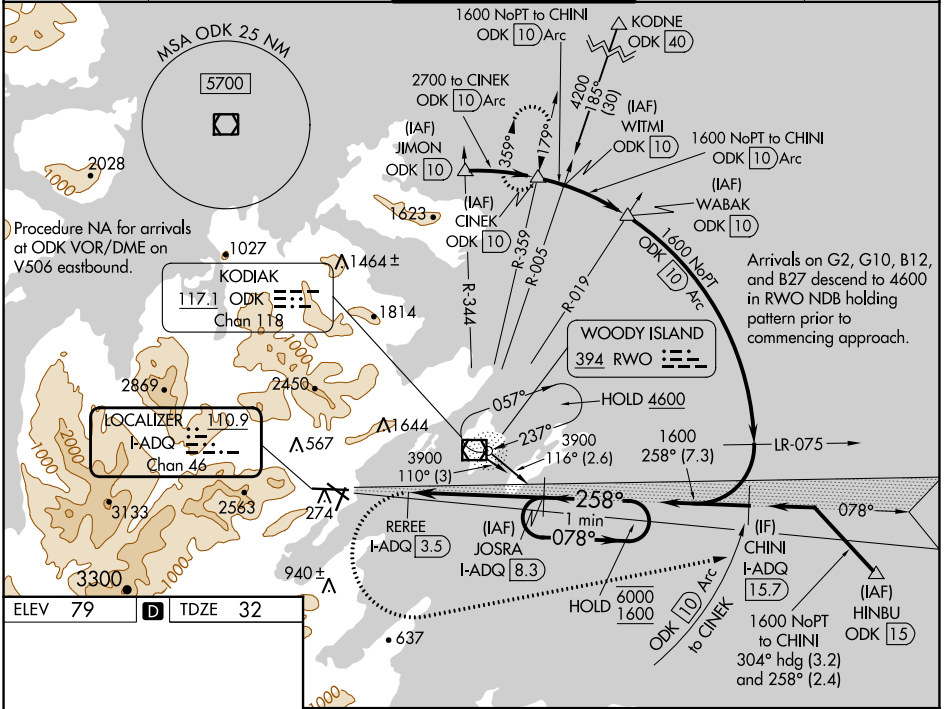
KODIAK (ADQ)(PADQ)

DME required.

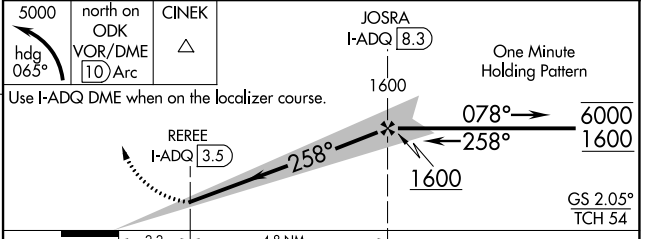
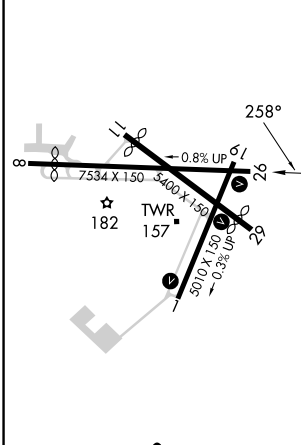
**▼** Circling NA north of Rwy 8-26 and west of Rwy 1-19. Circling Rwy 1 NA at night.  
**▲** Circling NA to Rws 8, 11 and 19. Rapidly rising terrain north, west, and south of airport. ILS unusable from 2 DME inbound. When advised by ATC of tall ships in the harbor, procedure NA.

**MISSED APPROACH:** Climbing left turn to 5000 on heading 065° to intercept ODK VOR/DME 10 DME Arc. Arc north to CINEK/ODK 10 DME and hold

ATIS <b>134.45</b>	ANCHORAGE CENTER <b>125.1 281.4</b>	KODIAK TOWER* <b>119.8 (CTAF) 239.0</b>	GND CON <b>121.9</b>	UNICOM <b>122.8</b>
-----------------------	--	--	-------------------------	------------------------



ELEV 79	<b>D</b>	TDZE 32
---------	----------	---------



CATEGORY	A	B	C	D
S-ILS 26	636-3	604 (600-3)		824-3 792 (800-3)
S-LOC 26	640-2½	608 (600-2½)		1060-3 1028 (1000-3)
<b>C</b> CIRCLING	660-2½ 581 (600-2½)	720-2½ 641 (700-2½)	1140-3 1061 (1100-3)	NA

AK, 05 SEP 2024 to 31 OCT 2024

AK, 05 SEP 2024 to 31 OCT 2024