

# NDB/DME RWY 2

NDB CZF <b>275</b>	APCH CRS <b>051°</b>	Rwy Idg TDZE Arprt Elev <b>3955</b> <b>444</b> <b>467</b>	[USAF]	CAPE ROMANZOF LRRS (PACZ)
-----------------------	-------------------------	--	--------	---------------------------

▼ Night operations not authorized. Helicopter vis reduction below 1 mile not authorized. Circling not authorized.

† MISSED APPROACH: Climb left turn to 3600 to intercept CZF NDB 231° bearing to MOTRS/12 DME and hold.

ANCHORAGE CENTER <b>124.5 266.8</b>	UNICOM <b>126.2 (CTAF)</b>	KENAI RADIO <b>122.1</b>
--	-------------------------------	-----------------------------

CAUTION: Final Approach Course intersects extended runway centerline 4520' prior to threshold.

† Missed approach requires use of RNAV or ATC RADAR monitoring.

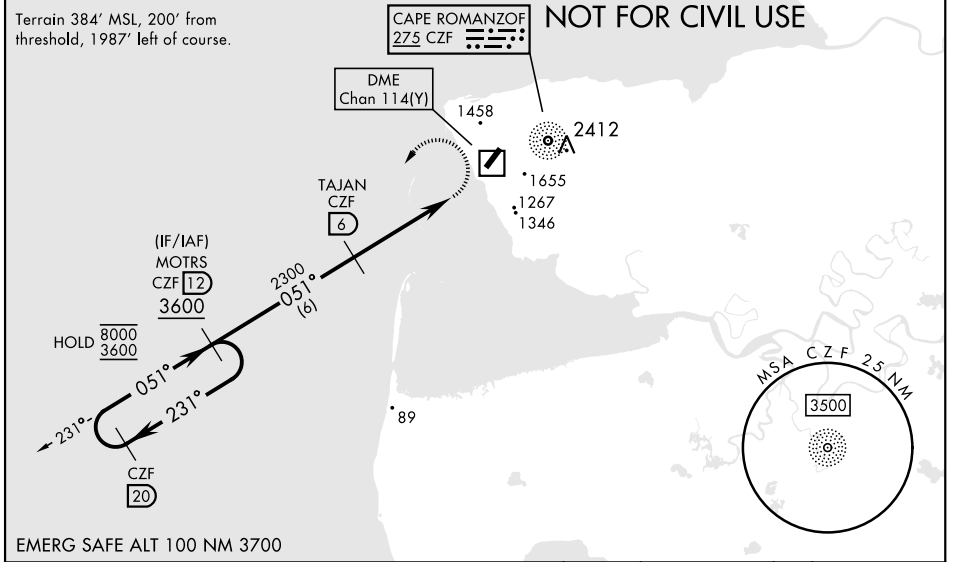
Successful go-around improvable if initiated beyond the MAP.

Uncontrolled Airspace below 700' AGL within 7 NM of Cape Romanzof airport.

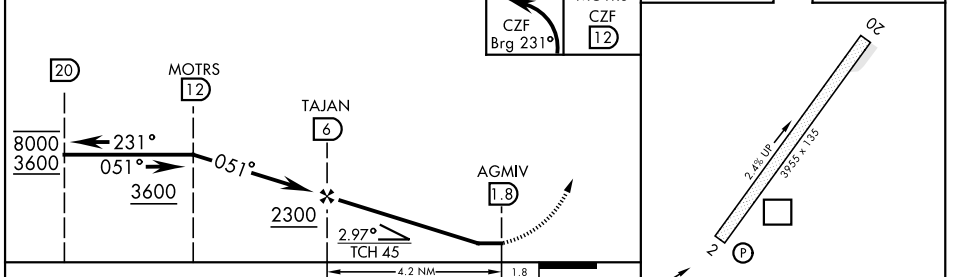
Terrain 384' MSL, 200' from threshold, 1987' left of course.

**MILITARY CERTIFIED  
AIRCREWS OR AUTHORIZED  
CONTRACT AIRCRAFT ONLY**

**NOT FOR CIVIL USE**



EMERG SAFE ALT 100 NM 3700



ELEV	467	TDZE	444
CZF	Brg 231°	MOTRS CZF	12
CATEGORY	A	B	C
S-2	1580-2½	1136 (1200-2½)	1580-3 1136 (1200-3)
CIRCLING	NOT AUTHORIZED		

CAPE ROMANZOF, ALASKA 61°47'N-166°02'W CAPE ROMANZOF LRRS (PACZ)

# NDB/DME RWY 2

AK, 05 SEP 2024 to 31 OCT 2024

AK, 05 SEP 2024 to 31 OCT 2024

REIL Rwy 2  
Land Rwy 2 takeoff Rwy 20