

CAPE ROMANZOF, ALASKA

RNAV (GPS) RWY 2

APCH CRS	Rwy Idg	3955
021°	TDZE	444
	Arprt Elev	467

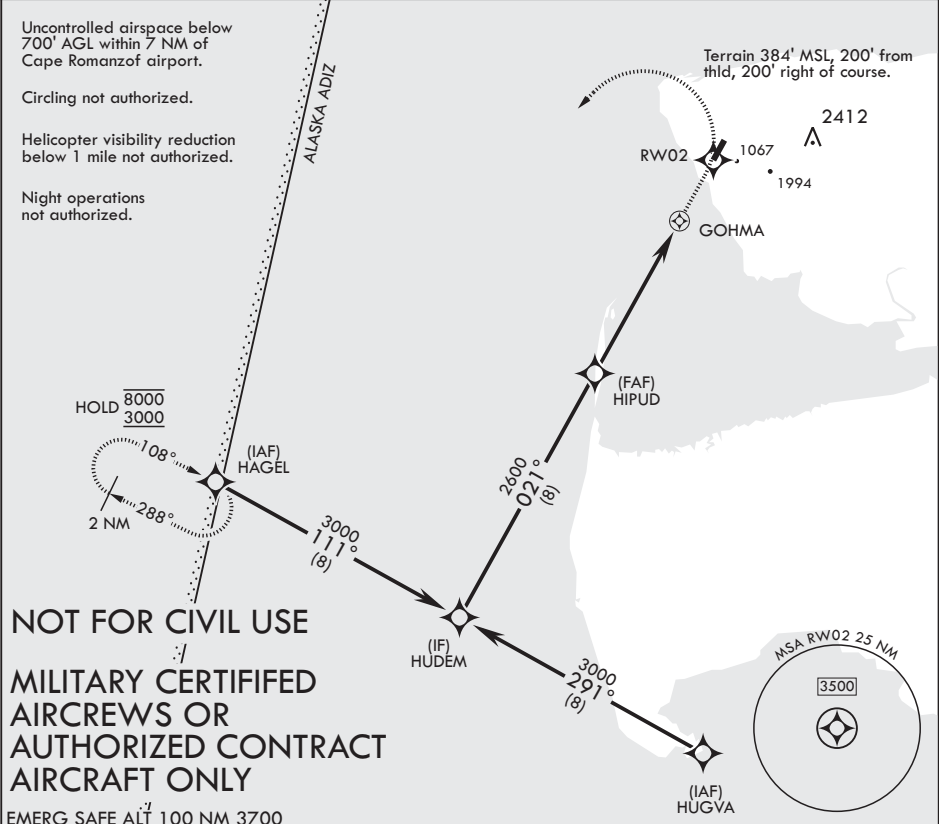
- (USAF)

CAPE ROMANZOF LRRS (PACZ)

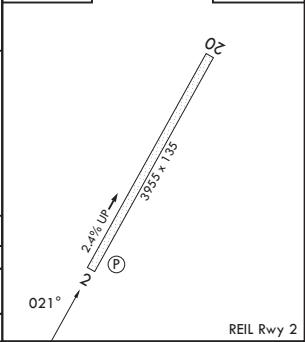
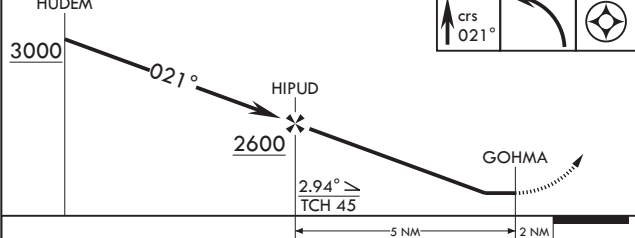
RNP APCH-GPS

MISSED APPROACH: Climb to 1500 then climbing left turn to 3000 direct HAGEL and hold.

ANCHORAGE CENTER 124.5 266.8	CTAF 126.2	KENAI RADIO 122.1
--	----------------------	-----------------------------



HUDEM	1500	3000	HAGEL	ELEV 467	TDZE 444
-------	------	------	-------	----------	----------



CATEGORY	A	B	C	D
LNAV MDA	1540-2½	1095 (1100-2½)	1540-3 1095 (1100-3)	NA
CIRCLING	NOT AUTHORIZED			

CAPE ROMANZOF, ALASKA

61°47'N - 166°02'W

CAPE ROMANZOF LRRS (PACZ)

Orig 11JUL24

RNAV (GPS) RWY 2

AK, 05 SEP 2024 to 31 OCT 2024

AK, 05 SEP 2024 to 31 OCT 2024