

NORTH, SOUTH CAROLINA

RNAV (GPS) RWY 6

APCH CRS 061°	Rwy Idg 9003 TDZE 281 Arprt Elev 321
-------------------------	---

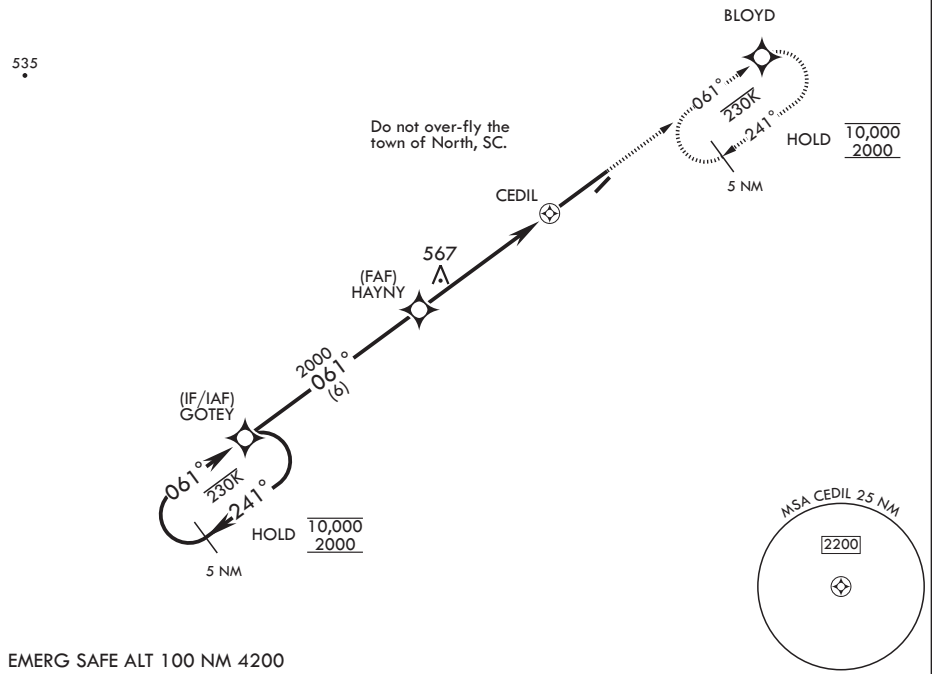
AL-3017 (USAF)

NORTH AF AUX (KXNO)

RNP APCH.	MISSED APPROACH: Climb to 2000 direct BLOYD and hold.
-----------	---

ASOS 118.525	COLUMBIA APP CON/DEP CON 124.15 338.2	LZ/DZ OPS FAC 120.475 235.775
------------------------	---	---

CAUTION: Uncontrolled airspace below 700 ft AGL.



EMERG SAFE ALT 100 NM 4200

		2000 	ELEV 321	TDZE 281	
		Rwy 6 Idg 9003' Rwy 24 Idg 8999'			
CATEGORY	A	B	C	D	E
LNAV MDA	880-1	599 (600-1)	880-1 $\frac{3}{4}$	599	(600-1 $\frac{3}{4}$)
CIRCLING*	940-1	619 (700-1)	940-1 $\frac{3}{4}$	619	(700-1 $\frac{3}{4}$)
			1400-3	1079	(1100-3)

NORTH, SOUTH CAROLINA
Amdt 3 29DEC22

33°37'N - 81°05'W

NORTH AF AUX (KXNO)

RNAV (GPS) RWY 6

SE-2, 05 SEP 2024 to 03 OCT 2024

SE-2, 05 SEP 2024 to 03 OCT 2024