

WAAS CH 61340 W36A	APP CRS 002°	Rwy Idg TDZE 187 Apt Elev 188
--	------------------------	---

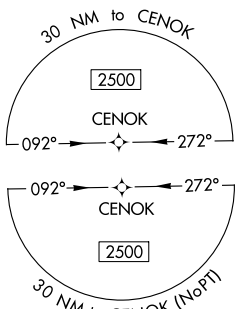
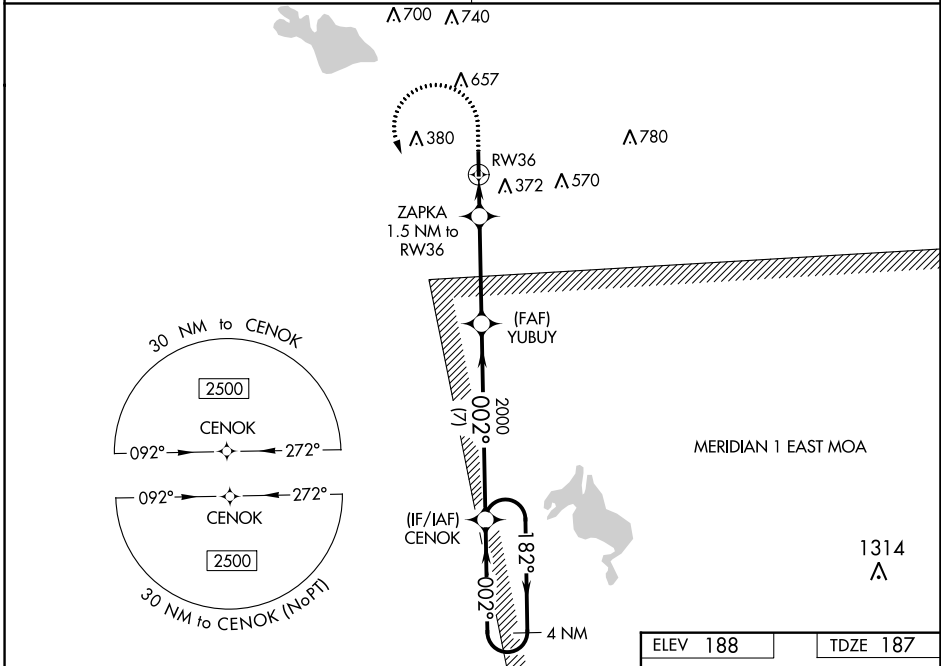
RNAV (GPS) RWY 36

COLUMBUS-LOWNDES COUNTY (UBS)

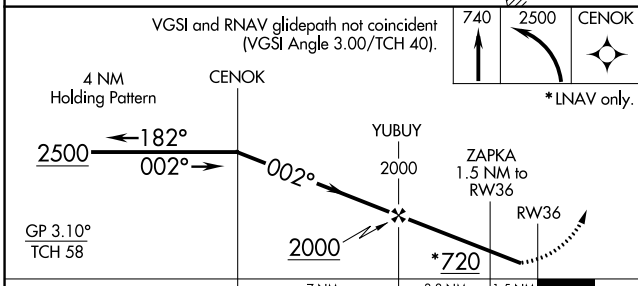
RNP APCH.
 ▼ Rwy 36 helicopter visibility reduction below 3/4 SM NA. Use Columbus AFB altimeter setting; when not received, use Golden Triangle Rgnl altimeter setting and increase all DA 5 feet and all MDA 20 feet, increase LPV and LNAV/VNAV all Cats visibilities to 1 1/2 SM. Baro-VNAV NA.
 ▲ NA

MISSED APPROACH: Climb to 740 then climbing left turn to 2500 direct CENOK and hold.

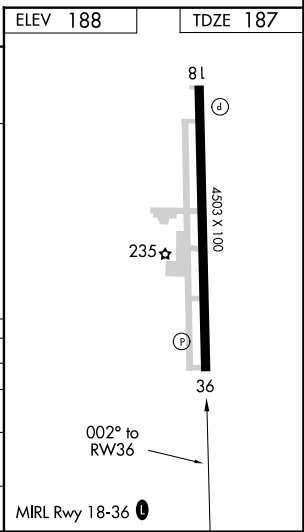
COLUMBUS APP CON *	UNICOM
135.6 323.275	122.8 (CTAF) 0



VGSI and RNAV glidepath not coincident (VGSI Angle 3.00/TCH 40).



CATEGORY	A	B	C	D
LPV DA		527-1	340 (400-1)	
LNAV/VNAV DA		526-1	339 (400-1)	
LNAV MDA	600-1 413 (500-1)		600-1 1/8 413 (500-1 1/8)	
CIRCLING	760-1	780-1	1040-2 1/2	1040-2 3/4
	572 (600-1)	592 (600-1)	852 (900-2 1/2)	852 (900-2 3/4)



SC-4, 05 SEP 2024 to 03 OCT 2024

SC-4, 05 SEP 2024 to 03 OCT 2024