

LOC I-ESF 111.5 Chan 52	APP CRS 270°	Rwy Idg 5998 TDZE 92 Apt Elev 112
---	------------------------	--

ILS or LOC/DME RWY 27

ESLER RGNL (E/SF)

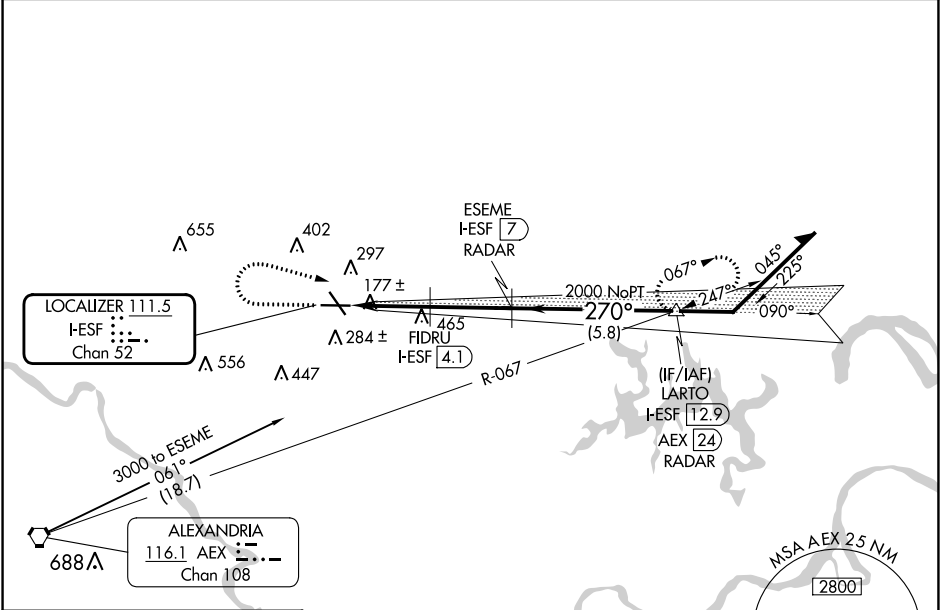
RADAR or DME required.

NA Circling Rwy 14, 32 NA at night. VDP NA with Alexandria Intl altimeter setting. When local altimeter not received, use Alexandria Intl altimeter setting and increase DA to 327 feet; increase all MDA to 40 feet and Circling visibility Cat D ¼ SM. For inop MALSRS, increase S-LOC 27 Cat C/D visibility to 1 SM.



MISSED APPROACH: Climb to 1500 then climbing right turn to 3000 on heading 120° and on AEX VORTAC R-067 to LARTO/AEX 24.1 DME/RADAR and hold.

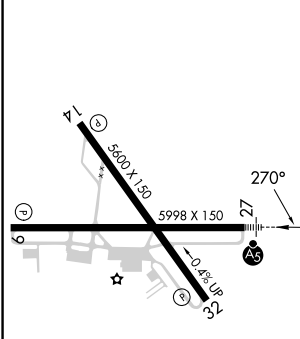
ESF ASOS 119.425	POLK APP CON 125.4 254.8	UNICOM 122.8 (CTAF) 0
----------------------------	------------------------------------	--



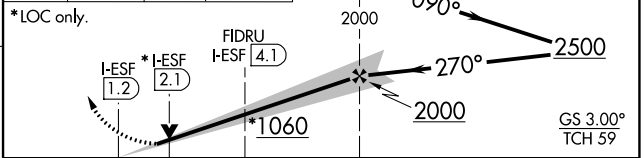
SC-4, 05 SEP 2024 to 03 OCT 2024

SC-4, 05 SEP 2024 to 03 OCT 2024

ELEV 112	TDZE 92
-----------------	----------------



1500	3000	AEX R-067	LARTO AEX [24.1] RADAR	ESEME I-ESF [7] RADAR	Remain within 10 NM
------	------	-----------	------------------------	-----------------------	---------------------



CATEGORY	A	B	C	D
S-ILS 27	292-½ 200 (200-½)			
S-LOC 27	440-½ 348 (400-½)	440-⅝ 348 (400-⅝)		
CIRCLING	600-1 488 (500-1)	740-1¾ 628 (700-1¾)		760-2 648 (700-2)

REIL Rws 9, 14 and 32 **0**
 MIRL Rwy 14-32 **0**
 HIRL Rwy 9-27 **0**

ILS or LOC/DME RWY 27

ESLER RGNL (E/SF)