

WAAS CH 77617 W09A	APP CRS 090°	Rwy Idg 5998 TDZE 96 Apt Elev 112
--	------------------------	--

RNAV (GPS) RWY 9

ESLER RGNL (E/SF)

RNP APCH-GPS

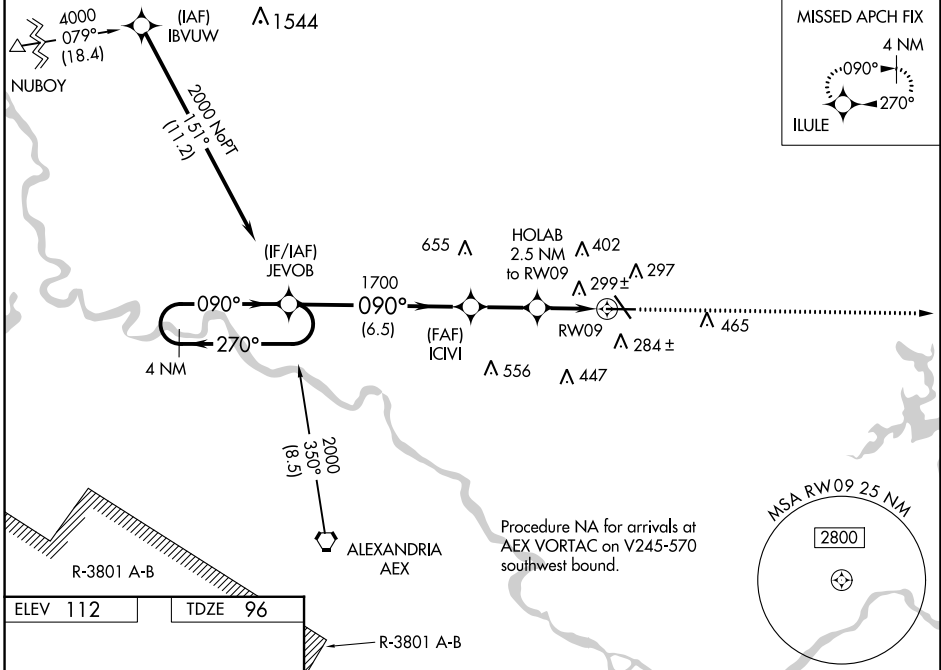
⚠ Circling Rwy 14, 32 NA at night. Baro-VNAV and VDP NA when using Alexandria Intl altimeter setting. For uncompensated Baro-VNAV systems, LNAV/VNAV NA below -6°C or above 54°C. When local altimeter setting not received, use Alexandria Intl altimeter setting; increase LPV DA to 331 feet; increase LNAV/VNAV DA to 644 feet and all visibility ¼ SM; increase all MDAs 40 feet and Circling visibility Cat D ¼.

MISSED APPROACH: Climb to 3000 direct ILULU and hold.

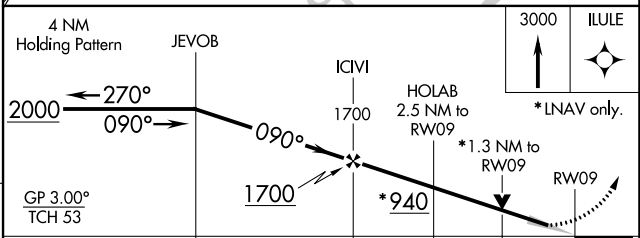
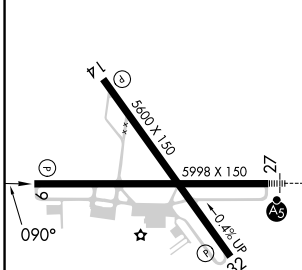
ESF ASOS
119.425

POLK APP CON
125.4 254.8

UNICOM
122.8 (CTAF) 0



ELEV 112	TDZE 96
----------	---------



CATEGORY	A	B	C	D
LPV DA		296-3/4	200 (200-3/4)	
LNAV/VNAV DA		609-13/8	513 (500-13/8)	
LNAV MDA	560-1	464 (500-1)	560-13/8	464 (500-13/8)
CIRCLING	600-1	488 (500-1)	740-13/4	760-2
			628 (700-13/4)	648 (700-2)

REIL Rws 9, 14 and 32 **Ⓛ**
MIRL Rwy 14-32 **Ⓛ**
HIRL Rwy 9-27 **Ⓛ**

SC-4, 05 SEP 2024 to 03 OCT 2024

SC-4, 05 SEP 2024 to 03 OCT 2024