

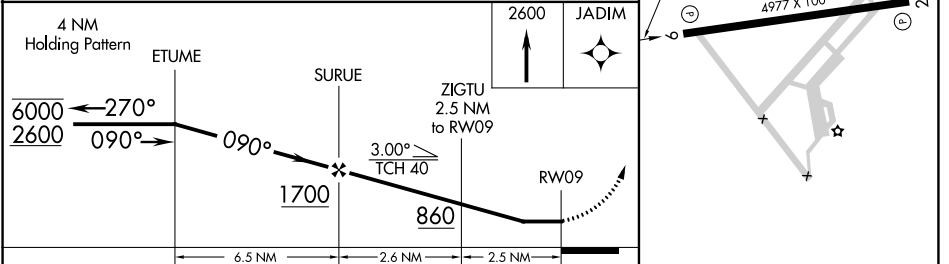
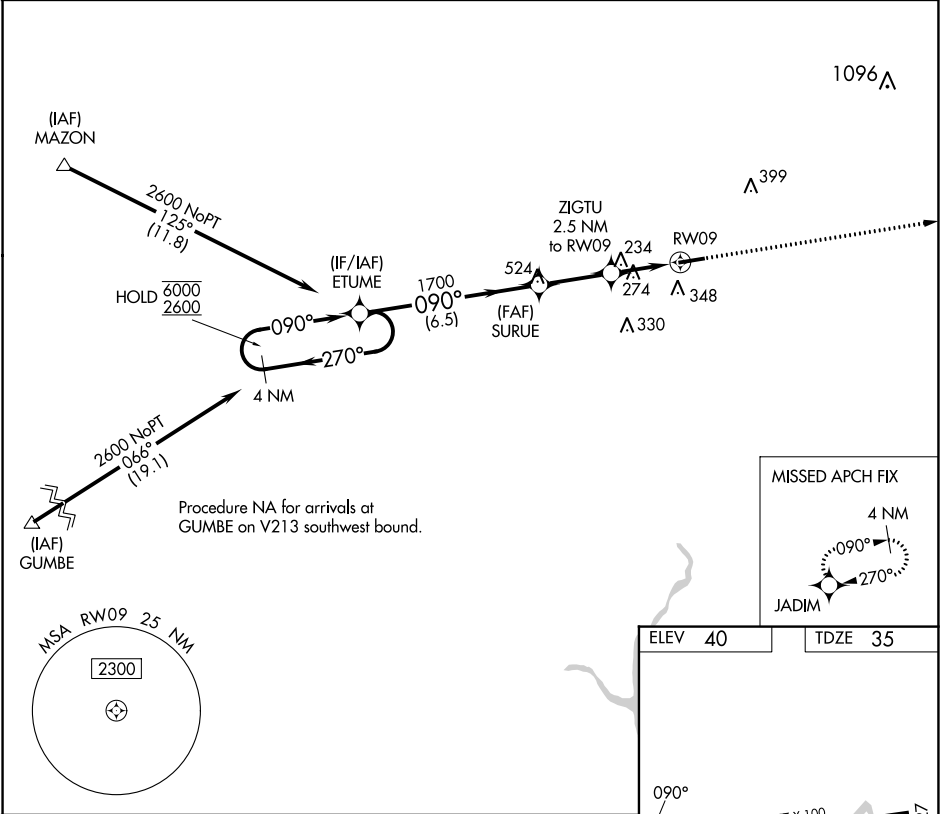
APP CRS	Rwy Idg	4977
090°	TDZE	35
	Apt Elev	40

RNAV (GPS) RWY 9

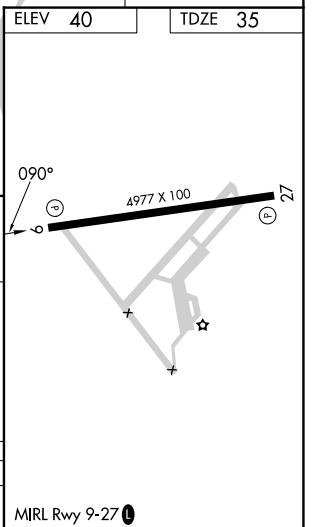
FRANKLIN RGNL (F'KN)

RNP APCH - GPS.	MISSED APPROACH: Climb to 2600 direct JADIM and hold.
<p>Procedure NA at night. Rwy 9 helicopter visibility reduction below 1 SM NA.</p>	

AWOS-3PT 124.675	NORFOLK APP CON 127.9 269.425	UNICOM 122.8 (CTAF) 1
----------------------------	---	---------------------------------



CATEGORY	A	B	C	D
LNNAV MDA	580-1	545 (600-1)	580-1 $\frac{5}{8}$	545 (600-1 $\frac{5}{8}$)



NE-3, 05 SEP 2024 to 03 OCT 2024

NE-3, 05 SEP 2024 to 03 OCT 2024