

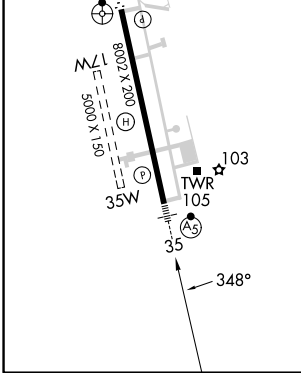
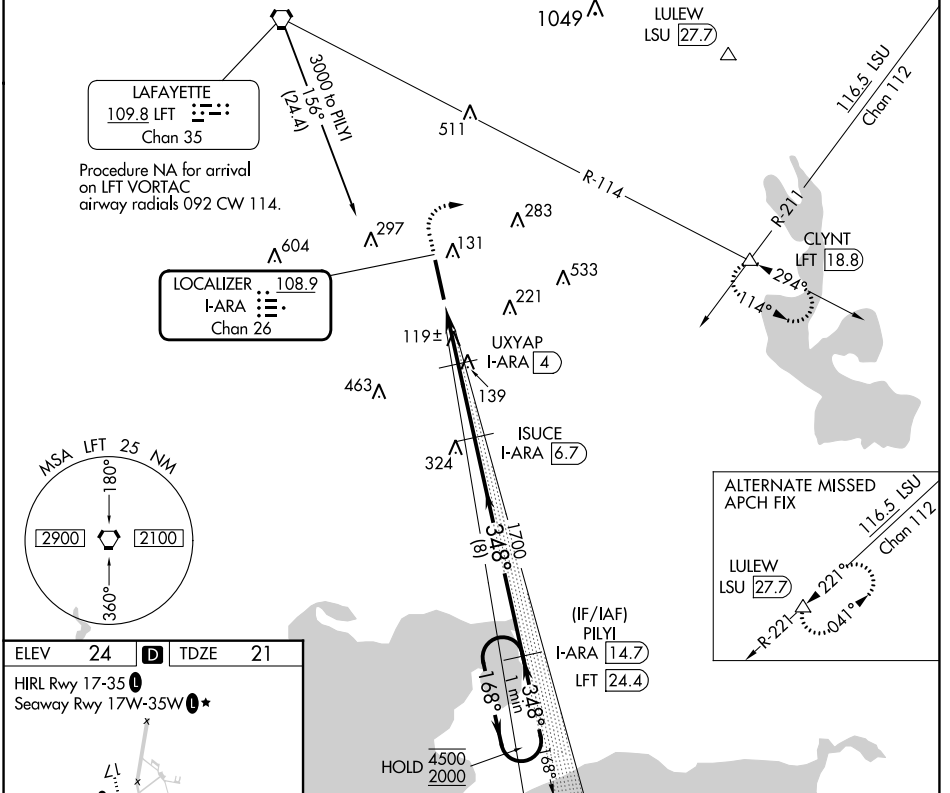
LOC/DME I-ARA 108.9 Chan 26	APP CRS 348°	Rwy Idg 8002 TDZE 21 Apt Elev 24
---	------------------------	---

ILS or LOC RWY 35

ACADIANA RGNL (A.R.A.)

DME required for procedure entry. DME required for LOC only.		MALSR AS	MISSED APPROACH: Climb to 800 then climbing right turn to 2000 on heading 080° and LFT R-114 to CLYNT INT/LFT 18.8 DME and hold.
<p>∇ Circling NA to Rwy's 17W and 35W. For inop ALS increase S-ILS 35 ⚠ Cat E visibility to ¾ SM and S-LOC 35 Cats C/D/E visibility to 1 ½ SM.</p>			

ASOS 133.325	LAFAYETTE APP CON* 121.1 268.7	ACADIANA TOWER* 125.0 (CTAF) 239.3	GND CON 121.7	CLNC DEL 121.7	CLNC DEL 118.05 (when twr closed)	UNICOM 122.95	0* 122.7
------------------------	--	--	-------------------------	--------------------------	--	-------------------------	---------------------------



ELEV 24	TDZE 21	CLYNT I-ARA 14.7		PILYI I-ARA 14.7		One Minute Holding Pattern	
800	2000	LFT R-114	ISUCE I-ARA 6.7	168° → 4500			
*LOC only.		I-ARA 1.6	*I-ARA 2.6	UXYAP I-ARA 4	1700	← 348° 2000	
HOLD 4500 / 2000		480*		348°		GS 3.00° TCH 5T	
1 NM		1.4 NM		2.7 NM		8 NM	
CATEGORY	A	B	C	D	E		
S-ILS 35	221-½					200 (200-½)	
S-LOC 35	440-½ 419 (500-½)		440-¾ 419 (500-¾)				
CIRCLING	440-1 416 (500-1)	480-1 456 (500-1)	600-1½ 576 (600-1½)	680-2 656 (700-2)	900-3 876 (900-3)		

SC-4, 05 SEP 2024 to 03 OCT 2024

SC-4, 05 SEP 2024 to 03 OCT 2024