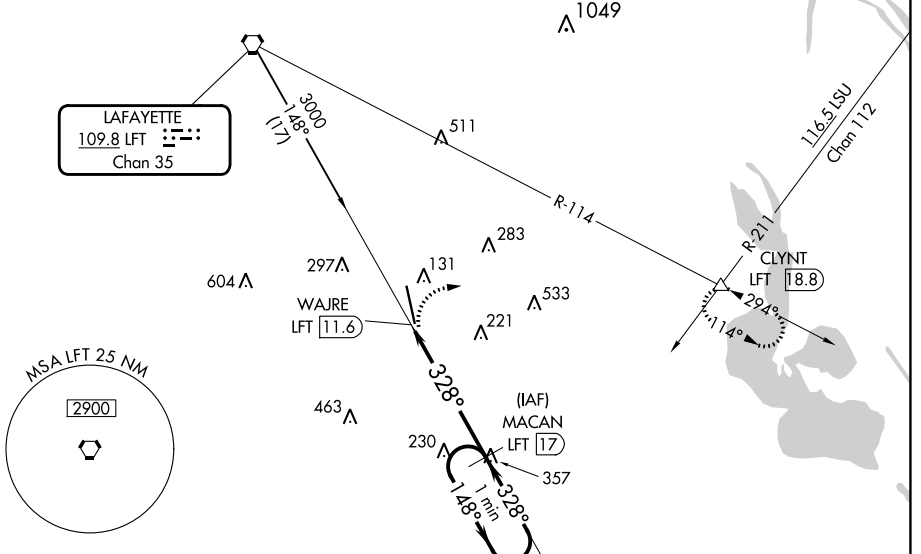


VORTAC LFT 109.8	APP CRS 328°	Rwy Idg TDZE Apt Elev	8002 21 24
Chan 35			

VOR RWY 35
ACADIANA RGNL (A.R.A.)

<p>Circling NA to Rwy's 17W and 35W. DME required. Inop table does not apply.</p>		<p>MALS</p>	<p>MISSED APPROACH: Climbing right turn to 2000 on heading 080° and LFT R-114 to CLYNT INT/LFT 18.8 DME and hold.</p>				
ASOS 133.325	LAFAYETTE APP CON * 121.1 268.7	ACADIANA TOWER * 125.0 (CTAF) 0 239.3	GND CON 121.7	CLNC DEL 121.7	CLNC DEL 118.05 (when twr closed)	UNICOM 122.95	0 * 122.7

DME REQUIRED



SC-4, 05 SEP 2024 to 03 OCT 2024

SC-4, 05 SEP 2024 to 03 OCT 2024

ELEV 24	D	TDZE 21
HIRL Rwy 16-34		
Seaway Rwy 16W-34W		

<p>2000 hdg 080°</p>	<p>LFT R-114</p>	<p>CLYNT </p>	<p>MACAN LFT 17</p>	<p>One Minute Holding Pattern</p>	
<p>328°</p>		<p>WAJRE LFT 11.6</p>	<p>LFT 13</p>	<p>1800</p>	
<p>1.5</p>		<p>4 NM</p>		<p>1800</p>	
<p>3.00°</p>	<p>TCH 52</p>	<p>148° →</p>			
<p>← 328°</p>			<p>1800</p>		
<p>CATEGORY</p>	<p>A</p>	<p>B</p>	<p>C</p>	<p>D</p>	<p>E</p>
<p>S-35</p>	<p>540-1/2</p>	<p>519 (600-1/2)</p>	<p>540-1 3/8</p>	<p>519 (600-1 3/8)</p>	
<p> CIRCLING</p>	<p>540-1</p>	<p>516 (600-1)</p>	<p>600-1 1/2</p>	<p>680-2</p>	<p>900-3</p>
			<p>576 (600-1 1/2)</p>	<p>656 (700-2)</p>	<p>876 (900-3)</p>