

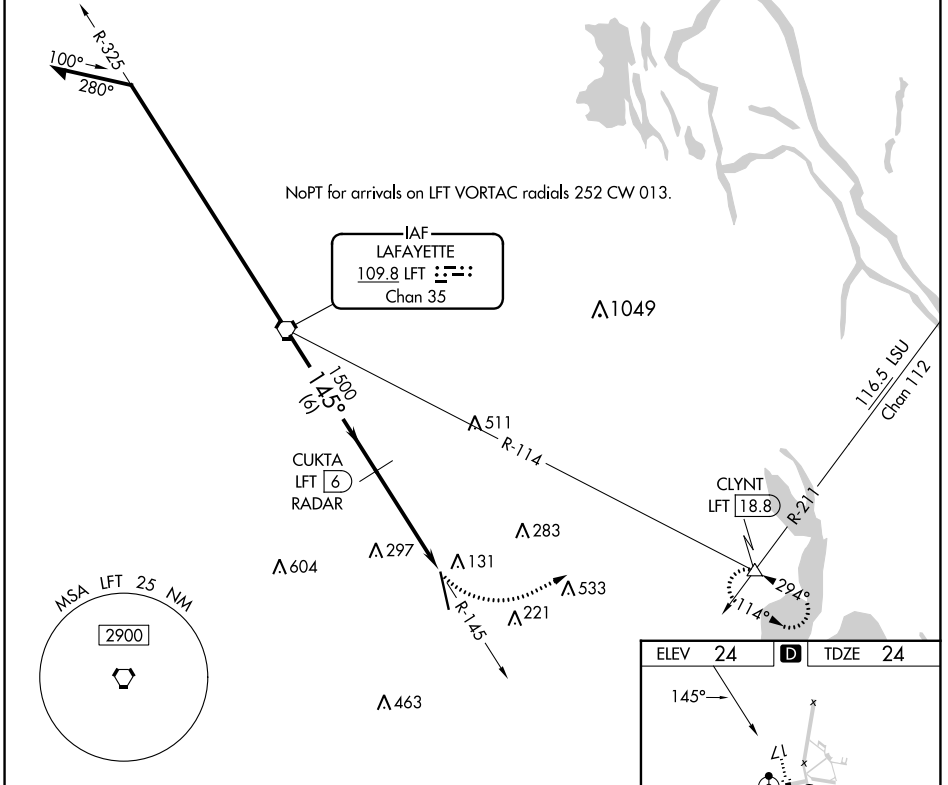
VORTAC LFT 109.8 Chan 35	APP CRS 145°	Rwy Idg TDZE 24 Apt Elev 24	8002
--	------------------------	---	-------------

VOR or TACAN RWY 17

ACADIANA RGNL (A.R.A.)

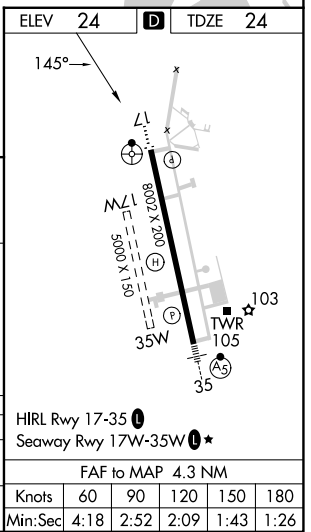
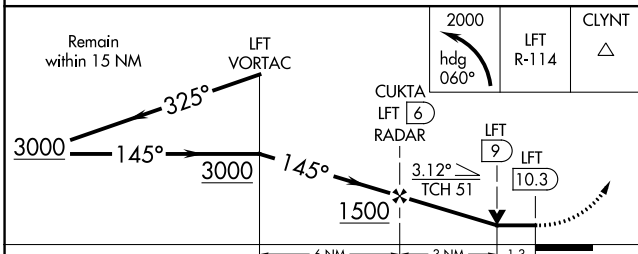
<p>▼ Circling NA to Rwy's 17W and 35W. ▲ DME or RADAR required. ▲ For inop ALS, increase S-17 Cat E visibility to 1½ mile.</p>	<p>ODALS ⬆️ ⋮</p>	<p>MISSED APPROACH: Climbing left turn to 2000 on heading 060° and LFT VORTAC R-114 to CLYNT INT/18.8 DME and hold.</p>
--	---------------------------	---

ASOS 133.325	LAFAYETTE APP CON* 121.1 268.7	ACADIANA TOWER* 125.0 (CTAF) 0 239.3	GND CON 121.7	CLNC DEL 121.7	CLNC DEL 118.05 (when twr closed)	UNICOM 122.95	0* 122.7
------------------------	--	--	-------------------------	--------------------------	--	-------------------------	---------------------------



SC-4, 05 SEP 2024 to 03 OCT 2024

SC-4, 05 SEP 2024 to 03 OCT 2024



CATEGORY	A	B	C	D	E
S-17	500-¾ 476 (500-¾)		500-1¼ 476 (500-1¼)		
C CIRCLING	500-1 476 (500-1)		600-1½ 576 (600-1½)	680-2 656 (700-2)	900-3 876 (900-3)

HIRL Rwy 17-35

Seaway Rwy 17W-35W

FAF to MAP 4.3 NM

Knots	60	90	120	150	180
Min:Sec	4:18	2:52	2:09	1:43	1:26