

APP CRS	Rwy Idg	4100
331°	TDZE	750
	Apt Elev	750

RNAV (GPS) RWY 33

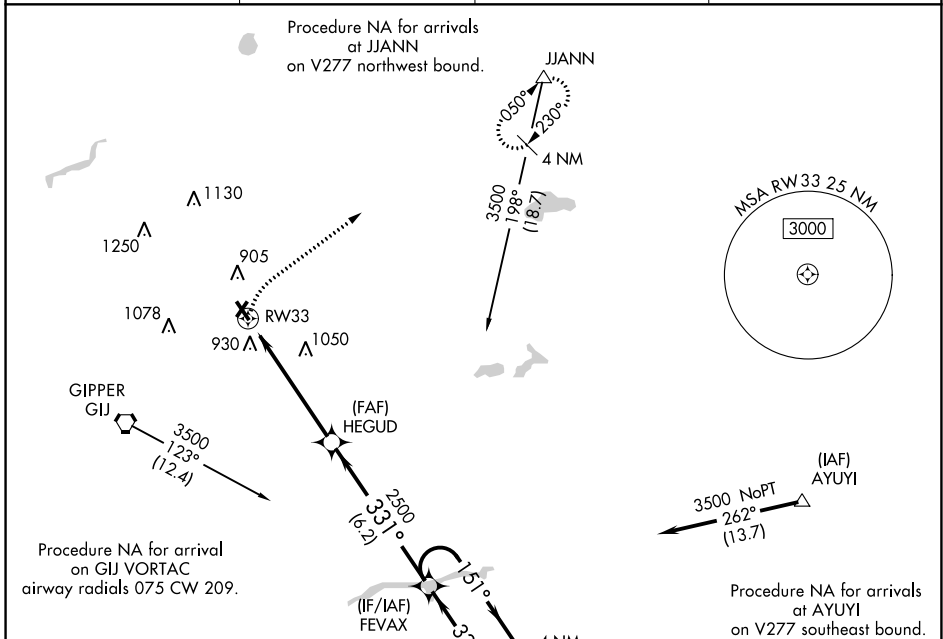
JERRY TYLER MEML (3TR)

RNP APCH.

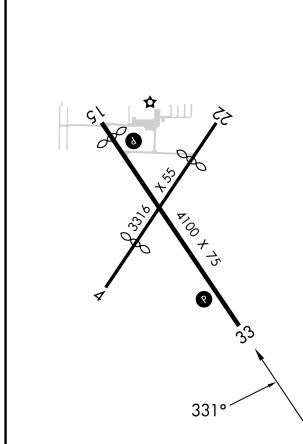
▼ Procedure NA at night. Rwy 33 helicopter visibility reduction below 1 SM NA.
 ▲ NA Use South Bend altimeter setting; when not received, use Elkhart altimeter setting; increase all MDA 20 feet and LNAV Cat C visibility 1/8 SM.

MISSED APPROACH: Climbing right turn to 3000 direct JJANN and hold.

SBN ASOS	SOUTH BEND APP CON*	GCO	UNICOM
120.675	118.55 257.8	121.725	122.8 (CTAF) 0



ELEV 750	TDZE 750
MIRL Rwy 15-33	REIL Rwys 15 and 33



3000	JJANN	Visual Segment - Obstacles.	4 NM	
	▲		FEVAX Holding Pattern	
		HEGUD	151°	
		RW33	331°	
		2500	6000	
		3500		
		5.4 NM	6.2 NM	
CATEGORY	A	B	C	D
LNAV MDA	1320-1	570 (600-1)	1320-1½ 570 (600-1½)	NA
CIRCLING	1320-1	570 (600-1)	1460-2 710 (800-2)	NA

EC-1, 05 SEP 2024 to 03 OCT 2024

EC-1, 05 SEP 2024 to 03 OCT 2024