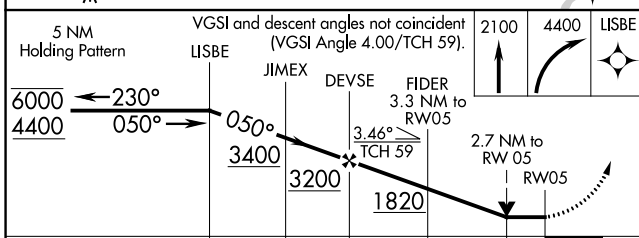
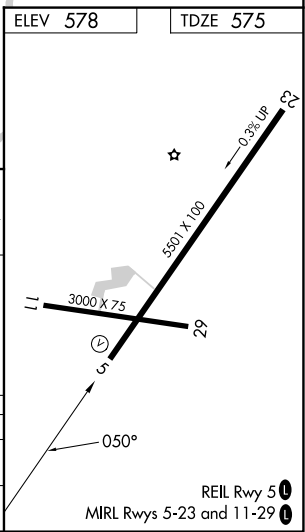
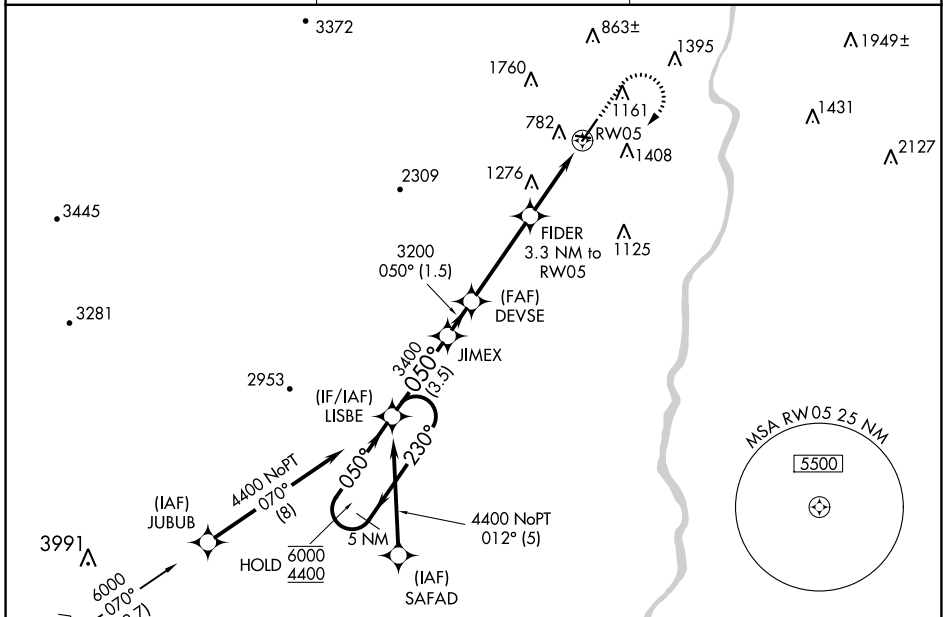


| | | |
|------------------------|-----------------------------|---|
| APP CRS 050° | Rwy Idg TDZE Apt Elev | 5501 575 578 |
|------------------------|-----------------------------|---|

RNAV (GPS) RWY 5
HARTNESS STATE (SPRINGFIELD) (V5F)

| | | |
|---|---------------------------------------|--|
| RNP APCH - GPS. | | MISSED APPROACH: Climb to 2100 then climbing right turn to 4400 direct LISBE and hold. |
| ⚠ Circling Rwy 11, 23, 29 NA at night. ⚠ Rwy 5 helicopter visibility reduction below 3/4 SM NA. ❄ -20°C | | |
| ASOS 121.425 | BOSTON CENTER 134.7 269.475 | UNICOM 122.8 (CTAF) 0 |



| CATEGORY | A | B | C | D |
|----------|---------------------------|---------------------------|--------|---------------|
| LNVA MDA | 1780-1¼ 1205 (1300-1¼) | 1780-1½ 1205 (1300-1½) | 1780-3 | 1205 (1300-3) |
| CIRCLING | 1780-1¼ 1202 (1300-1¼) | 1780-1½ 1202 (1300-1½) | 2600-3 | 2022 (2100-3) |

NE-1, 05 SEP 2024 to 03 OCT 2024

NE-1, 05 SEP 2024 to 03 OCT 2024