

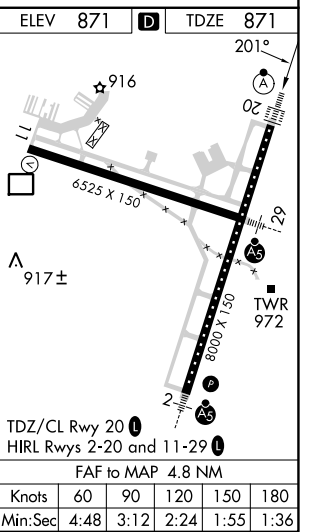
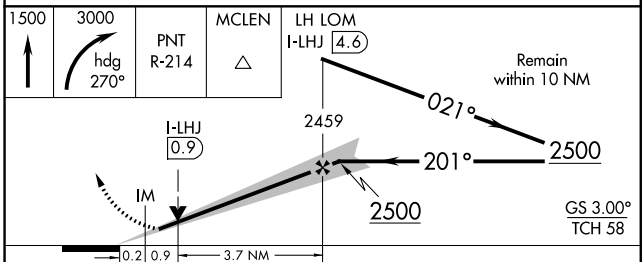
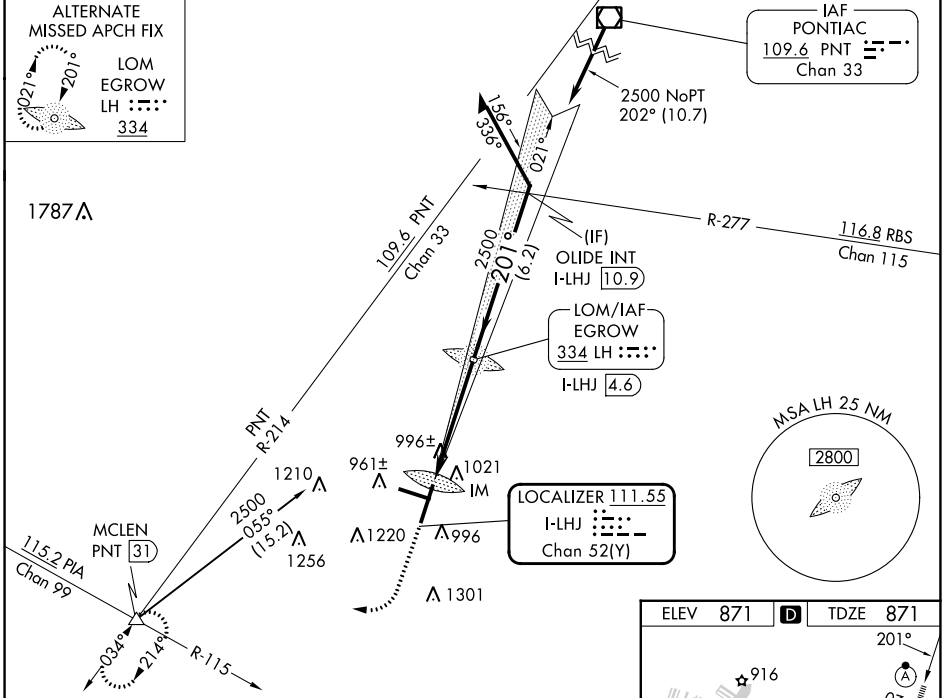
LOC/DME I-LHJ <b>111.55</b> Chan <b>52(Y)</b>	APP CRS <b>201°</b>	Rwy Idg TDZE Apt Elev	<b>8000</b> <b>871</b> <b>871</b>
---	------------------------	-----------------------------	---

# ILS or LOC RWY 20

CENTRAL IL RGNL/BLOOMINGTON-NORMAL (BMI)

	MISSED APPROACH: Climb to 1500 then climbing right turn to 3000 on heading 270° and on PNT VOR/DME R-214 to MCLN INT/PNT 31 DME and hold.			

ATIS <b>119.575</b>	SAINT LOUIS APP CON <b>128.725 256.9</b>	BLOOMINGTON TOWER ★ <b>124.6(CTAF) 269.575</b>	GND CON <b>121.65</b>	UNICOM <b>122.95</b>
------------------------	---	---	--------------------------	-------------------------



CATEGORY	A	B	C	D
S-ILS 20	1071/18		200 (200-½)	
S-LOC 20	1260/24	389 (400-½)	1260/35	389 (400-¾)
CIRCLING	1340-1	469 (500-1)	1620-2¼ 749 (800-2¼)	1620-2½ 749 (800-2½)

EC-3, 05 SEP 2024 to 03 OCT 2024

EC-3, 05 SEP 2024 to 03 OCT 2024