

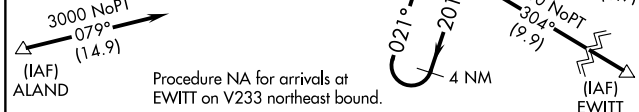
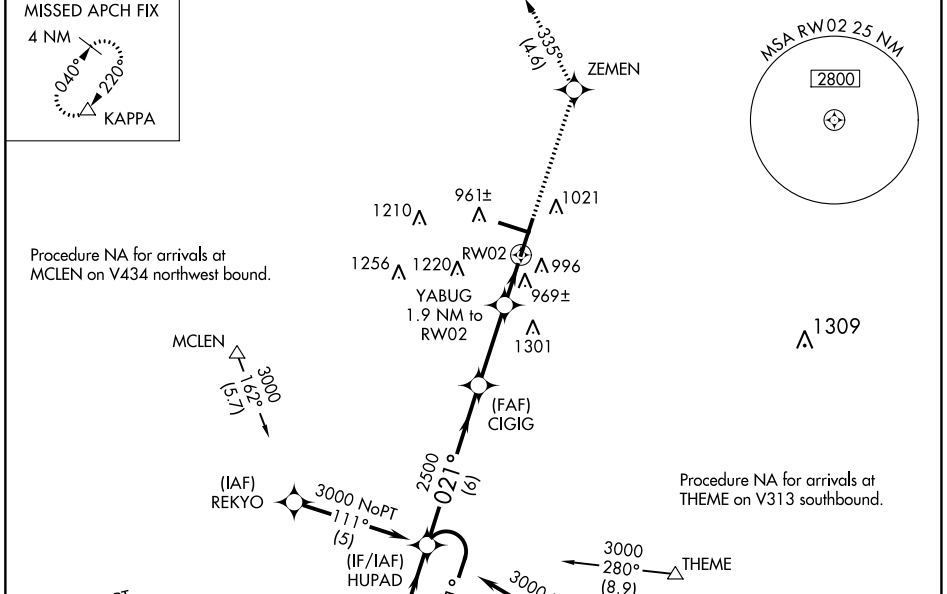
WAAS CH <b>56303</b> <b>W02A</b>	APP CRS <b>021°</b>	Rwy Idg <b>8000</b> TDZE <b>867</b> Apt Elev <b>871</b>
--	------------------------	---

# RNAV (GPS) RWY 2

CENTRAL IL RGNL/BLOOMINGTON-NORMAL (BMI)

<b>RNP APCH.</b> ▼ For uncompensated Baro-VNAV systems, LNAV/VNAV NA below -16°C or above 54°C. Baro-VNAV and VDP NA when using General Downing-Peoria Intl altimeter setting. When local altimeter setting not received, use General Downing-Peoria Intl altimeter setting: increase all DA 116 feet and all MDA 120 feet; increase LPV and LNAV/VNAV all Cats visibility ½ SM, LNAV Cats C/D visibility ¾ SM, and Circling all Cats visibility ¼ SM. Inop table does not apply.	<b>MALSR</b> 	<b>MISSED APPROACH:</b> Climb to 3000 direct ZEMEN then on track 335° to KAPPA and hold.
--	------------------	---

<b>ATIS</b> <b>119.575</b>	<b>SAINT LOUIS APP CON</b> <b>128.725 256.9</b>	<b>BLOOMINGTON TOWER *</b> <b>124.6 (CTAF) 269.575</b>	<b>GND CON</b> <b>121.65</b>	<b>UNICOM</b> <b>122.95</b>
-------------------------------	--	---	---------------------------------	--------------------------------



<b>ELEV 871</b>	<b>TDZE 867</b>
<b>TDZ/CL Rwy 20</b>	<b>HIRL Rwy 2-20 and 11-29</b>

4 NM Holding Pattern <b>HUPAD</b>	<b>CIGIG</b> 2500 *1520	<b>YABUG</b> 1.9 NM to RW02 *0.9 NM to RW02	<b>ZEMEN</b> 3000	tr 335° *LNAV only	<b>KAPPA</b>



CATEGORY	A	B	C	D
LPV DA		1214-1¼	347 (400-1¼)	
LNAV/VNAV DA		1269-1¼	402 (400-1¼)	
LNAV MDA	1220-1	353 (400-1)	1220-1¼	353 (400-1¼)
<b>CIRCLING</b>	1340-1	469 (500-1)	1620-2¼ 749 (800-2¼)	1620-2½ 749 (800-2½)

EC-3, 05 SEP 2024 to 03 OCT 2024

EC-3, 05 SEP 2024 to 03 OCT 2024