

LOC/DME I-MMO <b>110.9</b> Chan <b>46</b>	APP CRS <b>167°</b>	Rwy ldg <b>8002</b> TDZE <b>2164</b> Apt Elev <b>2164</b>
---	------------------------	---

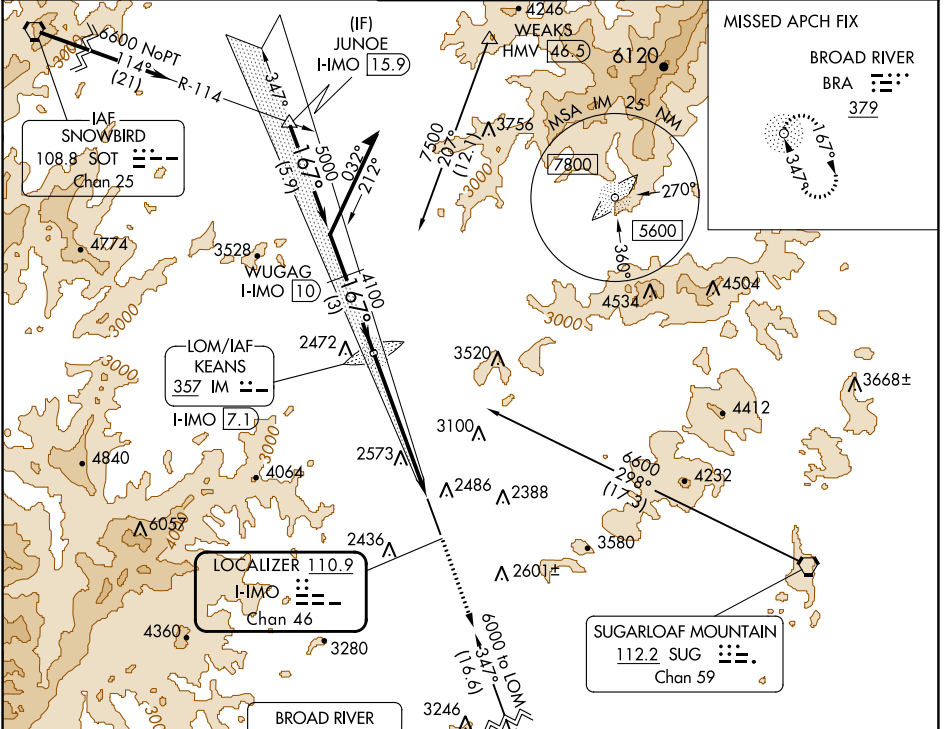
# ILS or LOC RWY 17

ASHEVILLE RGNL (AVL)

ADF and DME required.

**MAJLSR** MISSED APPROACH: Climb to 5400 direct BRA NDB and hold. Continue climb-in-hold to 5400.

ATIS <b>120.2</b>	ASHEVILLE APP CON* <b>124.65 351.8</b>	ASHEVILLE TOWER* <b>121.1(CTAF) 257.8</b>	GND CON <b>121.9</b>	UNICOM <b>122.95</b>
----------------------	---	--	-------------------------	-------------------------



Remain within 10 NM  5600 GS 3.00° TCH 55 5000 4100 3 NM    3.9 NM    1.6 NM	KEANS LOM I-MMO 7.1 4012 5400 BRA *LOC only.		ELEV 2164 TDZE 2164 167° 0.4% 8002 0.3% TWR 2223 35	
	WUGAG I-MMO 10 4100		*I-MMO 3 I-MMO 1.5	
CATEGORY	A	B	C	D
S-ILS 17		2364-1/2	200 (200-1/2)	
S-LOC 17	2720-1/2	556 (600-1/2)	2720-1 1/8	556 (600-1 1/8)
CIRCLING	2800-1 636 (700-1)	2880-1 716 (800-1)	3540-3 1376 (1400-3)	3720-3 1556 (1600-3)
TDZ/CL Rwy 35 HIRL Rwy 17-35 REIL Rwy 17 and 35 FAF to MAP 5.5 NM Knots: 60 90 120 150 180 Min:Sec: 5:30 3:40 2:45 2:12 1:50				

SE-2, 05 SEP 2024 to 03 OCT 2024

SE-2, 05 SEP 2024 to 03 OCT 2024