

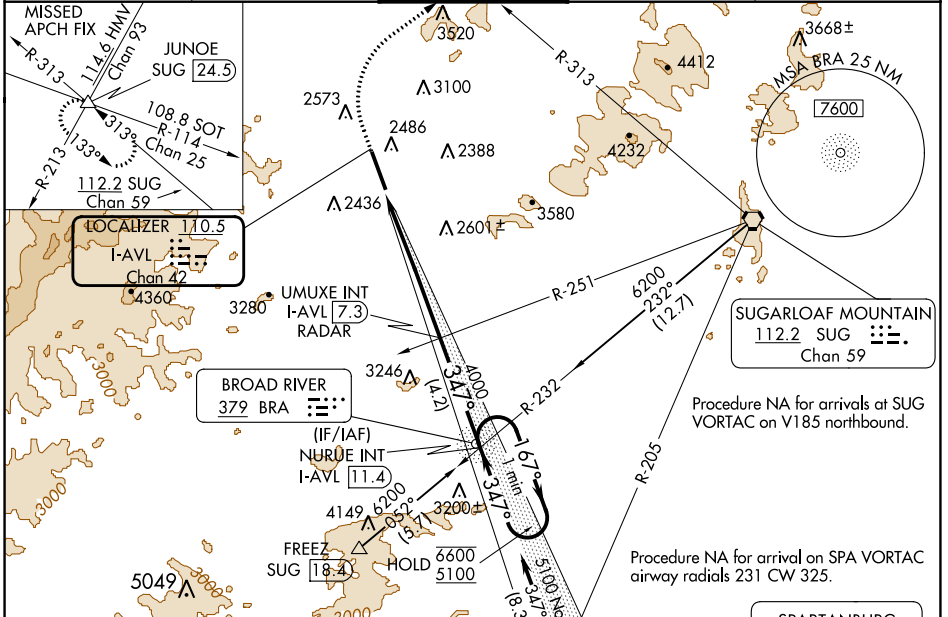
LOC/DME I-AVL 110.5 Chan 42	APP CRS 347°	Rwy Idg TDZE 8002 2141 Apt Elev 2164
--	------------------------	---

ILS or LOC RWY 35

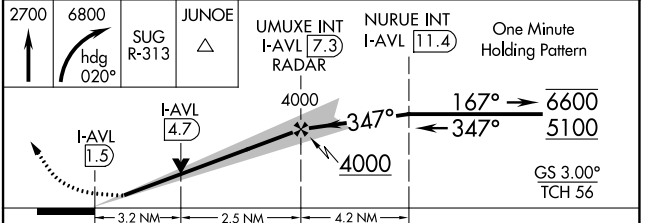
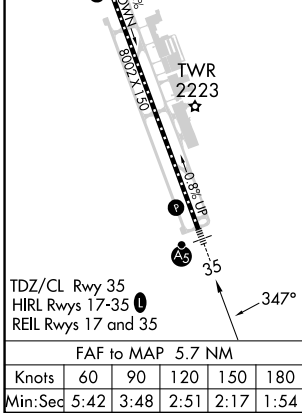
ASHEVILLE RGNL (AVL)

<p>Circling NA west of Rwy 17-35.</p>	<p>MALS R</p>	<p>MISSED APPROACH: Climb to 2700 then climbing right turn to 6800 on heading 020° and on SUG VORTAC R-313 to JUNOE INT/SUG 24.5 DME and hold, continue climb-in-hold to 6800. * Missed approach requires minimum climb of 340 feet per NM to 4200.</p>
		<p>ATIS 120.2</p>

ASHEVILLE APP CON* 124.65 351.8	ASHEVILLE TOWER* 121.1 (CTAF) 0 257.8	GND CON 121.9	UNICOM 122.95
---	---	-------------------------	-------------------------



ELEV 2164	D	TDZE 2141
-----------	----------	-----------



CATEGORY	A	B	C	D
S-ILS 35*	2360/24		219 (200-1/2)	
S-ILS 35	3019-4		878 (900-4)	
S-LOC 35	3200/40 1059 (1100-3/4)	3200/55 1059 (1100-1)	3200-2 1/2	1059 (1100-2 1/2)
C CIRCLING	3200-1 1/4 1036 (1100-1 1/4)	3200-1 1/2 1036 (1100-1 1/2)	3460-3 1296 (1300-3)	3720-3 1556 (1600-3)

SE-2, 05 SEP 2024 to 03 OCT 2024

SE-2, 05 SEP 2024 to 03 OCT 2024